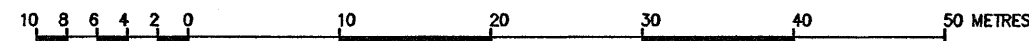


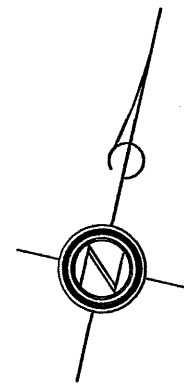
PLAN OF SURVEY OF
PART OF LOT 27, CONCESSION 8
TOWNSHIP OF NORTH DUMFRIES, REGIONAL MUNICIPALITY OF WATERLOO

(GEOGRAPHIC TOWNSHIP OF NORTH DUMFRIES)

SCALE 1:500



MacDONALD TAMBLYN LORD SURVEYING LTD.



Subject Property 1410 Wrigley

PLAN 58R-

RECEIVED AND DEPOSITED

REPRESENTATIVE FOR
LAND REGISTRAR FOR THE LAND TITLES
DIVISION OF WATERLOO (No. 58)

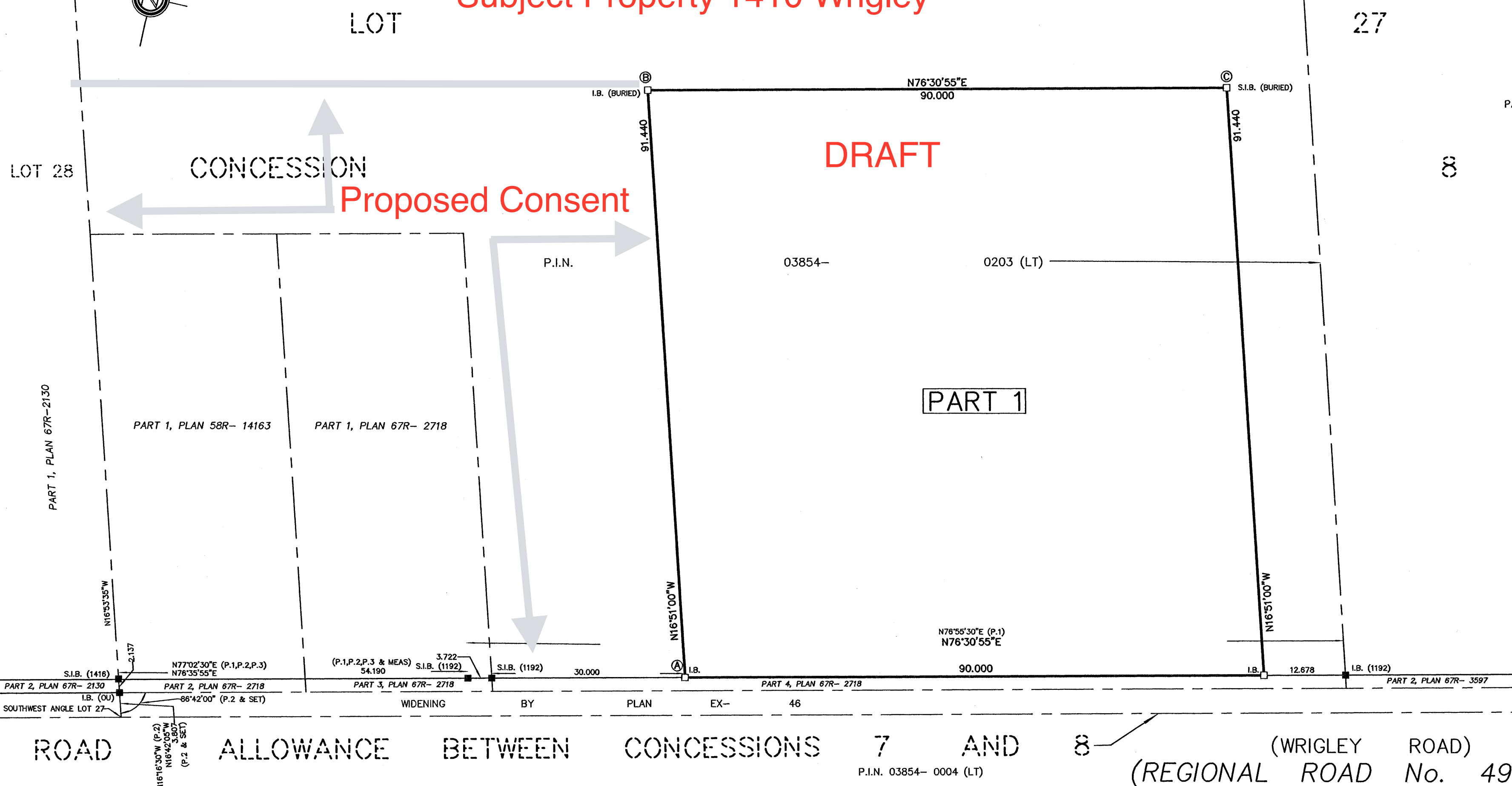
I REQUIRE THIS PLAN TO BE DEPOSITED
UNDER THE LAND TITLES ACT
OCTOBER 9, 2014

W.B. Tamblin
W.B. TAMBLYN, O.L.S.

PART SCHEDULE

PART	LOT	CONCESSION	P.I.N.
1	27	8	03854-0203(LT)

PART 1 COMPRISES PART OF P.I.N. 03854-0203(LT)



INTEGRATION DATA

ALL COORDINATES ARE IN METRES, DERIVED FROM GPS OBSERVATIONS, USING THE CAN-NET NETWORK AND ARE REFERRED TO UTM ZONE 17 (81° WEST LONGITUDE) NAD83 (CSRS). COORDINATE VALUES ARE TO URBAN ACCURACY IN ACCORDANCE WITH SECTION 14 (2) OF O. REG. 216/10

POINT ID	NORTHING	EASTING
A	4793549.240	548115.102
B	4793636.727	548088.604
C	4793657.707	548176.096

CAUTION: COORDINATES CANNOT, IN THEMSELVES, BE USED TO RE-ESTABLISH CORNERS OR BOUNDARIES SHOWN ON THIS PLAN.

LEGEND:

- DENOTES SURVEY MONUMENT FOUND
- DENOTES SURVEY MONUMENT SET
- S.I.B. DENOTES STANDARD IRON BAR
- I.B. DENOTES IRON BAR
- Wt. DENOTES WITNESS
- (1192) DENOTES JAMES S. CAMPBELL, O.L.S.
- (1416) DENOTES S. RUUSKA, O.L.S.
- (OU) DENOTES ORIGIN UNKNOWN
- P.1 DENOTES PLAN 67R-2718
- P.2 DENOTES PLAN 67R-2130
- P.3 DENOTES PLAN 58R-14463

METRIC

DISTANCES AND COORDINATES SHOWN ON THIS PLAN ARE IN METRES AND CAN BE CONVERTED TO FEET BY DIVIDING BY 0.3048.

DISTANCES ARE GROUND AND CAN BE CONVERTED TO GRID BY MULTIPLYING THE COMBINED SCALE FACTOR OF 0.99983.

BEARING REFERENCE

BEARINGS ARE UTM GRID, DERIVED FROM SIMULTANEOUS GPS OBSERVATIONS FROM MONUMENT A TO B, SHOWN HEREON, HAVING A BEARING OF N16°51'00\"/>

SURVEYOR'S CERTIFICATE

I CERTIFY THAT:

- THIS SURVEY AND PLAN ARE CORRECT AND IN ACCORDANCE WITH THE SURVEYS ACT, THE SURVEYORS ACT AND THE LAND TITLES ACT AND THE REGULATIONS MADE UNDER THEM.
- THE SURVEY WAS COMPLETED ON THE 9th DAY OF OCTOBER, 2014.

OCTOBER 9, 2014
DATE

W.B. Tamblin
W.B. TAMBLYN
ONTARIO LAND SURVEYOR

MacDONALD TAMBLYN LORD SURVEYING SURVEYING MAPPING GIS

A wholly owned subsidiary of J.D. Barnes Limited

50 FLEMING DRIVE, UNIT 2, CAMBRIDGE, ON N1T 2B1
T: (519) 621-9600 F: (519) 621-6480 www.jdbarnes.com

DRAWN BY: R.L.	CHECKED BY: <i>W.B. Tamblin</i>	REFERENCE NO.: 14-40-201-00
FILE: 14-40-201-00	DATED: 09/10/14	