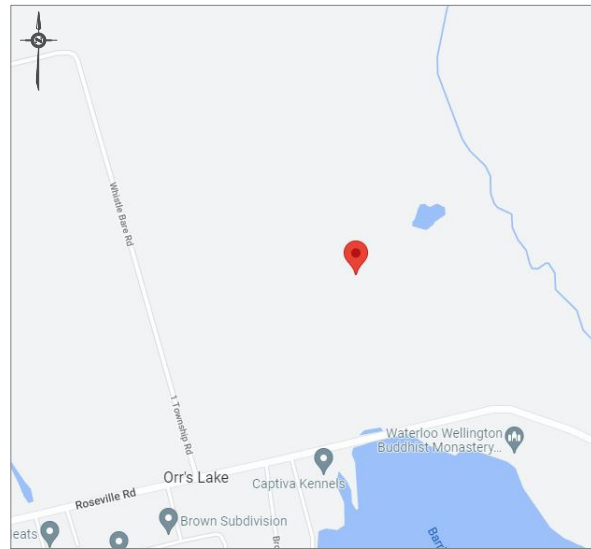
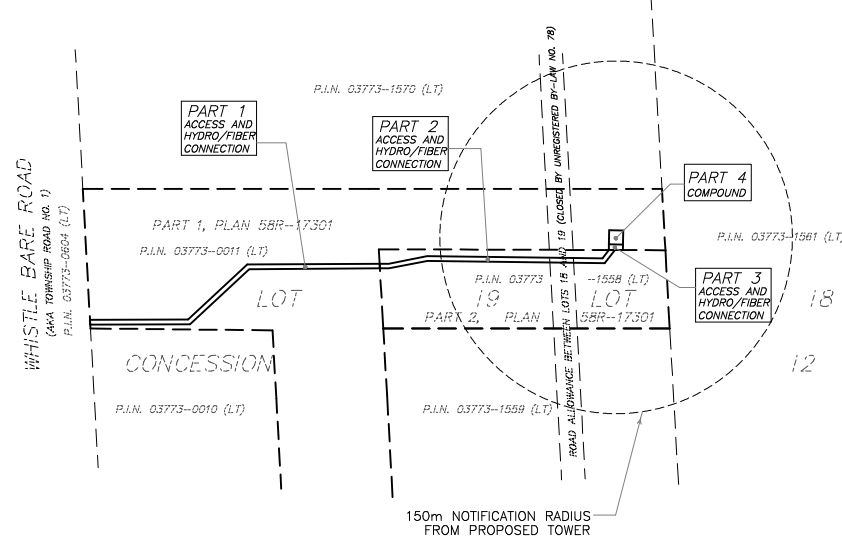


KEY PLAN (NOT TO SCALE)



NOTIFICATION RADIUS PLAN
SCALE 1:3000



SITE PLAN

PROPOSED TELECOMMUNICATION INSTALLATION
1056 WHISTLE BARE ROAD

PART OF LOTS 18 AND 19
CONCESSION 12 AND
PART OF ROAD ALLOWANCE
BETWEEN LOTS 18 AND 19
TOWNSHIP OF NORTH DUMFRIES
REGIONAL MUNICIPALITY OF WATERLOO

SCALE 1 : 1000



ALEX MARTON LTD.
ONTARIO LAND SURVEYORS

METRIC

DISTANCES AND COORDINATES SHOWN ON THIS PLAN ARE IN METRES AND CAN BE CONVERTED TO FEET BY DIVIDING BY 0.3048.

SCHEDULE

PART	LOT	CONCESSION	P.I.N.	AREA sq.m
1	PART OF 19	12	03773-0011 (LT)	1061
2	PART OF 18 AND 19		03773-1558 (LT)	809
3	PART OF 18		03773-0011 (LT)	58
4				144

INTEGRATION NOTE

BEARINGS SHOWN ARE GRID BEARINGS AND ARE DERIVED FROM OBSERVED REFERENCE POINTS (ORP'S) 1 AND 2 BY REAL TIME NETWORK OBSERVATIONS, UTM ZONE 17, NAD 83 (CSRS) (2010).

DISTANCES SHOWN ON THIS PLAN ARE GROUND DISTANCES AND CAN BE CONVERTED TO GRID DISTANCES BY MULTIPLYING BY THE COMBINED SCALE FACTOR OF 0.99959035.

INTEGRATION DATA

OBSERVED REFERENCE POINTS (ORP'S) DERIVED FROM GPS REAL TIME NETWORK OBSERVATIONS AND ARE REFERRED TO UTM ZONE 17, NAD 83 (CSRS) (2010). COORDINATE VALUES ARE TO URBAN ACCURACY PER SECTION 14 (2) OF O. REG 216/10

POINT ID	NORTHING	EASTING
ORP 1	4801524.93	551954.42
ORP 2	4801388.61	551902.85

COORDINATES CANNOT, IN THEMSELVES, BE USED TO RE-ESTABLISH CORNERS OR BOUNDARIES SHOWN ON THIS PLAN.

ELEVATION NOTE

ELEVATIONS SHOWN HEREON ARE GEODETIC AND ARE DERIVED FROM GPS OBSERVATIONS USING REAL TIME NETWORK OBSERVATIONS.

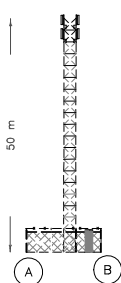
SURVEYOR'S CERTIFICATE

I CERTIFY THAT:
1. THE SURVEY WAS COMPLETED ON THE 21ST DAY OF SEPTEMBER, 2022.

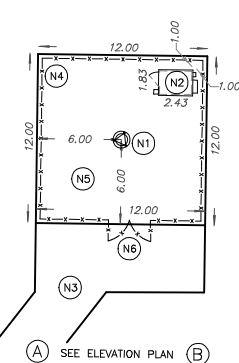
OCTOBER 12, 2022
DATE

A. Marton
A. MARTON
ONTARIO LAND SURVEYOR

ELEVATION PLAN
NOT TO SCALE



PROPOSED COMPOUND LAYOUT PLAN
SCALE 1:250



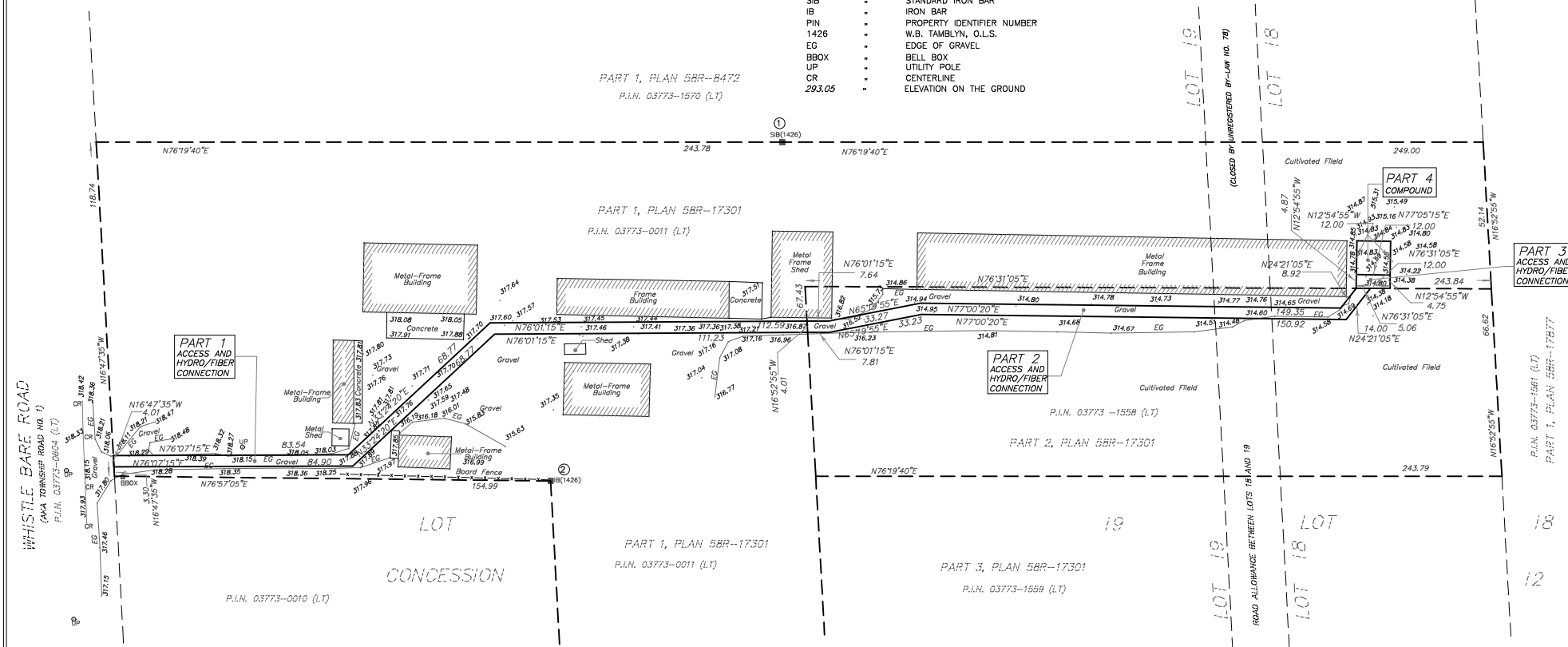
NOTES

- (N1) PROPOSED LATTICE TRI-POLE PAINT COLOUR SUBJECT TO NAV CANADA REQUIREMENTS. ANTENNA NUMBER AND LOCATIONS TO BE DETERMINED. FOUNDATION DESIGN PENDING SOIL REPORT.
- (N2) PROPOSED RADIO EQUIPMENT SHELTER ON REINFORCED CONCRETE SLAB.
- (N3) PROPOSED ACCESS WAY AND HYDRO/FIBER OPTIC CONNECTION.
- (N4) PROPOSED 2.4 m HIGH CHAIN LINK SECURITY FENCE TOPPED WITH BARBED WIRE SURROUNDING THE COMPOUND.
- (N5) REMOVE EXISTING TOPSOIL, PROOF ROLL SUBGRADE AND PLACE 300 mm GRANULAR A ACROSS COMPOUND AREA. MATCH INTO EXISTING GRADES ADJACENT TO THE COMPOUND. PROVIDE POSITIVE DRAINAGE AWAY FROM THE TOWER, SHELTER AND HYDRO PAD TOWARDS THE NATURAL SLOPE OF THE SITE. REINSTATE ALL DISTURBED AREAS.
- (N6) PROPOSED CHAIN LINK GATE.

SITE DATA	EXISTING	PROPOSED
PROPERTY AREA (P.I.N. 03773-0011 (LT))	±6.8 ha	
PROPERTY AREA (P.I.N. 03773-1558 (LT))	±1.6 ha	
AREA LEASED		
ACCESS AND HYDRO/FIBER CONNECTION (PART 1)		1061 sq.m.
ACCESS AND HYDRO/FIBER CONNECTION (PART 2)		809 sq.m.
ACCESS AND HYDRO/FIBER CONNECTION (PART 3)		58 sq.m.
COMPOUND (PART 4)		144 sq.m.
TOTAL		2072 sq.m.
UNITS		1 PROPOSED RADIO EQUIPMENT SHELTER 1 PROPOSED LATTICE TRI-POLE TOWER
HEIGHT OF TOWER		50 m
SETBACKS		
PROPOSED LATTICE TRI-POLE TOWER		
FRONT (WHISTLE BARE ROAD)		±451 m
REAR (EAST)		±41 m
SIDE (NORTH)		±41 m
PROPOSED RADIO EQUIPMENT SHELTER		
FRONT (WHISTLE BARE ROAD)		±454 m
REAR (EAST)		±36 m
SIDE (NORTH)		±36 m

LEGEND

- DENOTES SURVEY MONUMENT FOUND
- SIB - STANDARD IRON BAR
- IB - IRON BAR
- PIN - PROPERTY IDENTIFIER NUMBER
- 1426 - W.B. TAMBLYN, O.L.S.
- EG - EDGE OF GRAVEL
- BBOX - BELL BOX
- UP - UTILITY POLE
- CR - CENTERLINE
- 293.05 - ELEVATION ON THE GROUND



AMENDMENTS		
No.	DESCRIPTION	DATE

SIGNUM

LATITUDE N43°21'53.5"
LONGITUDE W80°21'22.1"
ELEVATION 314.7

SITE: ON1493

ALEX MARTON LIMITED
ONTARIO LAND SURVEYORS
160 APPLEWOOD CRESCENT, UNIT 8,
CONCORD, ONTARIO, L4K 4H2
PHONE: 905-879-9889 FAX: 905-879-0770
E-MAIL: alex@amsurveying.ca
WEBSITE: www.amsurveying.ca

PARTY CHIEF : J.H.G. FILE NAME: 2022-006(ON1493).DWG
DRAWN : J.H. PLOT SCALE: 1:1000
CHECKED : A.M. PROJECT No. 2022-006