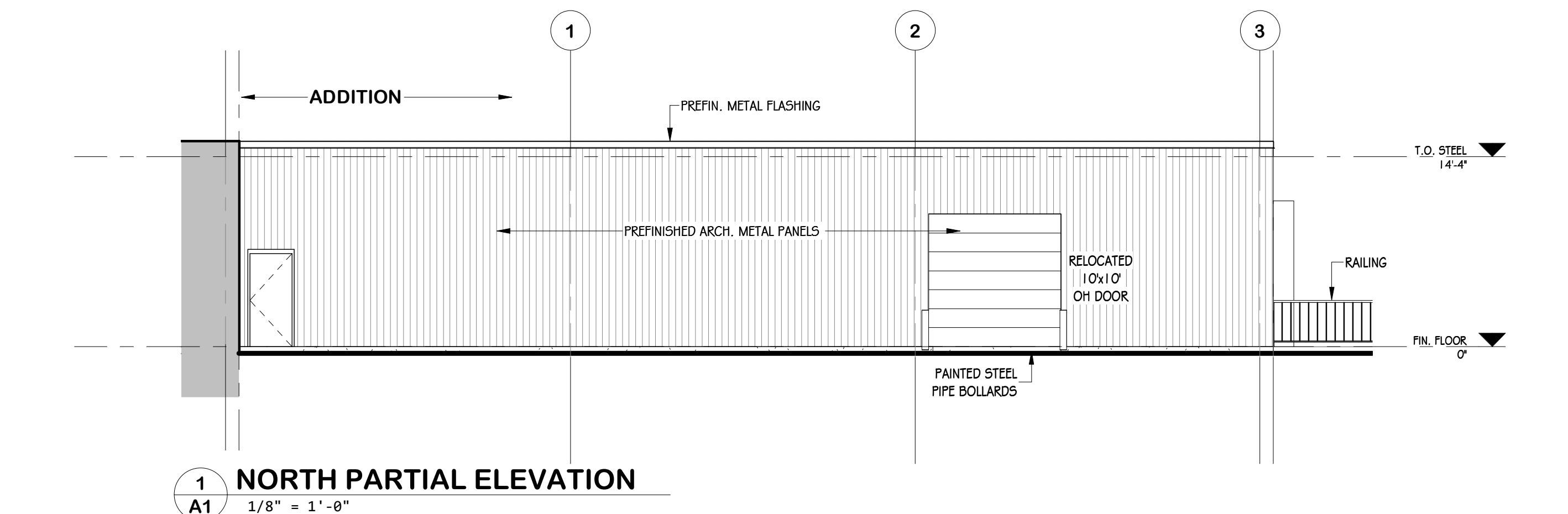


**EXTERIOR WALL CONSTRUCTION**  
 2Gga. PREFINISHED ARCH. METAL PANELS  
 CONT. R10 METAL BUILDING INSULATION  
 1" STEEL GIRTS  
 W/ R28 METAL BUILDING INSULATION (CAVITY FILL)  
 29ga. PREFINISHED METAL LINER PANELS  
 - FULL HEIGHT

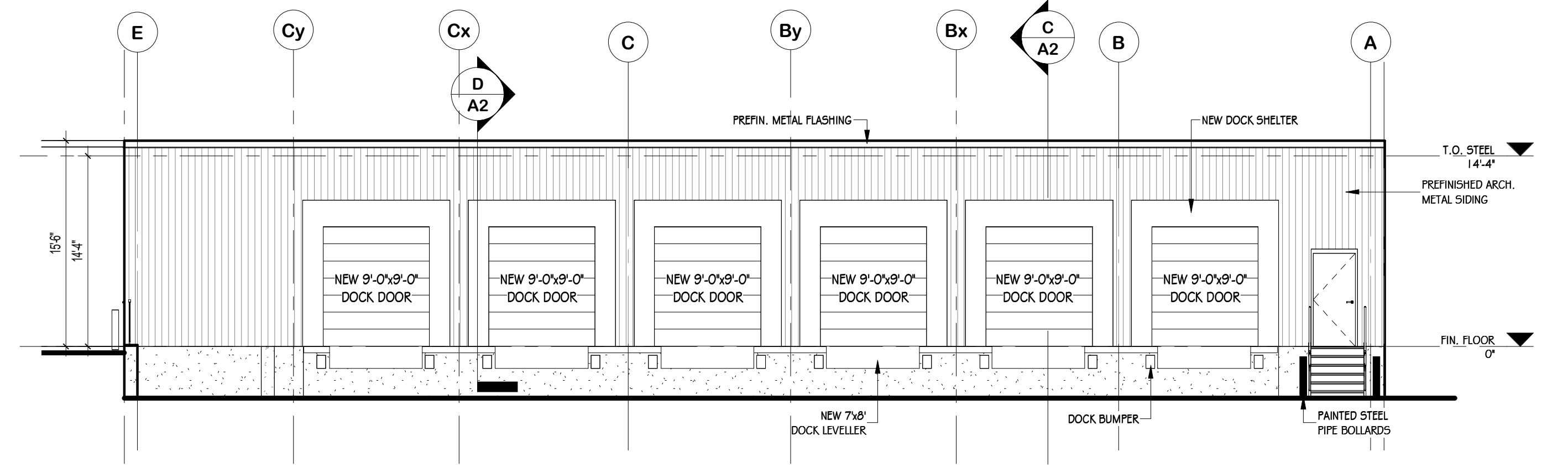
**ROOF CONSTRUCTION**  
 ROOF MEMBRANE  
 R35 RIGID INSULATION  
 1 1/2" STEEL DECK  
 STEEL JOISTS

**FLOOR CONSTRUCTION**  
 6" CONCRETE FLOOR SLAB  
 W/ 6x6x6 W.W. MESH on  
 6" GRANULAR "A" BASE

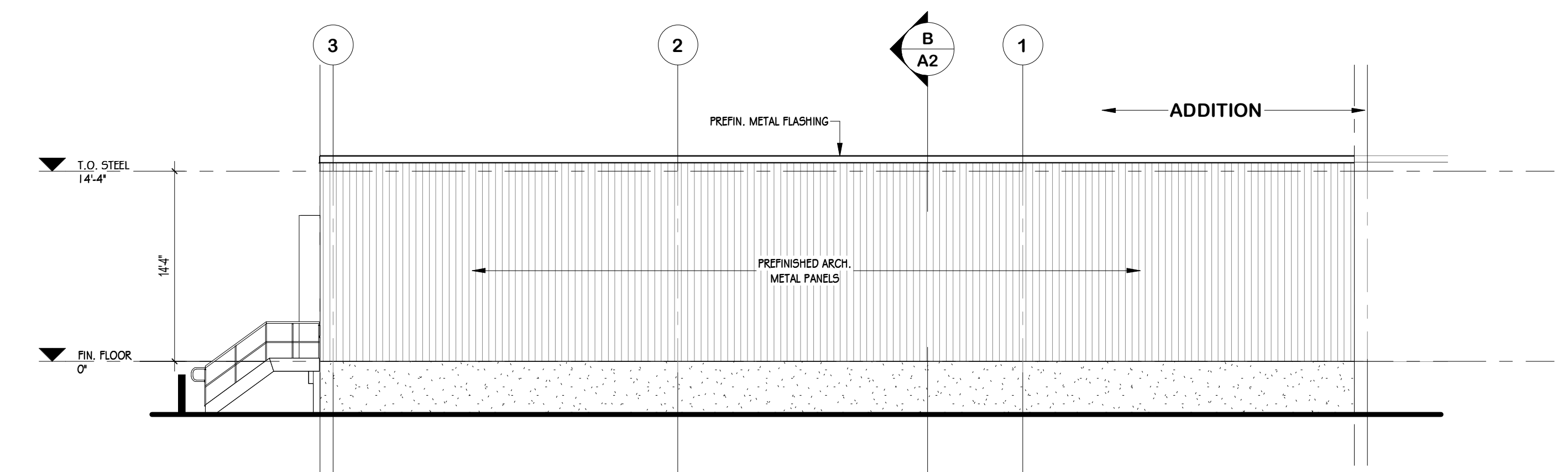
**FLOOR PLAN**  
 1/8" = 1'-0"



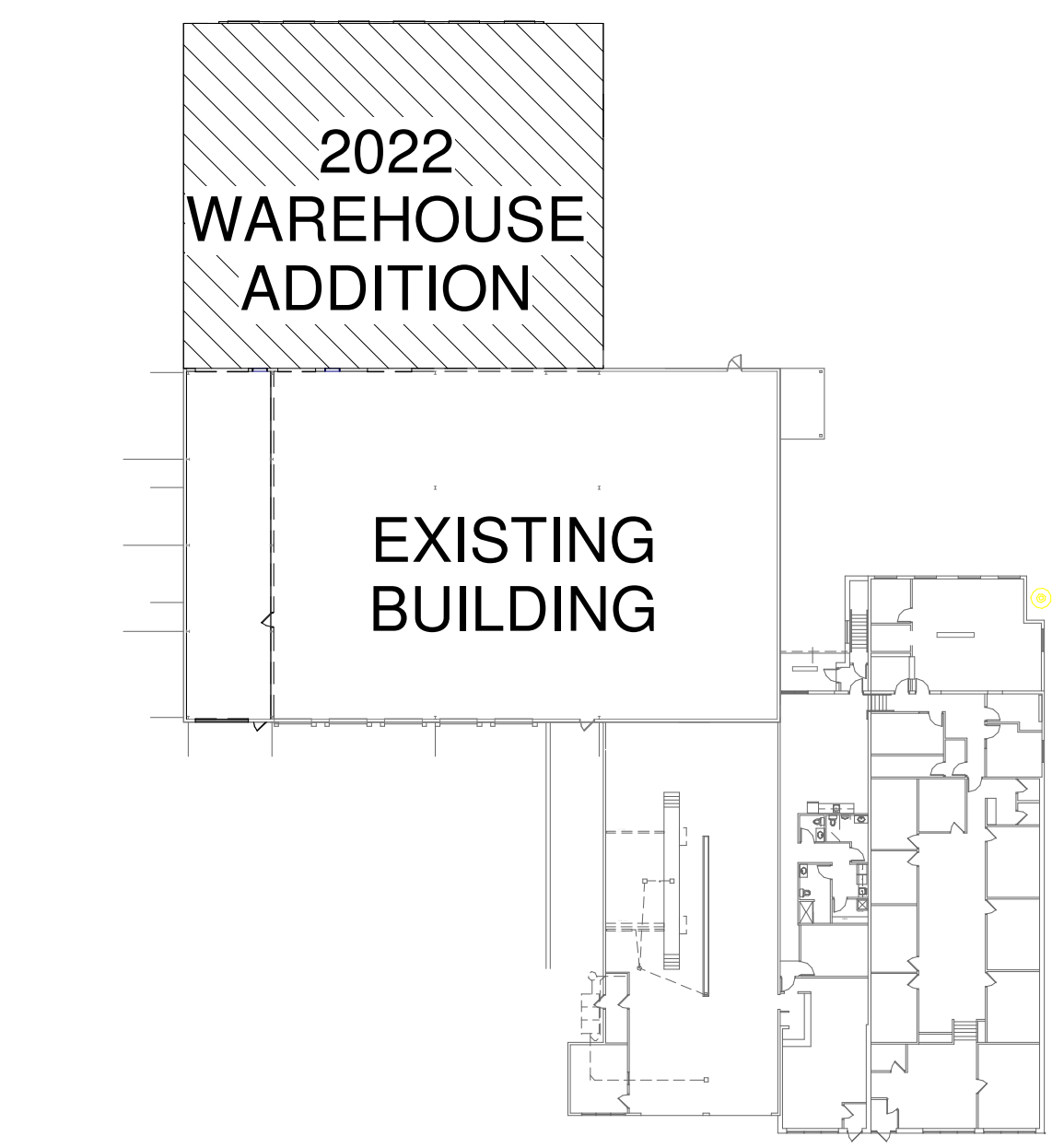
**1 NORTH PARTIAL ELEVATION**  
 1/8" = 1'-0"



**2 WEST PARTIAL ELEVATION**  
 1/8" = 1'-0"



**3 SOUTH PARTIAL ELEVATION**  
 1/8" = 1'-0"



**BUILDING KEY PLAN.**  
 1" = 40'-0"

NO.	DATE	REVISION	
<b>SCHIEDEL</b>			
CONSTRUCTION INCORPORATED GENERAL CONTRACTORS - PROJECT MANAGERS			
405 QUEEN ST W. CAMBRISE, ONT. M5C 1R8 (905) 888-9838 email address: reception@schiedelconst.com			
PROJECT			
<b>2022 WAREHOUSE ADDITION</b>			
<b>J&amp;R HALL</b>			
<b>TRANSPORT INC.</b>			
552 Piper St. Ayr Township of North Dumfries			
SCALE	DATE	DRAWN BY	PROJECT NO.
As indicated	June / 2022	PG	210049
DRAWING		DRAWING NO.	
<b>FLOOR PLAN &amp; ELEVATIONS</b>		<b>A1</b>	