

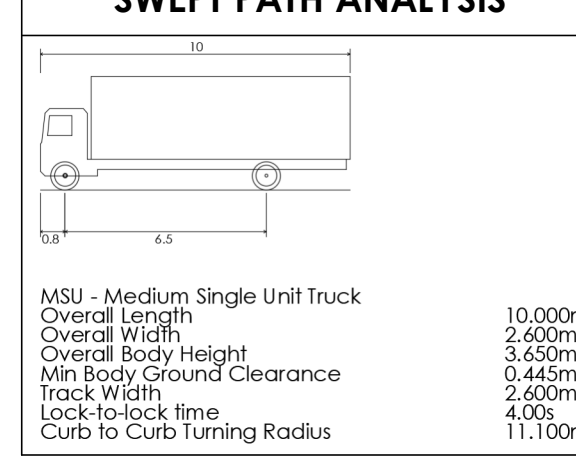
GENERAL NOTES:

1. ALL FINAL DIMENSIONS ARE TO BE PREPARED BY THE PROJECTS SURVEYOR. ALL DIMENSIONS ARE SUBJECT TO APPROVAL OF THE MUNICIPAL AUTHORITY.
2. LIGHTING TO BE DIRECTED ONTO SITE AND NOT TO INFRINGE ON ADJACENT PROPERTIES.
3. REGULAR PARKING SPACES ARE 2.75m x 5.5m MIN.
4. MICRO PARKING SPACES ARE 2.4m x 5.5m MIN.
5. BARRIER FREE PARKING SPACES ARE 3.4m x 5.5m AND SHALL MEET ALL TOWNSHIP OF NORTH DUMFRIES REQUIREMENTS INCLUDING A MINIMUM 1.5m WIDE ACCESS AISLE.

ENERGY+ NOTES:

1. ALL STRUCTURES AND FIXTURES TO MEET ELECTRICAL SAFETY AUTHORITY AND ENERGY+ MINIMUM STANDARDS AND CLEARANCES.
2. CONTACT ENERGY+ MINIMUM 6 MONTHS PRIOR TO ANY RELOCATIONS, SERVICE UPGRADE OR NEW IN SERVICE DATE. FOR DESIGN AND ESTIMATE, WITH ALL OF THE INFORMATION ENERGY+ REQUIRES TO PREPARE AS PER OUR CONDITIONS OF SERVICE WWW.ENERGYPLUS.CA.
3. ENSURE MINIMUM 25 FEET OF SECONDARY CABLES ARE LEFT INSIDE THE 3ø PADMOUNT TRANSFORMER ENCLOSURE FOR CONNECTION TO ENERGY+ PADMOUNT TRANSFORMER.
4. CONTACT ENERGY+ SERVICE TECHNOLOGIST 514-21-3838 WITH SIZE AND NUMBER OF SECONDARY CABLES TO ENSURE TRANSFORMER LUGS ARE IN STOCK AT TIME OF NEW SERVICE CONNECTION REQUEST BY CUSTOMER.
5. SITE MUST BE ABLE TO SUPPORT ENERGY+ EQUIPMENT FOR PLACING/MAINTAINING PADMOUNT TRANSFORMER AND OTHER INFRASTRUCTURE.
6. ENERGY+ INFRASTRUCTURE SHALL NOT BE PLACED OVER UNDERGROUND PARKING AREAS/STRUCTURES.
7. WINDOWS SHALL BE INOPERABLE AND NOT PROTRUDE INTO THE REQUIRED CLEARANCE AND METALLIC PARTS OF THE BUILDING SHALL BE EFFECTIVELY GROUNDED.
8. ALL SINGS AND FENCE POSTS MUST BE MINIMUM 1.0m FROM EDGE OF ENERGY+ UNDERGROUND DUCT BANKS.

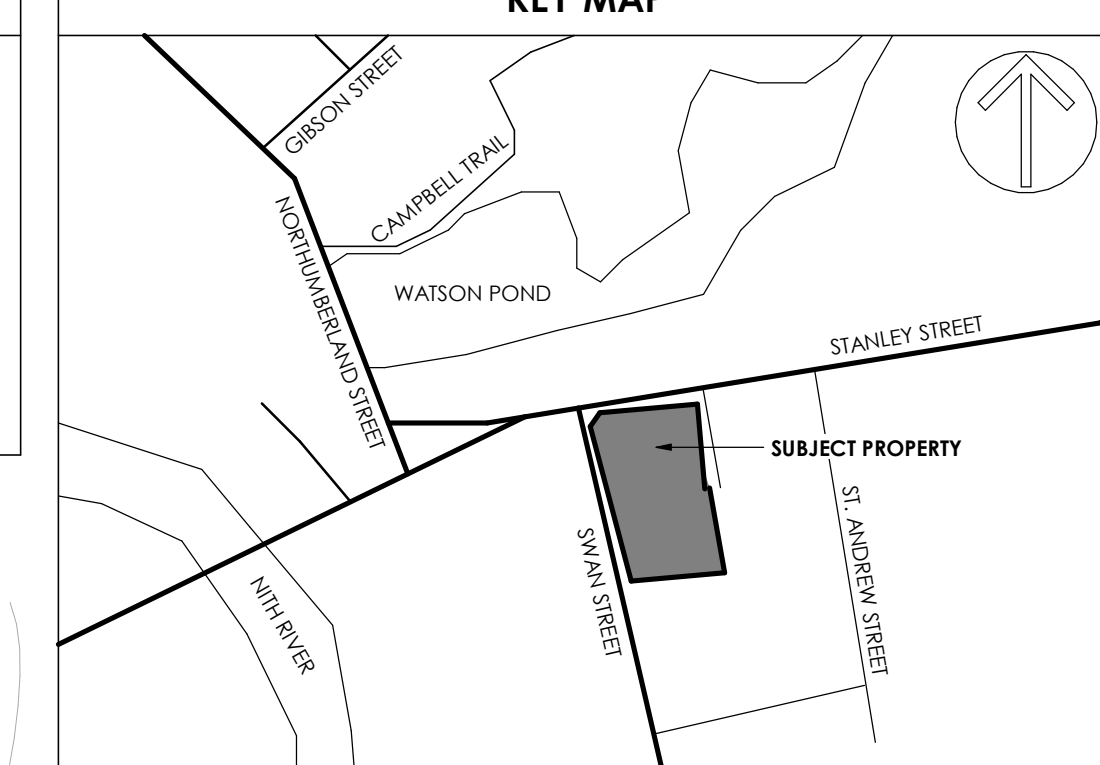
SWEPT PATH ANALYSIS



SITE LEGEND

- ENTRANCE/EXIT
- PARKING COUNT
- BARRIER FREE PARKING
- HYDRO POLE
- FIRE HYDRANT
- TRANSFORMER

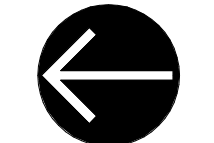
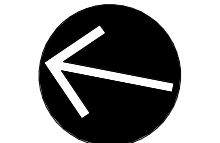
KEY MAP



ALL DRAWINGS AND RELATED DOCUMENTS ARE THE COPYRIGHT PROPERTY OF THE CONSULTANT, AND MUST BE RETURNED UPON REQUEST.

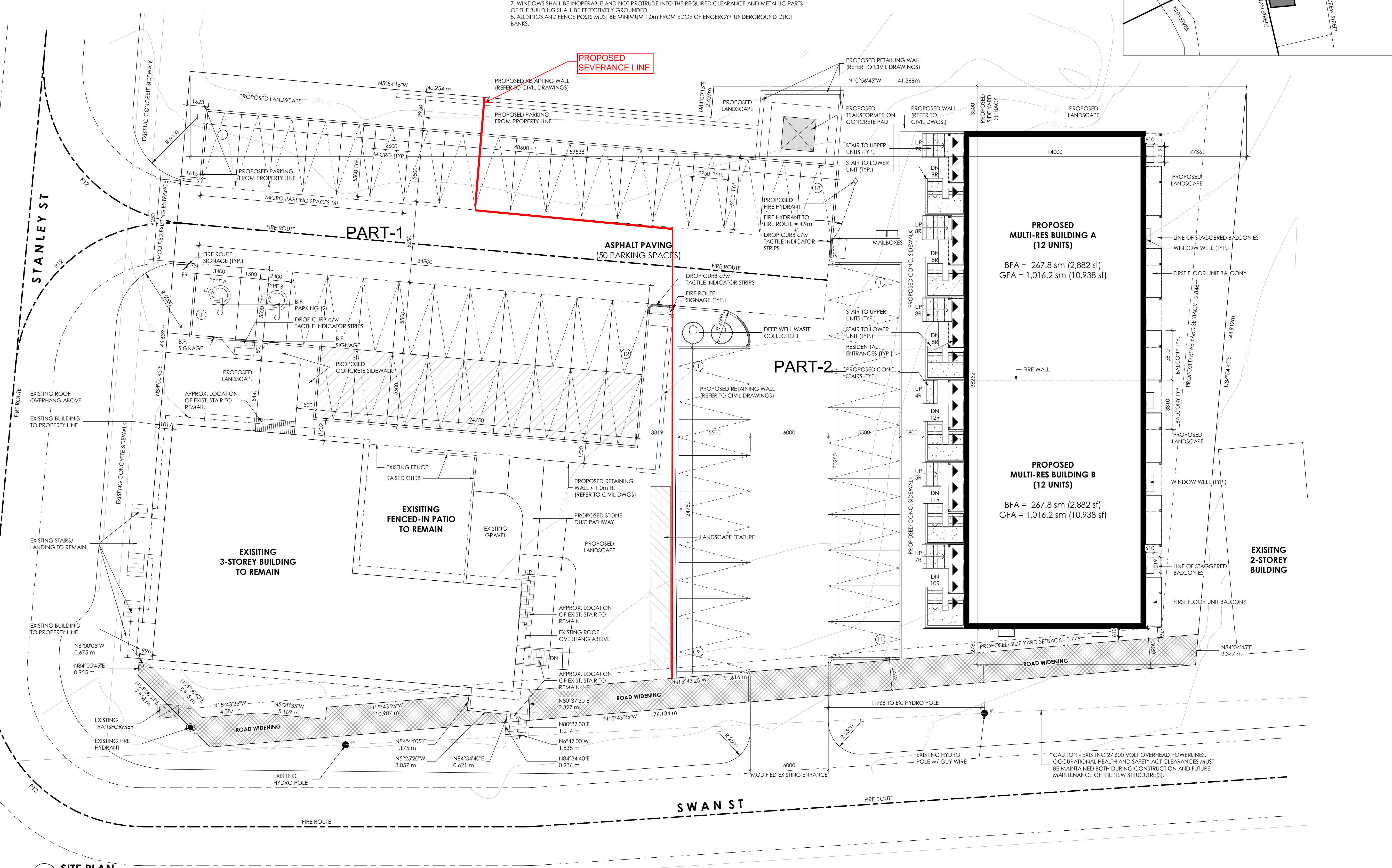
REPRODUCTIONS OF THE DRAWINGS AND RELATED DOCUMENTS IN PART OR IN WHOLE IS FORBIDDEN WITHOUT THE CONSULTANTS WRITTEN REQUEST.

THIS DRAWING SHALL BE READ IN CONJUNCTION WITH ALL OTHER RELATED DOCUMENTS AND SPECIFICATIONS. THIS DRAWING SHALL NOT BE SCALED.



- ISSUED FOR:
- SCHEMATIC DESIGN
 - DEVELOPED DESIGN
 - SITE PLAN APPROVAL 2021.01.25
 - BIDDING/TENDER

NO.	REVISION DESCRIPTION	DATE
1	ISSUED FOR REVIEW	2021.12.13



1 SITE PLAN
SP.01

1:150

PROPOSED SITE SETBACKS

REAR YARD (SOUTH)	2848 mm
SIDE YARD (EAST)	3500 mm
SIDEYARD (WEST)	* 776 mm

(*) POST-WIDENING

BUILDING HEIGHT (FROM AVERAGE GRADE)

	BUILDING 1	BUILDING 2
BASEMENT	-1147 mm	-947 mm
1ST FLOOR	1850 mm	2050 mm
2ND FLOOR	5050 mm	5250 mm
3RD FLOOR	8251 mm	8451 mm
T/O TOP PLATE	10715 mm	10915 mm
TOP OF ROOF	11477 mm	11677 mm
TOTAL HEIGHT	11477 mm	11677 mm



PROJECT NAME
99 STANLEY ST STACKED TOWNS
99 STANLEY ST. ATR, ON

CLIENT

DRAWING TITLE
SITE PLAN

PROJECT NUMBER	DRAWING NUMBER
19051	SP.01
SCALE	As indicated
SHEET SIZE	24x36