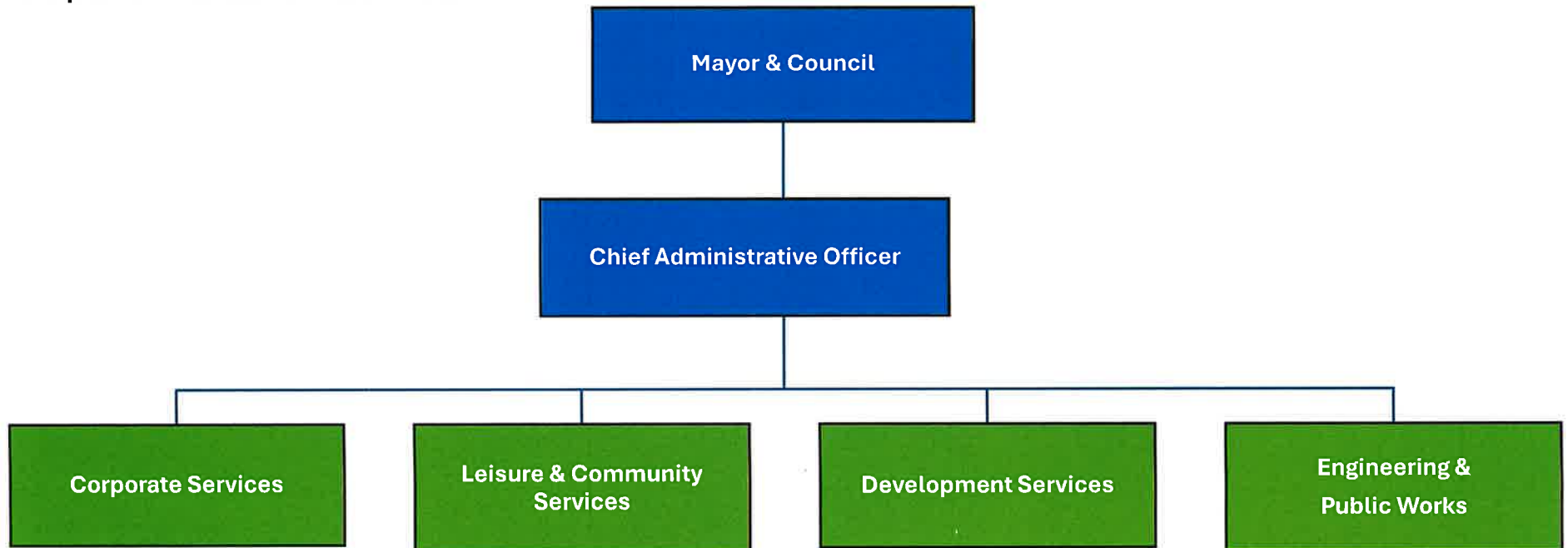




The TOWNSHIP of  
NORTH DUMFRIES

### Corporate Governance Chart - 2026





## Corporate Organizational Chart - Functional Overview - 2026

Corporate Services	Leisure & Community Services	Engineering & Public Works	Development Services	Office of the Chief Administrative Officer
<p><b>Finance &amp; Treasury</b>            Financial Planning            Budget Coordination &amp; Reporting            Asset Management Co-ordination            Tax Billing &amp; Collection            Tax Certificates &amp; Sales            Accounting - Payables &amp; Receivables            Payroll &amp; Benefits Administration            Investments            Financial Information Returns            Year End Audit            Performance Measures            Banking            Risk &amp; Insurance Management            Procurement Co-ordination</p> <p><b>Clerk's Division</b>            Council Secretariat            Municipal Elections            Advisory Committee Co-ordination            Commissioner of Oaths            Licensing            MFIPPA Administration            Integrity Commissioner Coordination            Ombudsman Commissioner Coordination            Accessibility Co-ordination            Vital Statistics Registry            Corporate Records Management            Legislative Research            Website Coordination            Animal Control Administration</p> <p><b>Information Technology</b>            Hardware &amp; Software Maintenance            Network Analysis &amp; Coordination            Network Architecture            Cyber Security &amp; Monitoring            Technical Support &amp; Self Help Desk</p> <p><b>Customer Service Division</b>            Administration Support to Departments            First Intake for External Contact</p>	<p><b>Parks &amp; Facilities Division</b>            Parks &amp; Sports Field Maintenance            Trails &amp; Open Space Maintenance            Corporate Woodlot - Natural Areas Management            Arenas / Community Centres Operations            Corporate Facilities Maintenance            Parks / Trails Design &amp; Capital Delivery            Minor Scale Facility Capital Delivery</p> <p><b>Community Programming Division</b>            Festival &amp; Events Co-ordination            Leisure Programming Liaison &amp; Facilitation            Leisure Programming Development &amp; Delivery            Sports Organization Liaison &amp; Administration            Facilities Rentals &amp; Reservations            Volunteer &amp; Community Group Engagement            Corporate Representation on Region Wide                Indigenous Relations Engagement            Corporate Representation on Region Wide                Diversity, Inclusion &amp; Equity Programs            Corporate Social Media Delivery</p>	<p><b>Public Works Division</b>            Four Seasons Roads Maintenance            Bridge &amp; Culvert Maintenance            Sidewalk Maintenance            Sidewalk Winter Maintenance            Four Seasons Municipal Parking Lot Maintenance            Streetlight Maintenance            Stormwater Network Maintenance            Road Pavement Markings            Road Safety Devices &amp; Signage            Road Permits &amp; Closures            Traffic Operations            Boulevard Tree Management            Roadside Management            Corporate Fleet &amp; Equipment Management</p> <p><b>Development &amp; Capital Engineering Division</b>            Infrastructure Master Planning            Environmental Assessment - Linear Network            Infrastructure Design &amp; Capital Delivery            Subdivision / Site Plan Engineering                Review &amp; Inspections            Administration of Subdivision / Condominium /                Site Plan Agreements            Site Alteration / Clean Fill By-law            Coordination &amp; Delivery of New Build Facility                or Major Addition / Renovation</p>	<p><b>Planning Division</b>            Planning Act Applications &amp;                Development Review            Approval Authority Plans of Subdivision &amp;                Condominium / General Zoning Bylaw                &amp; Amendments / Site Plans            Committee of Adjustment - Consents                &amp; Minor Variances            Growth Management Policies                &amp; Forecasts            Official Plan Administration / Land Use                Planning Policies &amp; Strategies            Statistics, Demographic Models &amp;                Administration of Databases            OLT Expert Testimony            GIS Mapping &amp; Administration            Heritage Planning            Source Water Protection Liaison</p> <p><b>Building Division</b>            Administration of Ontario Building Code            Zoning Administration            Building Plans Review            Building Inspections            Plumbing Review &amp; Inspections            Septic System Review &amp; Inspections            Permanent Sign Permits            Transient / Mobile Signage            Pool Permits &amp; Inspections            Property Standards Administration            Civic Addressing</p> <p><b>Economic Development &amp; Tourism</b></p> <p><b>Bylaw Enforcement Division</b>            Parking Enforcement            Bylaw Administration &amp; Enforcement            Property Standards Administration</p>	<p>Governance &amp; Leadership of Administration            Corporate General Management            Council Liaison            Inter-Municipal &amp; Government Liaison            Community Liaison &amp; Representation            Risk Management            Internal Audits            Long Range &amp; Strategic Planning            Financial Strategy &amp; Oversight            Strategic Initiatives &amp; Projects</p> <p><b>Divisions</b>            Human Resources            Legal Services            Corporate Communications            Corporate Real Estate Portfolio</p> <p><b>Fire Department / Emergency Management</b>            Fire Prevention &amp; Public Education            Emergency Response            Training            Fire Administration            Emergency Management Division</p>