

A number line representing distance in metres, ranging from 0 to 50. The line is marked at intervals of 10: 10, 5, 0, 10, 20, 30, 40, 50 metres. The segment from 0 to 10 is divided into 5 equal parts. The first part (0 to 2) is shaded black, and the remaining four parts (2 to 10) are indicated by dashed lines. The segment from 10 to 50 is divided into 4 equal parts, all of which are shaded black.

DISTANCES AND COORDINATES SHOWN ON THIS PLAN ARE IN METRES AND CAN BE CONVERTED TO FEET BY DIVIDING BY 0.3048.

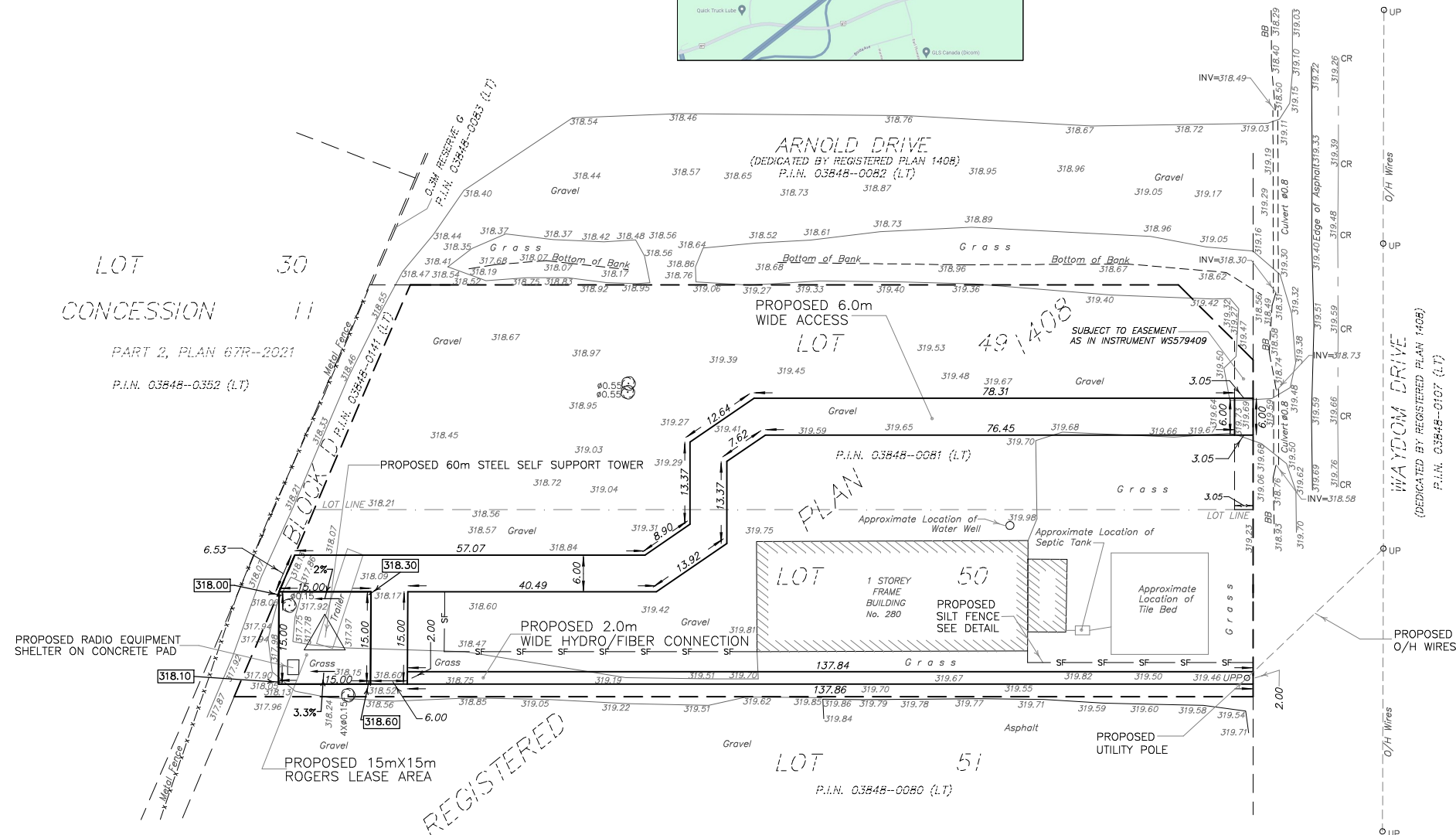
BASED ON ALEX MARTON LTD, O.L.S. SITE PLAN, DATED JULY 2, 2024
ALL RUNOFF FROM THE PROPOSED TELECOMMUNICATIONS SITE WILL BE
IN THE FORM OF SHEET FLOW. ALL RUNOFF WILL DRAIN TO EXISTING
ROADSIDE DITCHES SURROUNDING PARENT PARCEL AND WILL NOT
ADVERSELY AFFECT SURROUNDING PARCELS.

ELEVATIONS SHOWN HEREON ARE GEODETIC
AND ARE DERIVED FROM GPS OBSERVATIONS
USING REAL TIME NETWORK OBSERVATIONS.

PIN	DENOTES	PROPERTY IDENTIFIER NUMBER
INV	"	INVERT
UP	"	UTILITY POLE
CR	"	CENTERLINE
BB	"	BOTTOM OF BANK
O/H	"	OVERHEAD
U/G	"	UNDERGROUND
☺	"	DECIDUOUS TREE
999.99	"	EXISTING ELEVATION
999.99	"	PROPOSED ELEVATION
→	"	DRAINAGE DIRECTION

A map showing the location of the bus stop (marked with a red pin) relative to the Filing J Travel Center (marked with a blue pin). The map includes major roads like Highway 101 and Highway 102, and various landmarks such as the Filing J Travel Center, Golden Harvest Drive Inn, and several truck stops (Equipment Express, Quick Truck Lube). A compass rose indicates North is towards the top left.

NOT TO SCALE



160 APPLEWOOD CRESCENT, UNIT 8,
CONCORD, ONTARIO, L4K 4H2
PHONE: 905-879-9889 FAX: 905-879-0770
E-MAIL: info@amsurveying.ca
WEBSITE: www.amsurveying.ca

THIS DRAWING IS THE PROPERTY OF
ROGERS CANADA.
IT IS FOR THE EXCLUSIVE USE FOR THIS
PROJECT. ANY RE-USE OF THIS DRAWING
WITHOUT THE EXPRESSED WRITTEN CONSENT
ROGERS CANADA IS PROHIBITED.
IT IS A VIOLATION OF THE
LAW OF ANY PERSON, UNLESS THEY ARE
ACTING UNDER THE DIRECTION OF
ALEX MARTON LTD., TO ALTER
THIS DOCUMENT.

DATE _____

REVISIONS		
No.	DESCRIPTION	DATE
1.	INFORMATION ADDED. HYDRO/FIBRE CONNECTION REVISED	20.03.2025
2.	INFORMATION ADDED. ACCESS REVISED.	21.04.2025

ROGERS SITE: # C9849

GRADING & DRAINAGE PLAN

	FILE NAME:
DRAWN : X.Z.	2024-106(C9849)_GP.DWG
CHECKED : A.M.	PROJECT No. 2024-106
DATE: DECEMBER 18, 2024	

SHEET 1 OF 1	
TEP #	SHEET No. 1