

DRAFT

Stage 1 and 2 Archaeological Assessments, Warehouse and Logistics Facility, 3027 Cedar Creek Road, Parts 1–2, Registered Plan 58R-12355, Township of North Dumfries, Regional Municipality of Waterloo, Part of Lot 34, Concession 10, Geographic Township of North Dumfries, Former Waterloo County, Ontario

Prepared for
Royal Cedar Creek Holdings Ltd.
73 Stafford Drive
Brampton, ON L6W 1L3
Tel: (905) 451-9748

Licensed under
A. Dunlop
MCM Licence #P1146
PIF #P1146-0037-2024
ARA File #2024-0296

29/10/2025

Supplementary Documentation

TABLE OF CONTENTS

1.0	SUPPLEMENTARY DOCUMENTATION	1
1.1	Detailed Site Location Information	1
2.0	SD MAPS	2

SD MAPS

SD Map 1: Features of Potential with Site Information	2
SD Map 2: Locations of the Identified Sites	3
SD Map 3: Field Methods with Site Information	4
SD Map 4: Northern Sites	5
SD Map 5: Southern Sites	6

SD TABLES

SD Table 1: GPS Co-ordinates	1
------------------------------	---

1.0 SUPPLEMENTARY DOCUMENTATION

1.1 Detailed Site Location Information

In keeping with Section 7.6.1 of the 2011 Standards and Guidelines for Consultant Archaeologists, detailed site location information was not included within the project report. The known archaeological sites falling within 300 m of the project area are shown in SD Map 1. The locations of the identified sites appear in SD Map 2–SD Map 3, and detailed views of the Stage 2 results are presented in SD Map 4–SD Map 5. The GPS co-ordinates for the site extents appear in SD Table 1. These data should be excluded from the Ontario Public Register of Archaeological Reports.

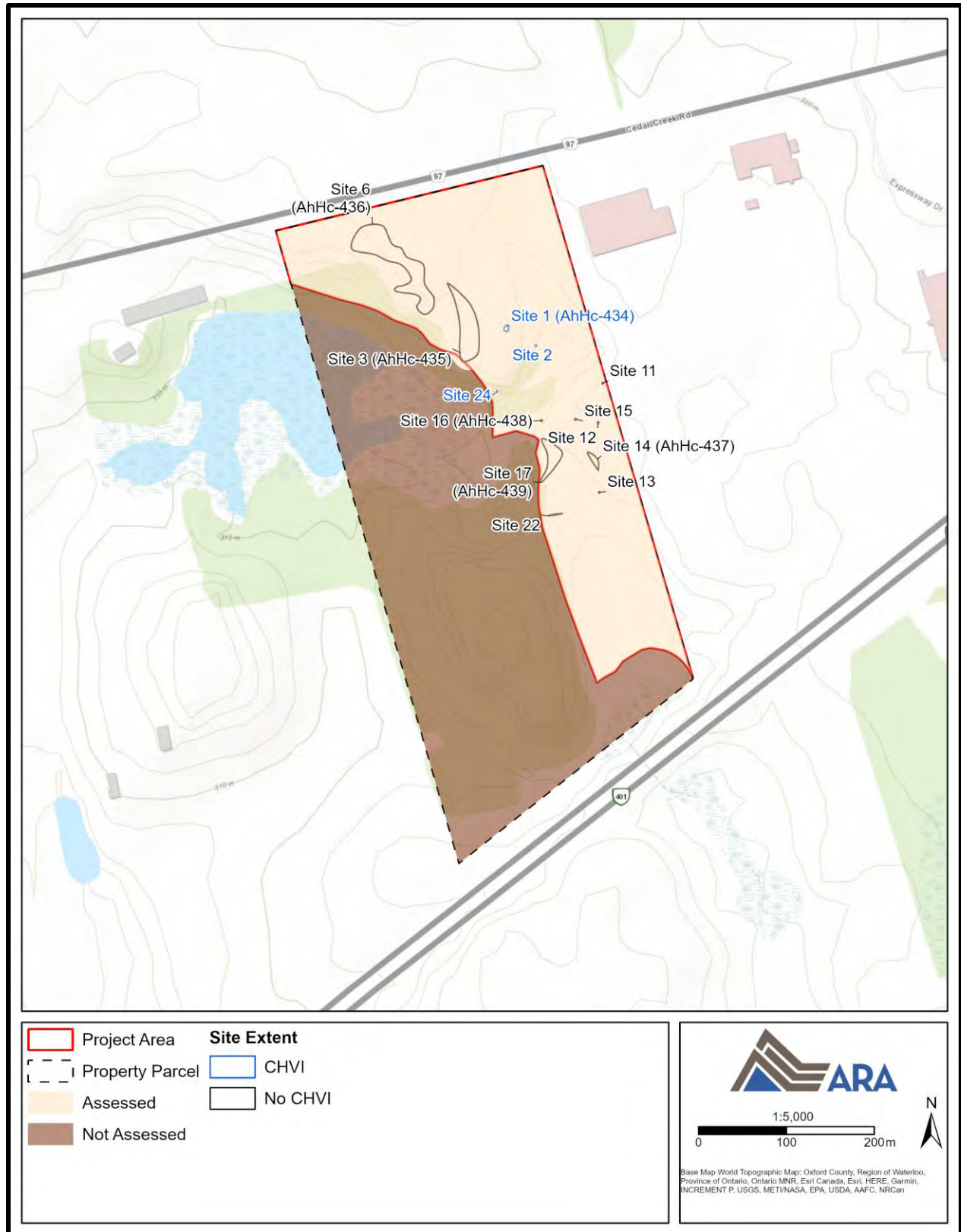
SD Table 1: GPS Co-ordinates

Site Identifier	Point Location	UTM Zone	Easting (m)	Northing (m)
Site 1 (AhHc-434)	Centre	17	543,518	4,797,260
	North	17	543,519	4,797,264
	East	17	543,520	4,797,257
	South	17	543,520	4,797,257
	West	17	543,515	4,797,259
Site 2	Centre	17	543,552	4,797,241
Site 3 (AhHc-435)	Centre	17	543,473	4,797,262
	North	17	543,451	4,797,312
	East	17	543,487	4,797,248
	South	17	543,467	4,797,223
	West	17	543,451	4,797,312
Site 6 (AhHc-436)	Centre	17	543,390	4,797,337
	North	17	543,376	4,797,378
	East	17	543,436	4,797,293
	South	17	543,425	4,797,276
	West	17	543,342	4,797,352
Site 11	Centre	17	543,628	4,797,198
Site 12	Centre	17	543,623	4,797,153
Site 13	Centre	17	543,624	4,797,074
Site 14 (AhHc-437)	Centre	17	543,618	4,797,110
	North	17	543,611	4,797,120
	South	17	543,623	4,797,099
Site 15	Centre	17	543,597	4,797,157
Site 16 (AhHc-438)	Centre	17	543,558	4,797,156
Site 17 (AhHc-439)	Centre	17	543,569	4,797,114
	North	17	543,559	4,797,135
	East	17	543,582	4,797,118
	South	17	543,557	4,797,085
	West	17	543,557	4,797,085
Site 22	Centre	17	543,574	4,797,048
	East	17	543,582	4,797,050
	West	17	543,565	4,797,047
Site 24	Centre	17	543,507	4,797,189

2.0 SD MAPS

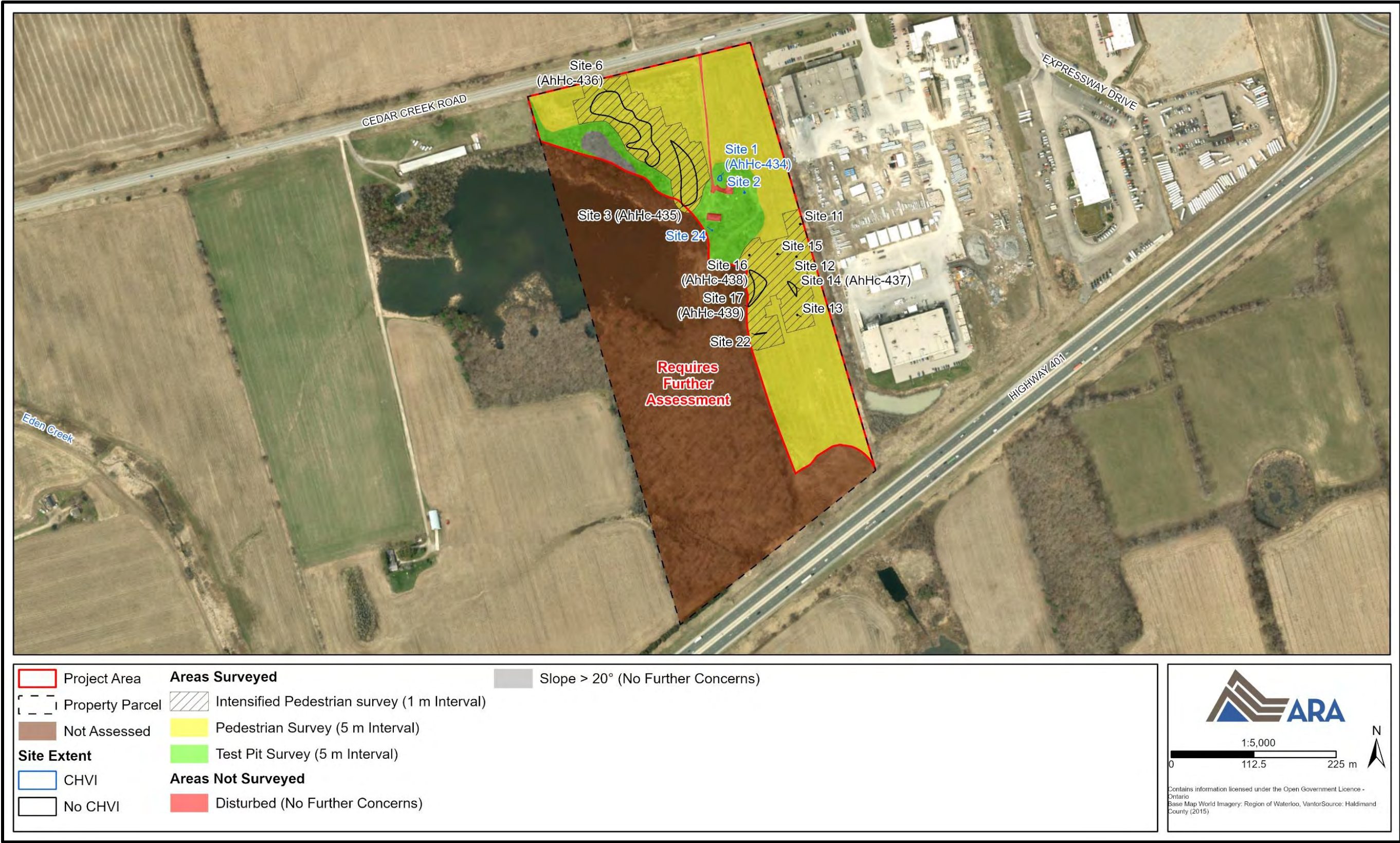


SD Map 1: Features of Potential with Site Information
(Produced under licence using ArcGIS® software by Esri, © Esri)

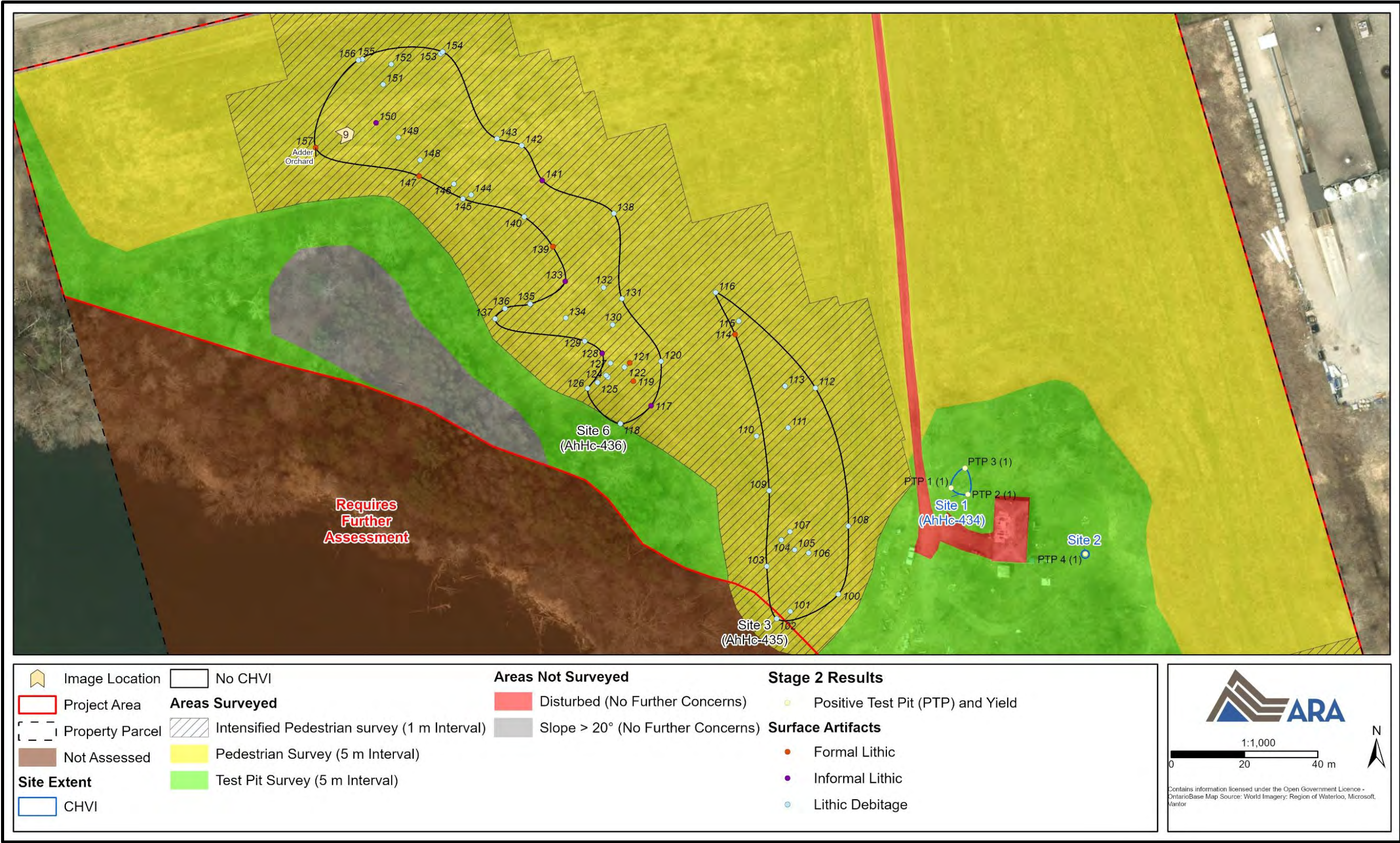


SD Map 2: Locations of the Identified Sites

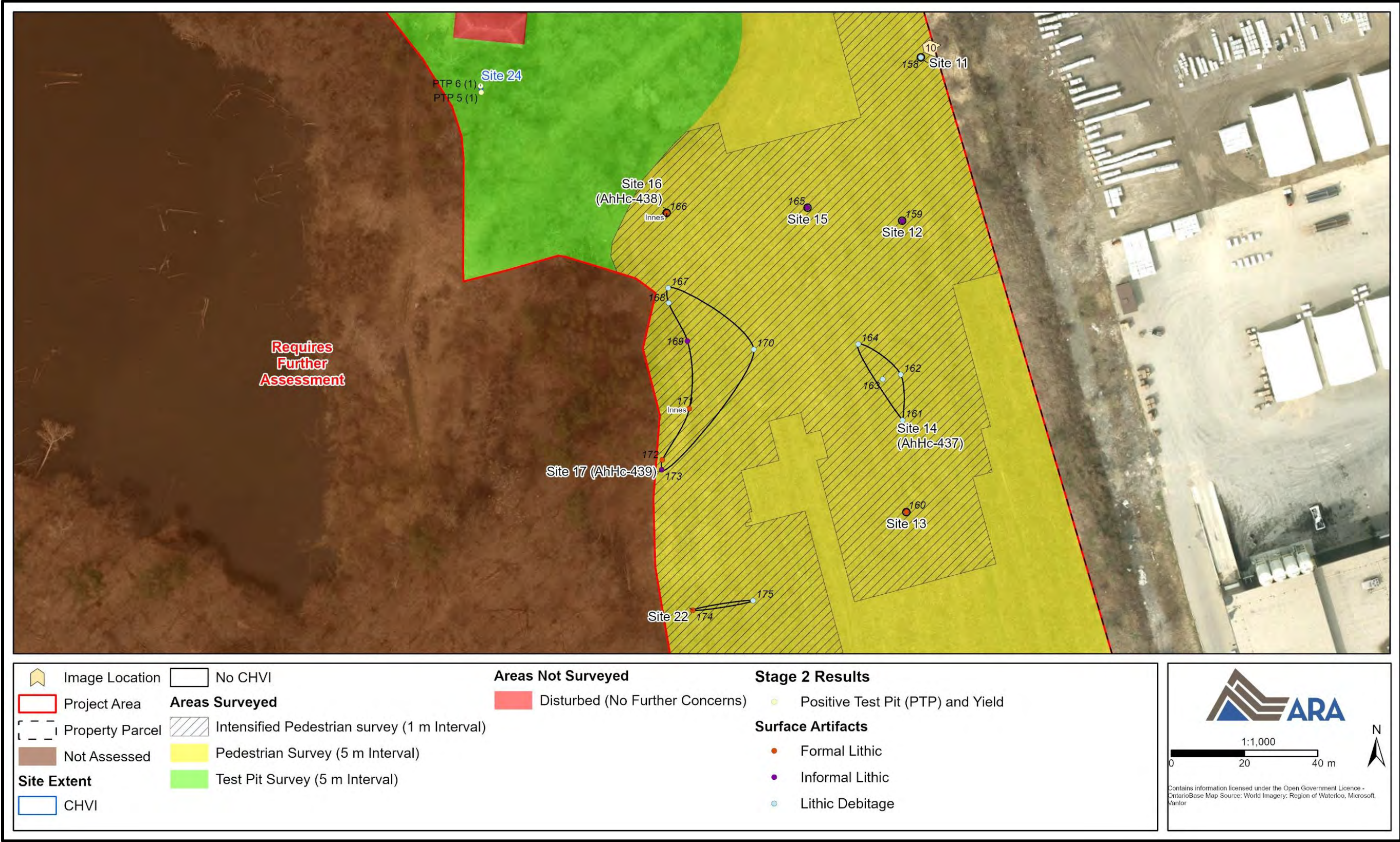
(Produced under licence using ArcGIS® software by Esri, © Esri)



SD Map 3: Field Methods with Site Information
(Produced under licence using ArcGIS® software by Esri, © Esri)



SD Map 4: Northern Sites
(Produced under licence using ArcGIS® software by Esri, © Esri)



SD Map 5: Southern Sites
(Produced under licence using ArcGIS® software by Esri, © Esri)