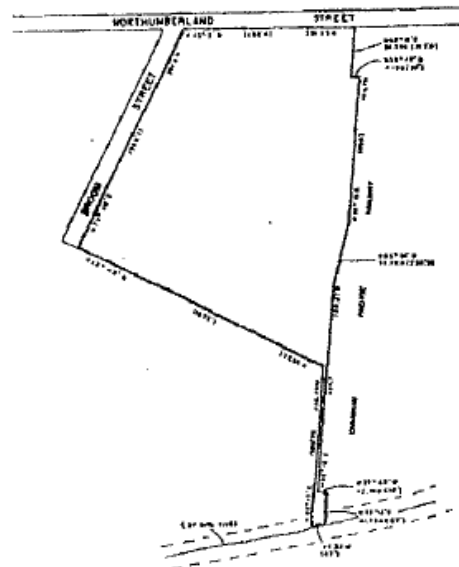


PART OF LOT I, REG. PLAN 679
PART OF LOT II, REG. PLAN 681
PART OF LOT 36, CONCESSION VIII
TOWNSHIP OF NORTH DUMFRIES
(FORMER VILLAGE OF AYR)

THIS IS SCHEDULE 'A' TO BY-LAW 680-83
PASSED THIS 15th DAY OF July, 1983.

Franklin A. Lisso
Mayor
Harry Griffin
Clerk



NOTE: APPROXIMATE IMPERIAL EQUIVALENTS SHOWN IN BRACKETS.

SEE PART 139 - SCHEDULE 'B'
SCALE: 1:4000

SECTION 20.1.4

PART OF LOT 23
CONCESSION XII
TOWNSHIP OF NORTH DUMFRIES

Section 20.1.5 has been deleted
and replaced with Section 20.1.165

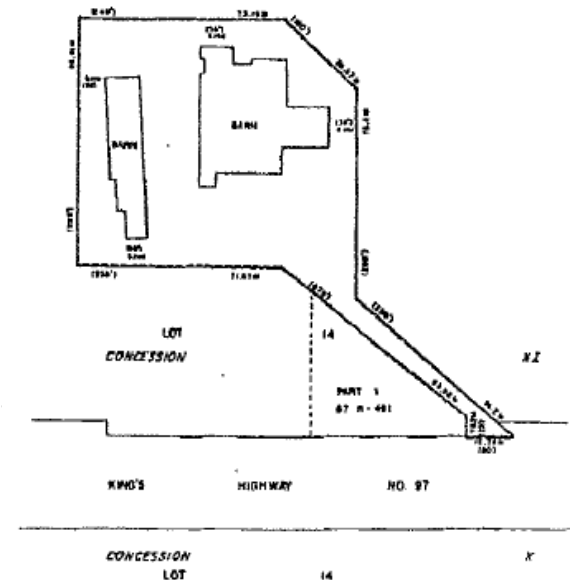
SEE PART 91 - SCHEDULE 'B'
SCALE: 1:3000

SECTION 20.1.5

PART OF LOT 14
CONCESSION XI
TOWNSHIP OF NORTH DUMFRIES

THIS IS SCHEDULE 'A' TO BY-LAW 680-83,
PASSED THIS 15th DAY OF July, 1983.

Franklin A. Lisso
Mayor
Harry Griffin
Clerk

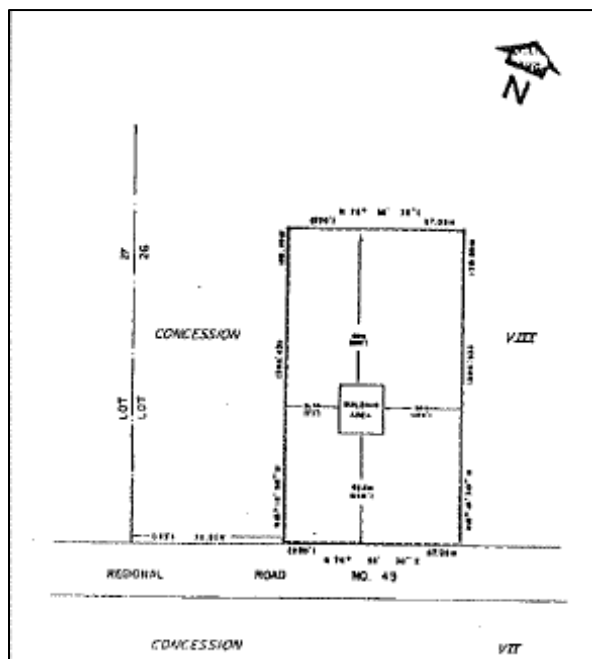


NOTE: APPROXIMATE IMPERIAL EQUIVALENTS SHOWN IN BRACKETS.
ALL DIMENSIONS ARE APPROXIMATE.

SEE PART 76 - SCHEDULE 'B'
SCALE: 1:1250

SECTION 20.1.6

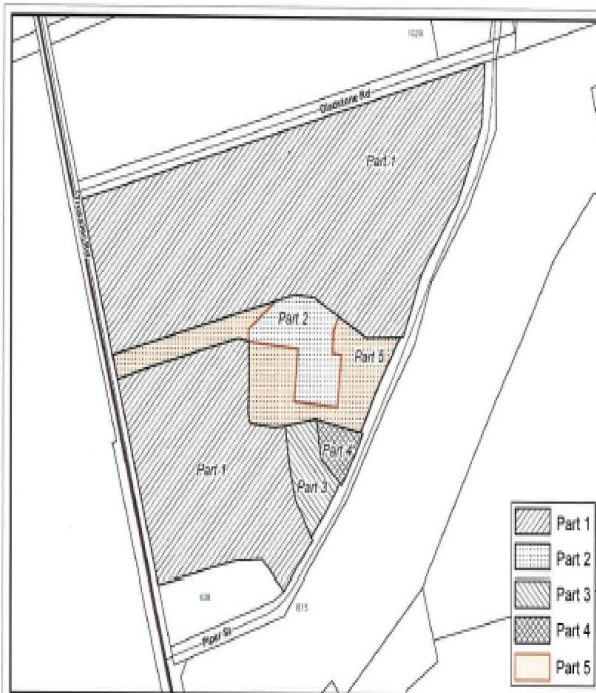
PART OF LOT 26
CONCESSION 8
TOWNSHIP OF NORTH DUMFRIES



SEE PART 37 of Schedule B

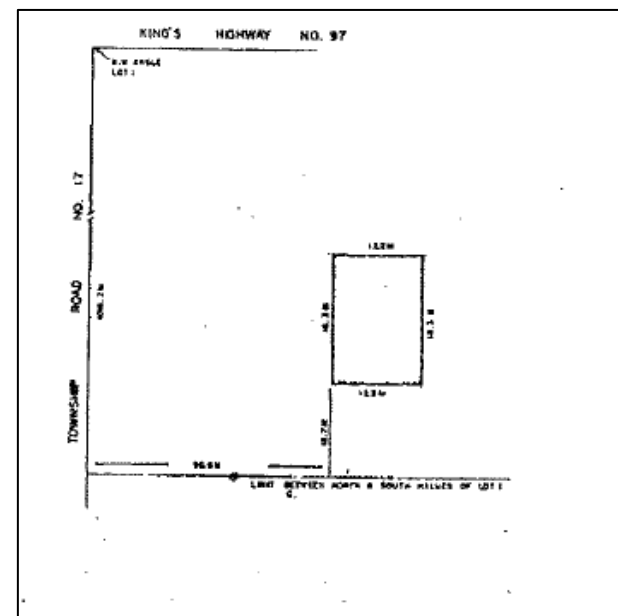
Section 20.1.7

Schedules 'A' and 'B' to By-law No. 3416-23



Section 20.1.8 of Schedule 'A' and
Part 21 of Schedule 'B' as hereby
amended.

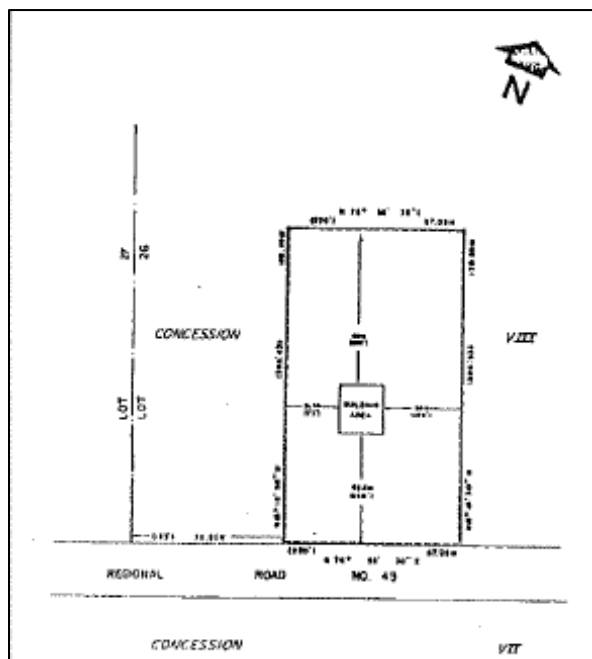
PART OF LOT 1
CONCESSION 8
TOWNSHIP OF NORTH DUMFRIES
(BEVERLY SECTION)



SEE PART 115 of Schedule B

Section 20.1.9

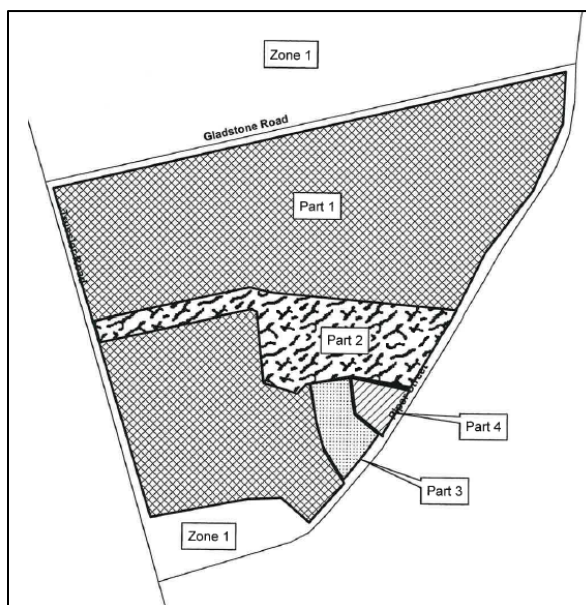
PART OF LOT 26
CONCESSION 8
TOWNSHIP OF NORTH DUMFRIES



SEE PART 37 of Schedule B

Section 20.1.7

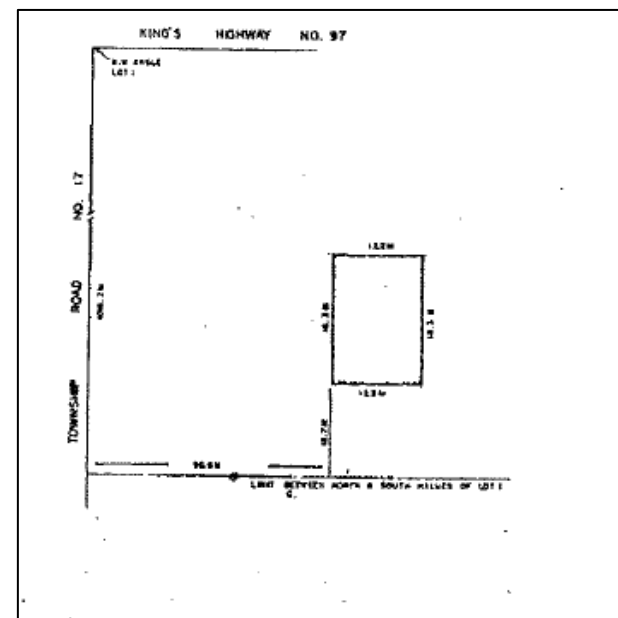
PART OF LOT 38
CONCESSION 7
TOWNSHIP OF NORTH DUMFRIES



SEE PART 21 of Schedule 'B'

Section 20.1.8

PART OF LOT 1
CONCESSION 8
TOWNSHIP OF NORTH DUMFRIES
(BEVERLY SECTION)

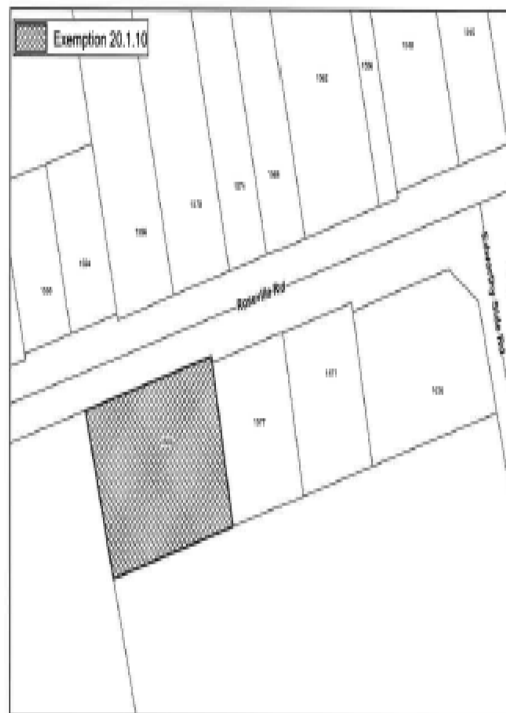


SEE PART 115 of Schedule B

Section 20.1.9

Schedules 'A' and 'B' to By-law No. 3363-22

PT LT 19 CON 11 NORTH DUMFRIES AS IN W6530649 EXCEPT PTS 1-3 67R2167 & PTS 1 & 2 67R704; NORTH DUMFRIES

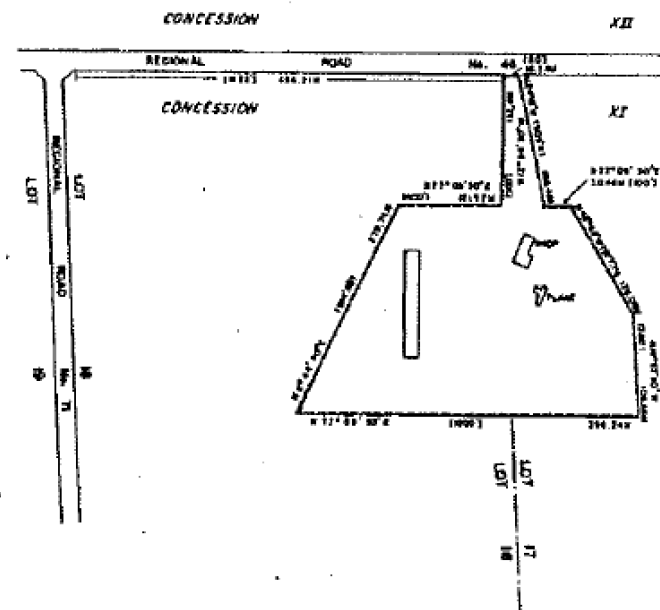


Section 20.1.10 of Schedule 'A' and Part 78 of Schedule 'B' as hereby amended.

PART OF LOTS 17 & 18 CONCESSION XI TOWNSHIP OF NORTH DUMFRIES

THIS IS SCHEDULE 'A' TO BY-LAW 689-83,
PASSED THIS 18th DAY OF July, 1983.

Franklin A. Lingo
Harry Griffin



NOTE: APPROXIMATE IMPERIAL EQUIVALENTS SHOWN IN BRACKETS

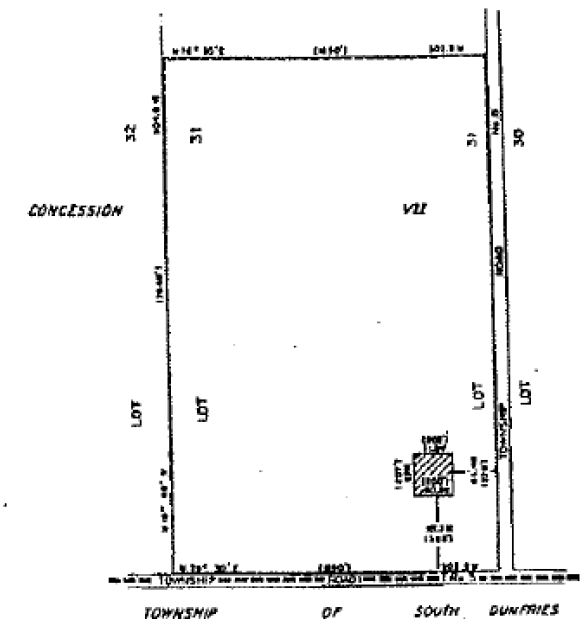
SEE PARTS 77 & 78 - SCHEDULE 'B'
SCALE 1:15000

SECTION 20.1.11

PART OF LOT 31 CONCESSION VII TOWNSHIP OF NORTH DUMFRIES

THIS IS SCHEDULE 'A' TO BY-LAW 689-83,
PASSED THIS 18th DAY OF July, 1983.

Franklin A. Lingo
Harry Griffin



NOTE: APPROXIMATE IMPERIAL EQUIVALENTS SHOWN IN BRACKETS
AREA OF OPERATION

SEE PART 17 - SCHEDULE 'B'
SCALE 1:6000

SECTION 20.1.12

--	--	--

Schedules 'A' and 'B' to By-law No. 3362-22
PT LT H CON 8 BEVERLY AS IN WS607662

PART OF LOT 25 & 26
CONCESSION VII
TOWNSHIP OF NORTH DUMFRIES

THIS IS SCHEDULE 'A' TO BY-LAW 889-83,
PASSED THIS 18th DAY OF JULY, 1983.

PART OF LOT 1 E.G.R.
CONCESSION VII
TOWNSHIP OF NORTH DUMFRIES

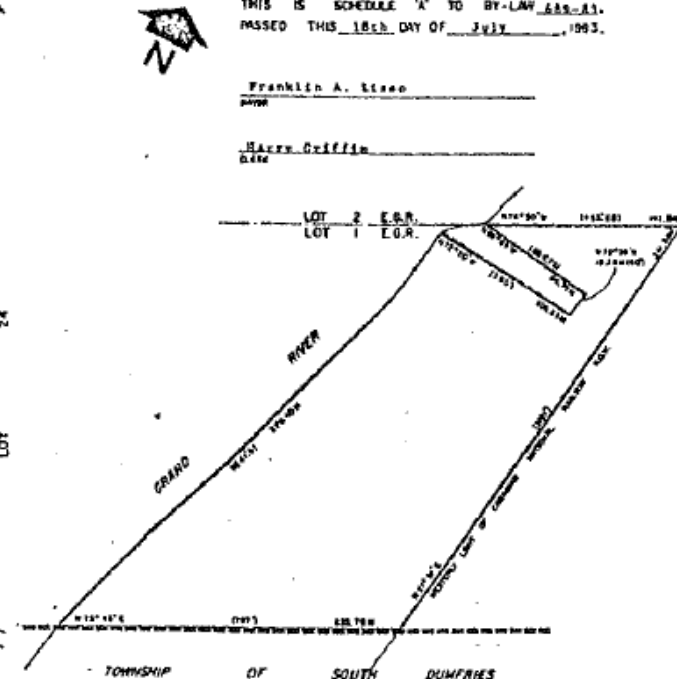
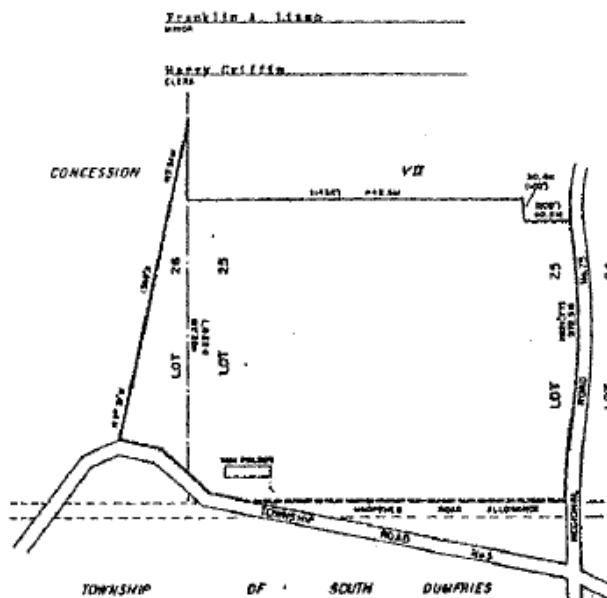
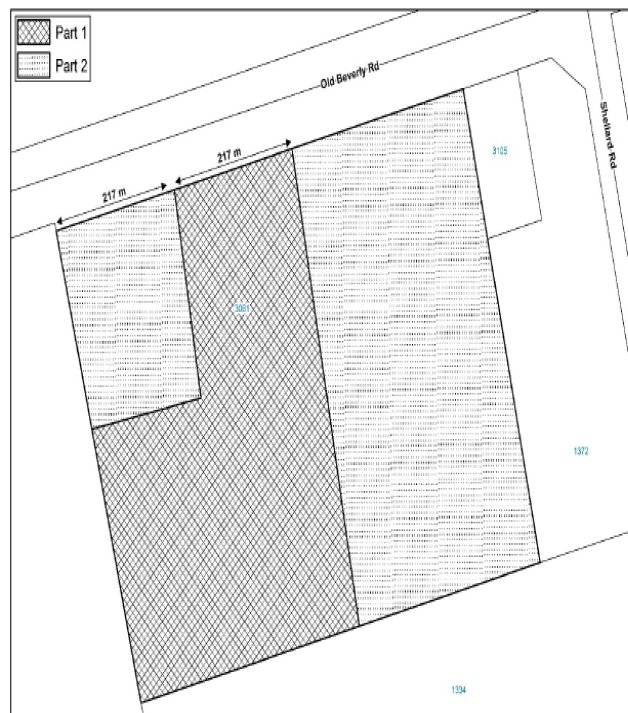
THIS IS SCHEDULE 'A' TO BY-LAW 889-83,
PASSED THIS 18th DAY OF JULY, 1983.

Franklin A. Lisco
MAYOR

Harry Griffin
CLERK

Franklin A. Lisco
MAYOR

Harry Griffin
CLERK



NOTE: APPROXIMATE IMPERIAL EQUIVALENTS SHOWN IN BRACKETS.

NOTE: APPROXIMATE IMPERIAL EQUIVALENTS SHOWN IN BRACKETS.

Part 1 : Change to Zone 1 - Z.1 (Agriculture) with exemption 20.1.34

Part 2 : Change to Zone 1 - Z.1 (Agriculture)

This is an excerpt of Schedule 'A' and Part 115 of Schedule 'B' forming part of By-law 3362-22 passed by Council this 7th day of November 2022.

Section 20.1.34 of Schedule 'A' and Part 115 of Schedule 'B' as hereby amended.

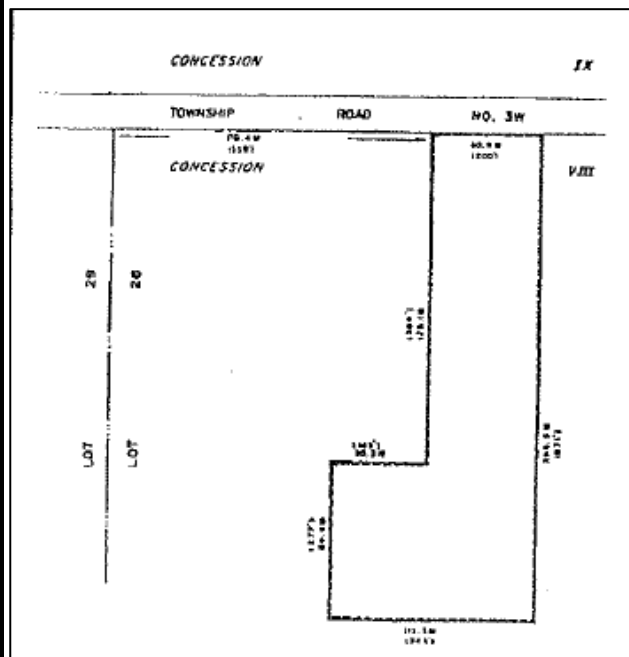
SEE PARTS 14 & 15 - SCHEDULE 'B'
SCALE: 1:5000

SECTION 20.1.35

SEE PART 5 - SCHEDULE 'B'
SCALE: 1:2500

SECTION 20.1.36

PART OF LOT 28
CONCESSION 8
TOWNSHIP OF NORTH DUMFRIES



SEE PART 38 of Schedule B

Section 20.1.43

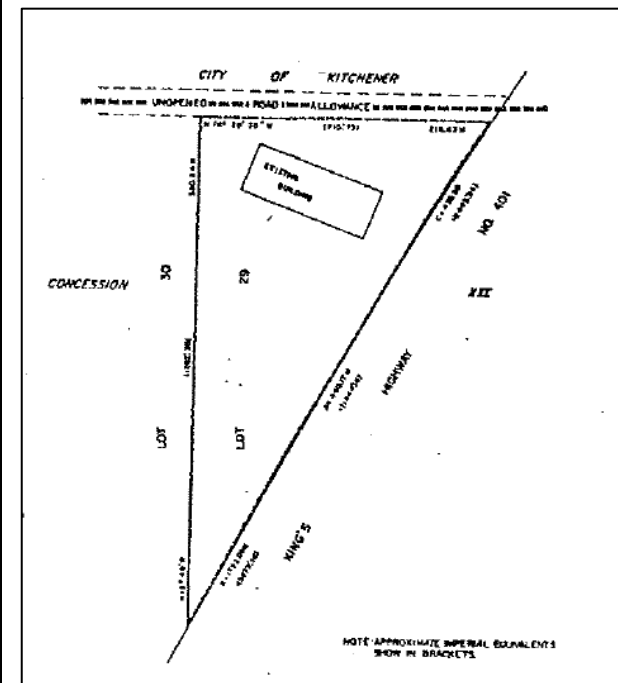
PART OF LOT 34
CONCESSION 7
TOWNSHIP OF NORTH DUMFRIES



SEE PART 139 of Schedule 'B'

SECTION 20.1.44

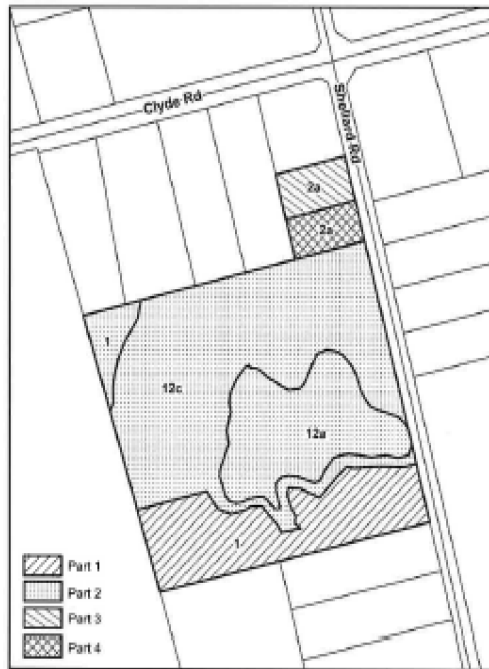
PART OF LOT 29
CONCESSION 12
TOWNSHIP OF NORTH DUMFRIES







SEE PART 115 of Schedule B

Section 20.1.45

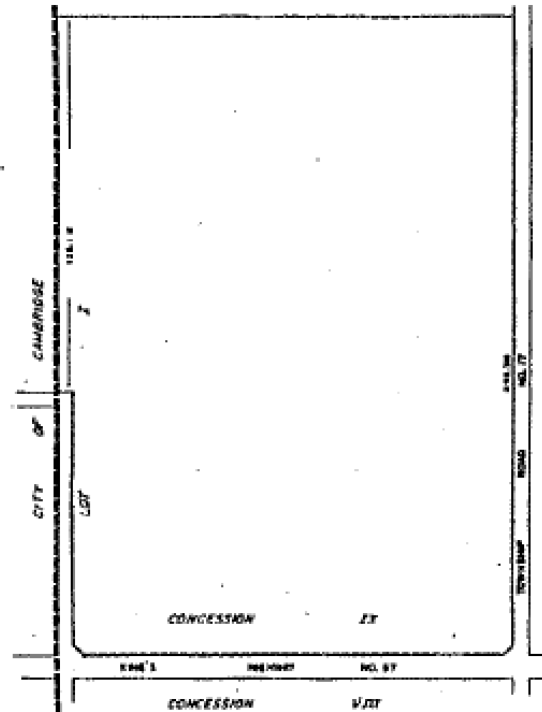
Schedules 'A' and 'B' to By-law No. 3326-22
BEVERLY CON 9 PT LOT 1 AND RP 58R17578 PT 1



-  Part 1 : A minimum frontage of 65m, and a minimum area of 2.4ha
-  Part 2 : A minimum area of 8.0ha, subject to holding provision (h)
-  Part 3 : Change to Z.2A (Rural Residential)
-  Part 4 : Change to Z.2A (Rural Residential) and recognize existing accessory building

Section 20.1.64 of Schedule 'A'
and Part 127 of Schedule 'B' as
hereby amended.

PART OF LOT I
CONCESSION IX
TOWNSHIP OF NORTH DUMFRIES
(BEVERLY SECTION)



THIS IS SCHEDULE 'A' TO BY-LAW 689-83,
PASSED THIS 18th DAY OF July, 1983.

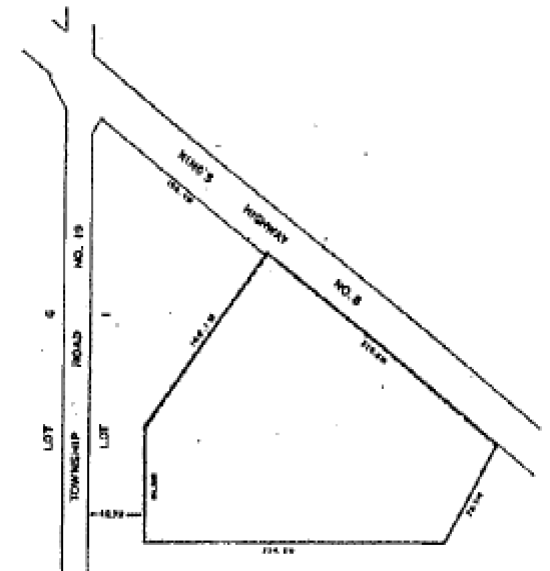
Franklin A. Linn
ALD

Nancy Griffin
ALD

SEE PART 121-SCHEDULE 'B'
SCALE-1:5000

SECTION 20.1.65

PART OF LOT I
CONCESSION VII
TOWNSHIP OF NORTH DUMFRIES
BEVERLY SECTION



THIS IS SCHEDULE 'A' TO BY-LAW 689-83,
PASSED THIS 18th DAY OF July, 1983.

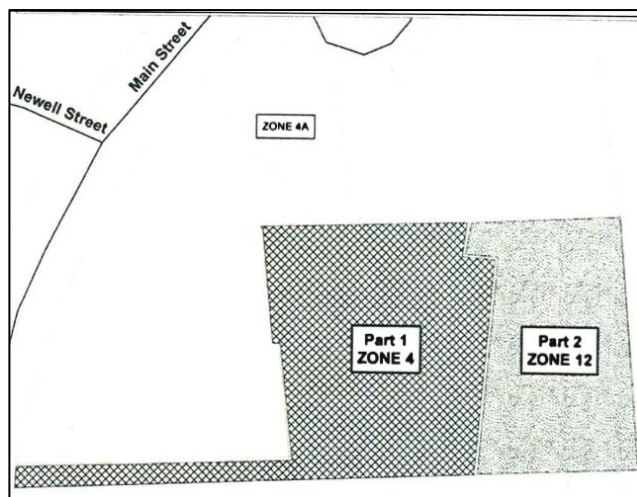
Franklin A. Linn
ALD

Nancy Griffin
ALD

SEE PART 103-SCHEDULE 'B'
SCALE-1:2500

SECTION 20.1.66

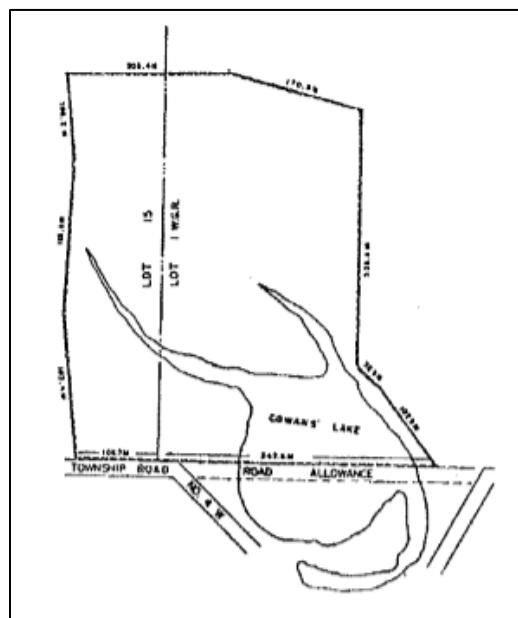
PART OF LOT 3
CONCESSION VIII
TOWNSHIP OF NORTH DUMFRIES



SEE PART 139 of Schedule B

Section 20.1.79

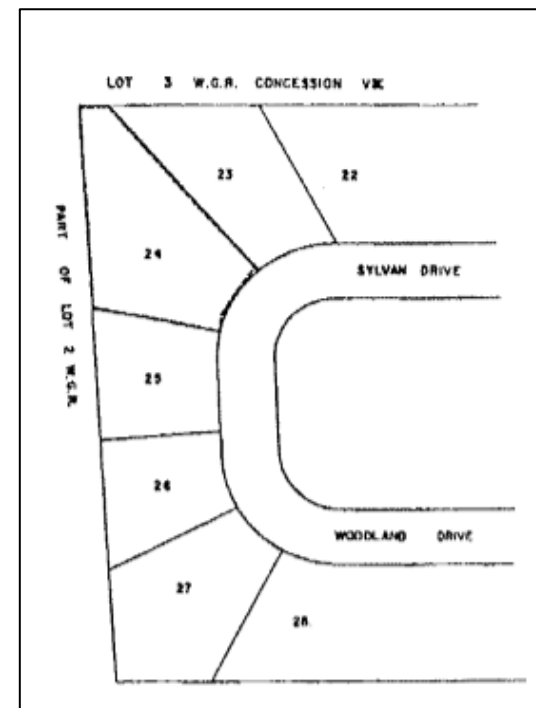
PART OF LOT 15 & LOT I W.G.R
CONCESSION viii
TOWNSHIP OF NORTH DUMFRIES



SEE PART 29 of Schedule 'B'

SECTION 20.1.80

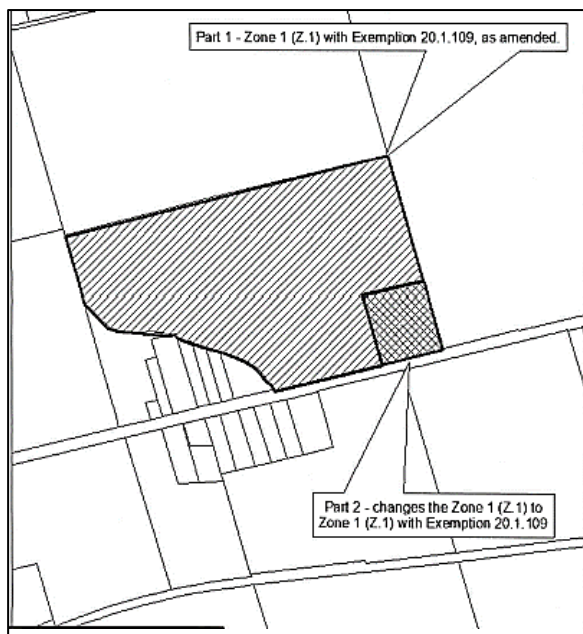
LOT 24
REGISTERED PLAN NO. 902
TOWNSHIP OF NORTH DUMFRIES



SEE PART 30 of Schedule B

Section 20.1.81

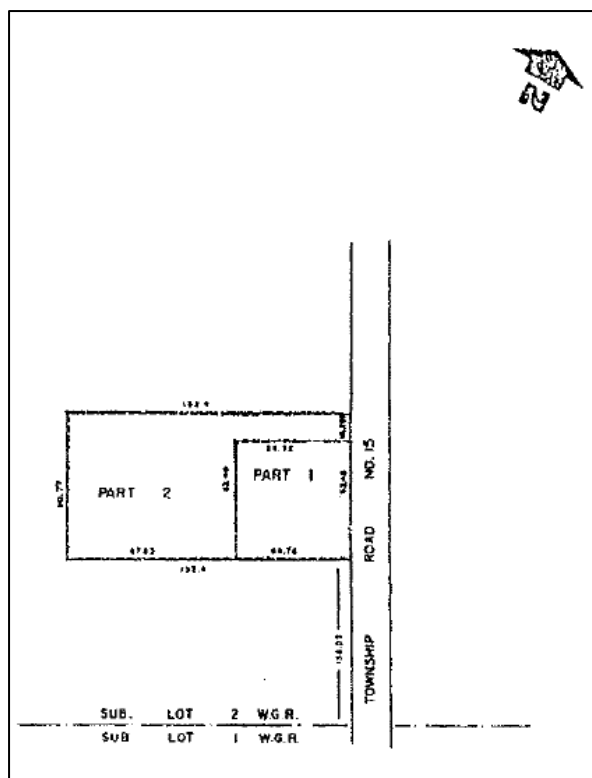
PART OF LOT 27 & 28
CONCESSION 12
TOWNSHIP OF NORTH DUMFRIES



SEE PART 92 of Schedule B

Section 20.1.109

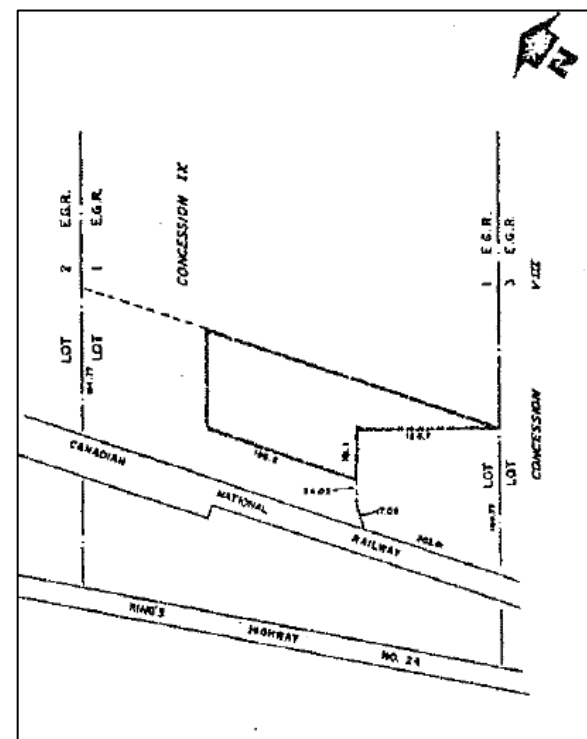
PART OF SUBLOT 2, WGR
CONCESSION 8
TOWNSHIP OF NORTH DUMFRIES



SEE PART 30 on Schedule B

Section 20.1.110

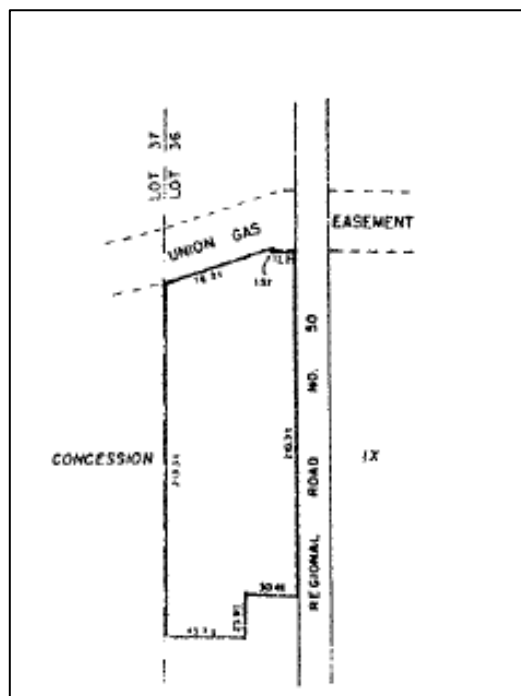
PART OF LOT 1, E.G.R.
CONCESSION 9
TOWNSHIP OF NORTH DUMFRIES



SEE PART 47 of Schedule B

Section 20.1.111

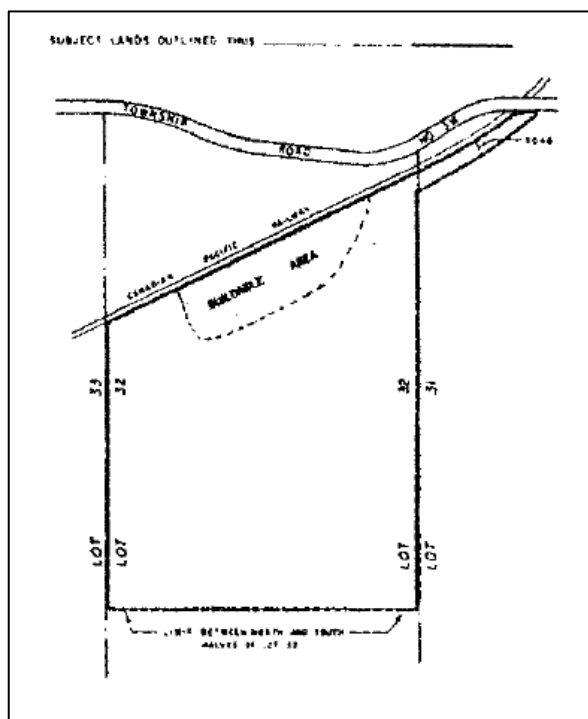
PART OF LOT 36
CONCESSION 9
TOWNSHIP OF NORTH DUMFRIES



SEE PART ____ of Schedule B

Section 20.1.130

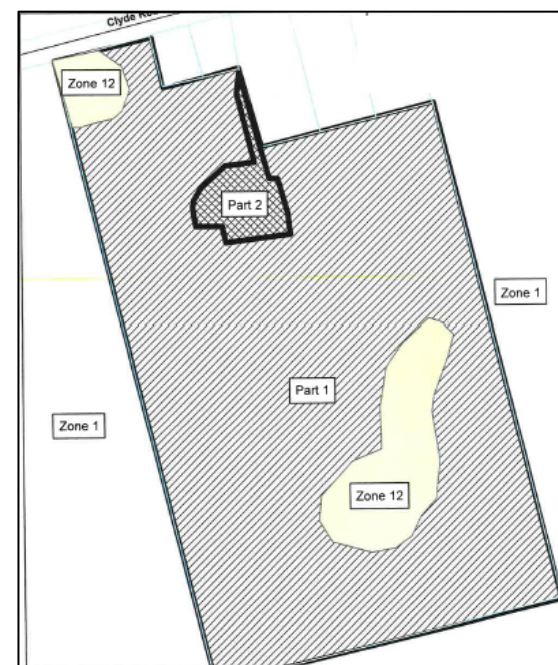
PART OF LOTS 31 & 32
CONCESSION 8
TOWNSHIP OF NORTH DUMFRIES



SEE PART 40 on Schedule B

Section 20.1.131

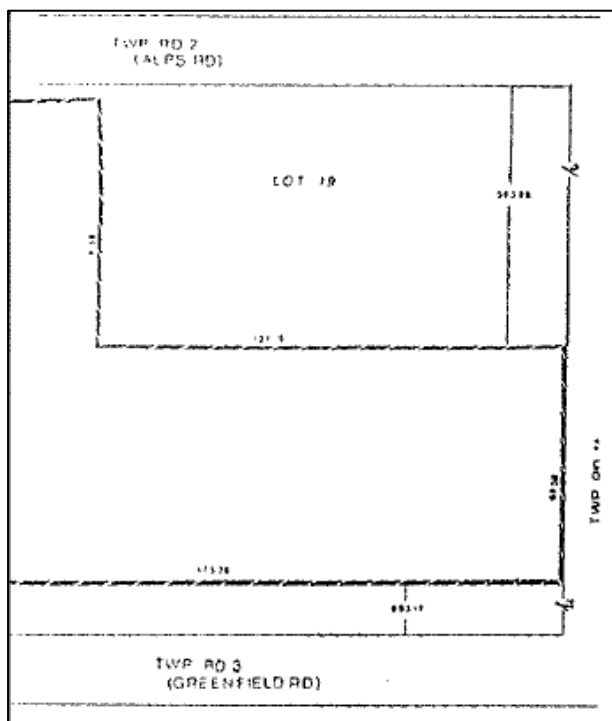
PART OF LOT 5
CONCESSION 9
TOWNSHIP OF NORTH DUMFRIES



SEE PART 129 of Schedule B

Section 20.1.132

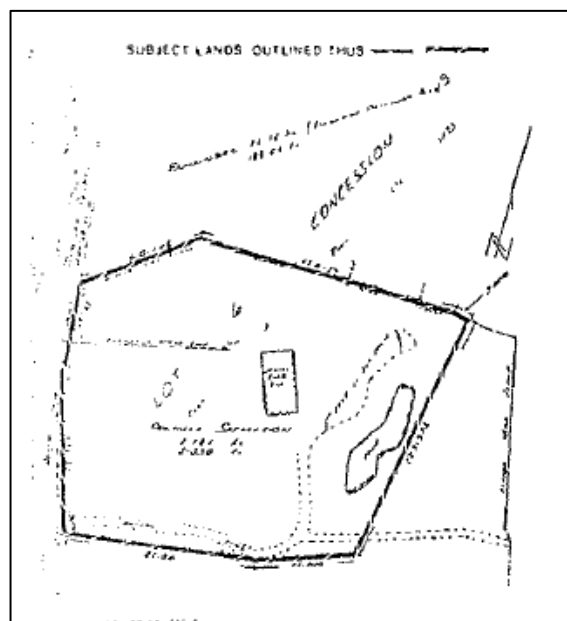
PART OF LOT 19
CONCESSION 9
TOWNSHIP OF NORTH DUMFRIES



SEE PART 43 of Schedule B

Section 20.1.163

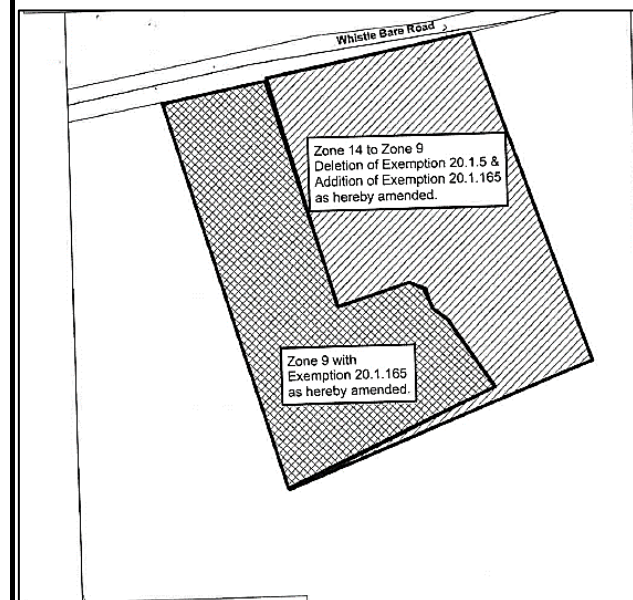
PART OF LOTS 6
CONCESSION 9
TOWNSHIP OF NORTH DUMFRIES



SEE PART 40 on Schedule B

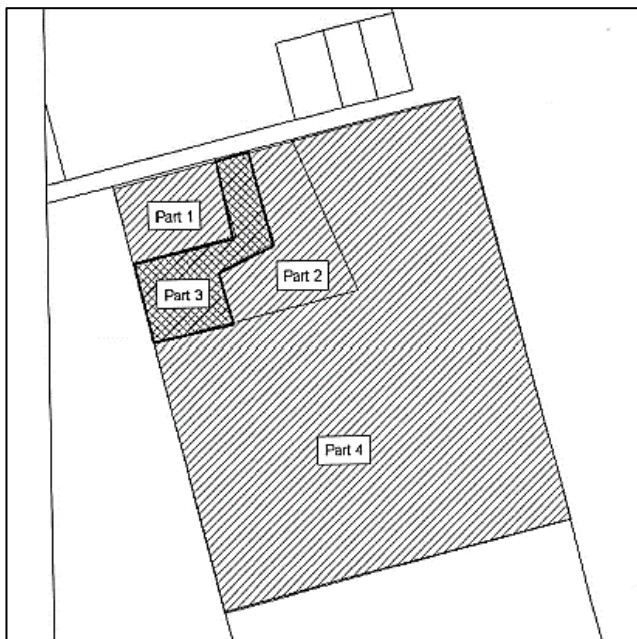
Section 20.1.164

PART OF LOT 23
CONCESSION 12
TOWNSHIP OF NORTH DUMFRIES

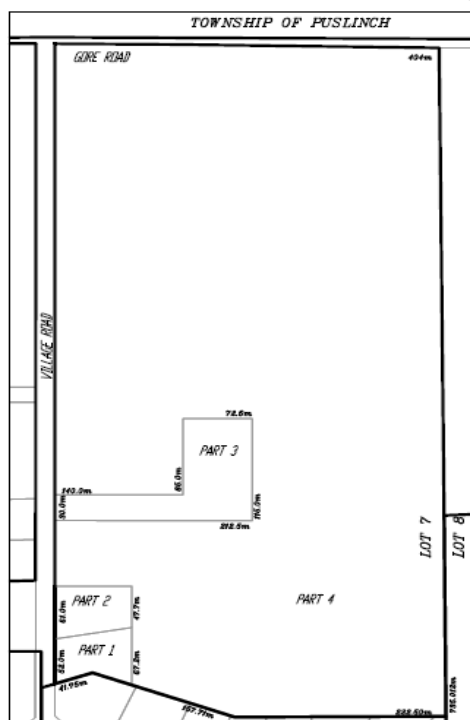


SEE PART 91 of Schedule B

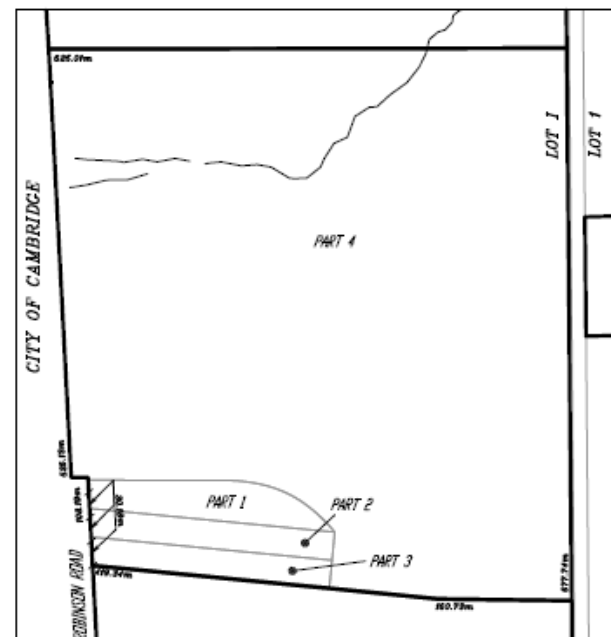
Section 20.1.165



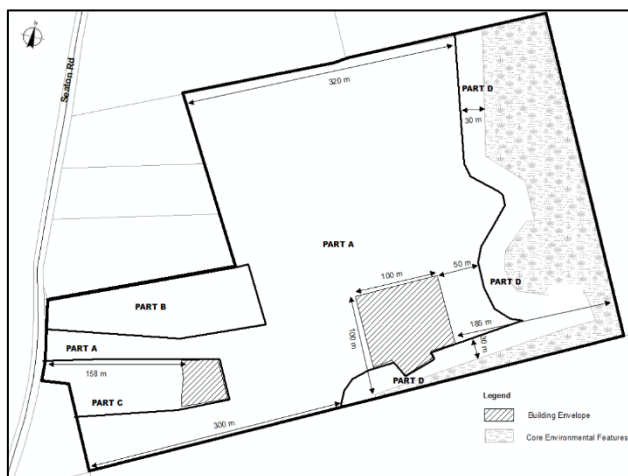
Section 20.1.176



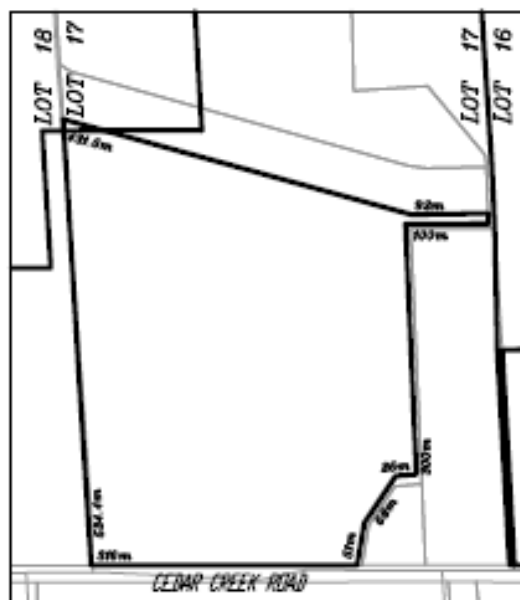
Section 20.1.177



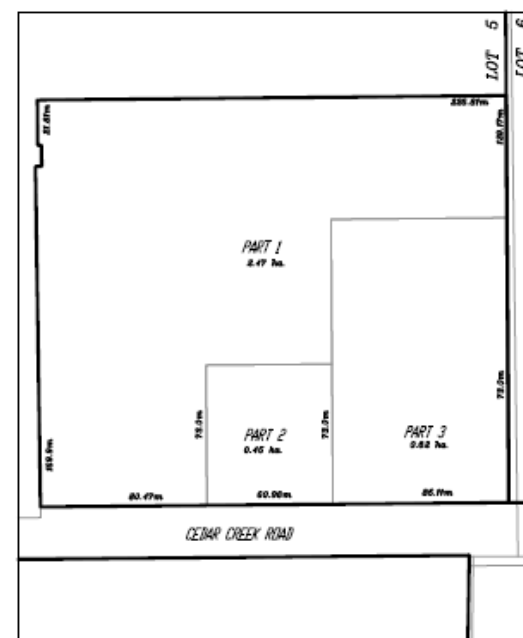
Section 20.1.178



Section 20.1.179



Section 20.1.180



Section 20.1.181

CEDAR CREEK ROAD

504.60m

LOT 16

554.64m

LOT 15

552.75m

504.60m

Section 20.1.203

229m

700m

419.5m

226.3m

REGIONAL ROAD

Ave. 50

LOT 36

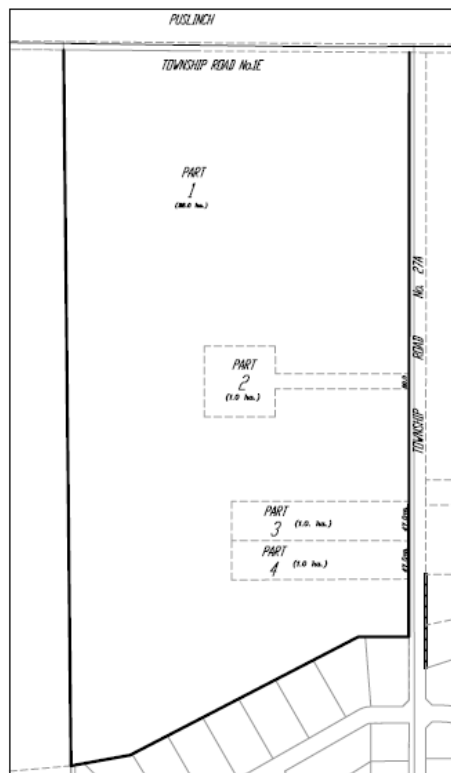
LOT 35

Section 20.1.204

[illegible]

Section 20.1.205

PART LOTS 22 & 23
CONCESSION 10
TOWNSHIP OF NORTH DUMFRIES



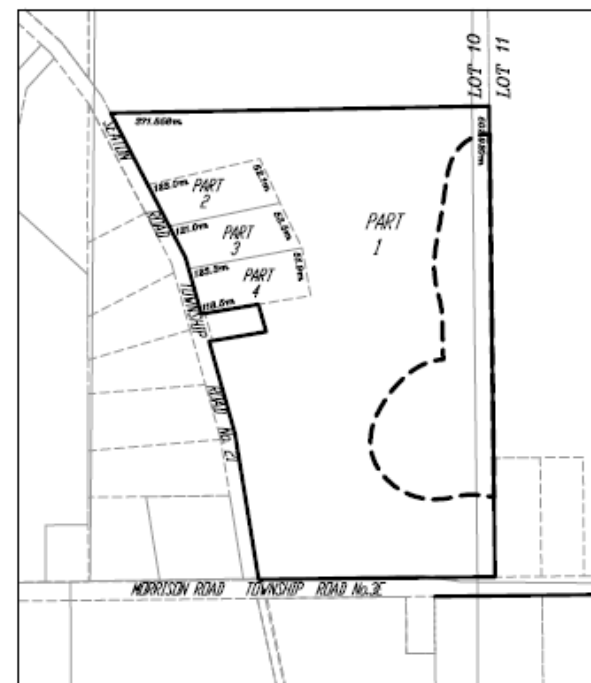
SEE PARTS 136 of Schedule B Section 20.1.221

PART LOTS 23 & 24
CONCESSION 10
TOWNSHIP OF NORTH DUMFRIES



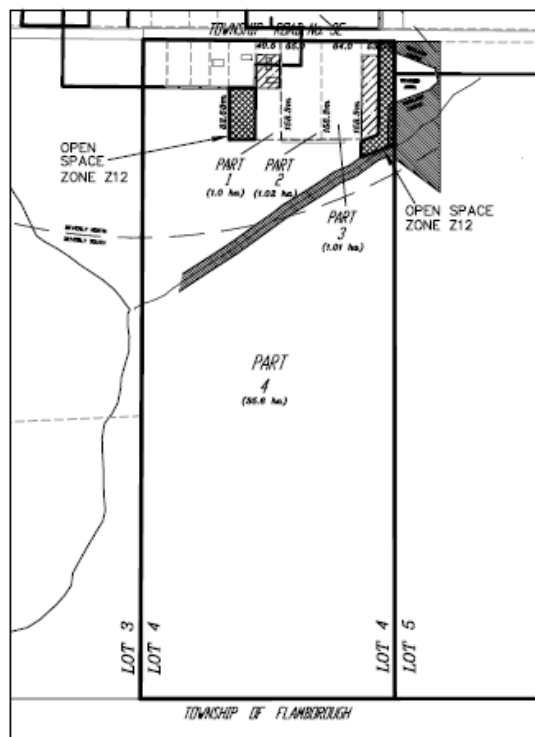
SEE PART 67 & 68 on Schedule B Section 20.1.222

PART LOTS 24 & 25
CONCESSION 10
TOWNSHIP OF NORTH DUMFRIES



SEE PART 114 of Schedule B Section 20.1.223

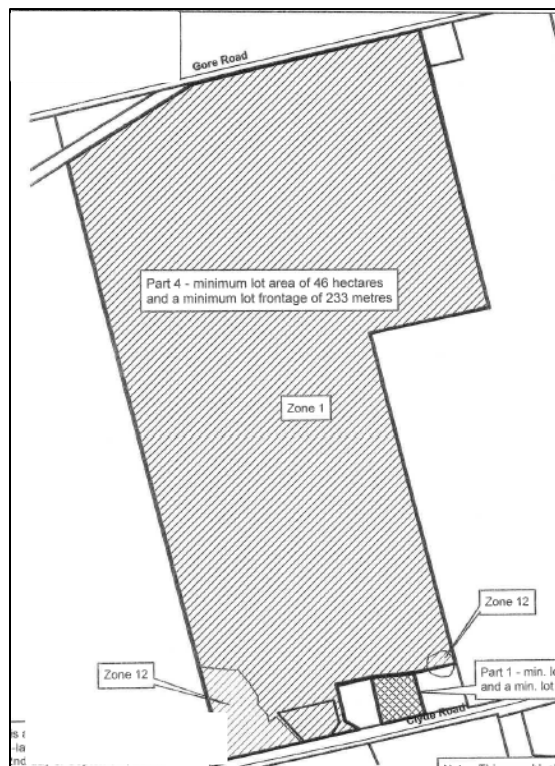
PART OF LOT 4
CONCESSION 7
TOWNSHIP OF NORTH DUMFRIES



SEE PART 105 of Schedule B

Section 20.1.236

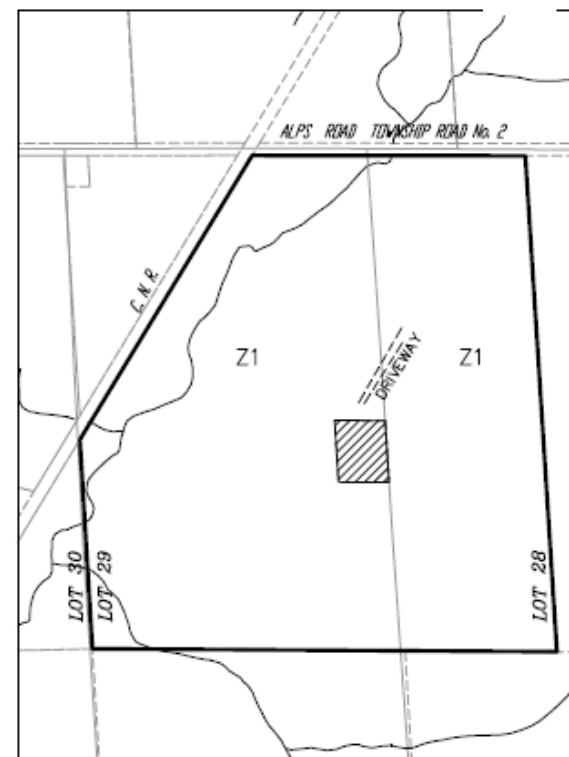
PART OF LOTS 3 & 4
CONCESSION 10
TOWNSHIP OF NORTH DUMFRIES



SEE PART 134 on Schedule B

Section 20.1.237

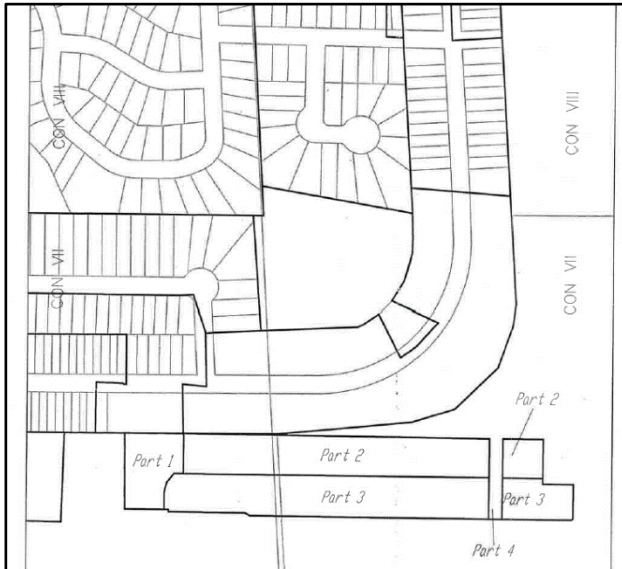
PART OF LOT 1
CONCESSION 9
TOWNSHIP OF NORTH DUMFRIES



SEE PART 57 & 58 of Schedule B

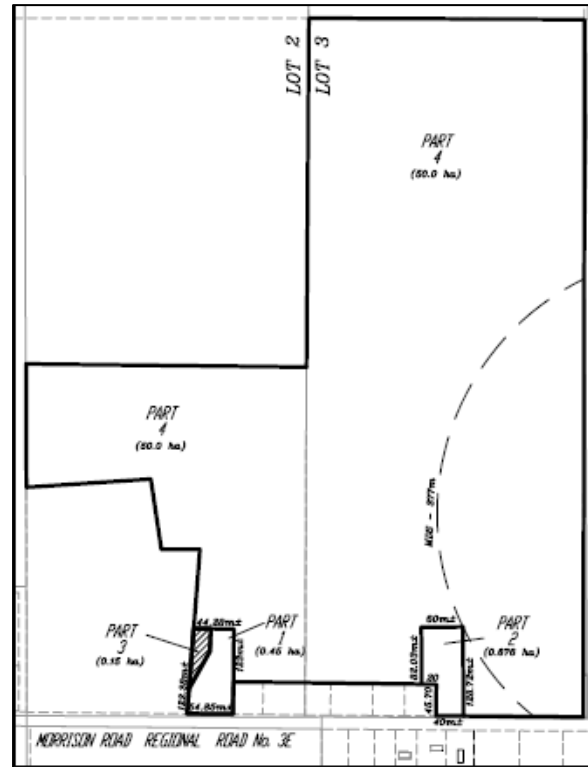
Section 20.1.238

ZONING
AYR SETTLEMENT AREA
TOWNSHIP OF NORTH DUMFRIES



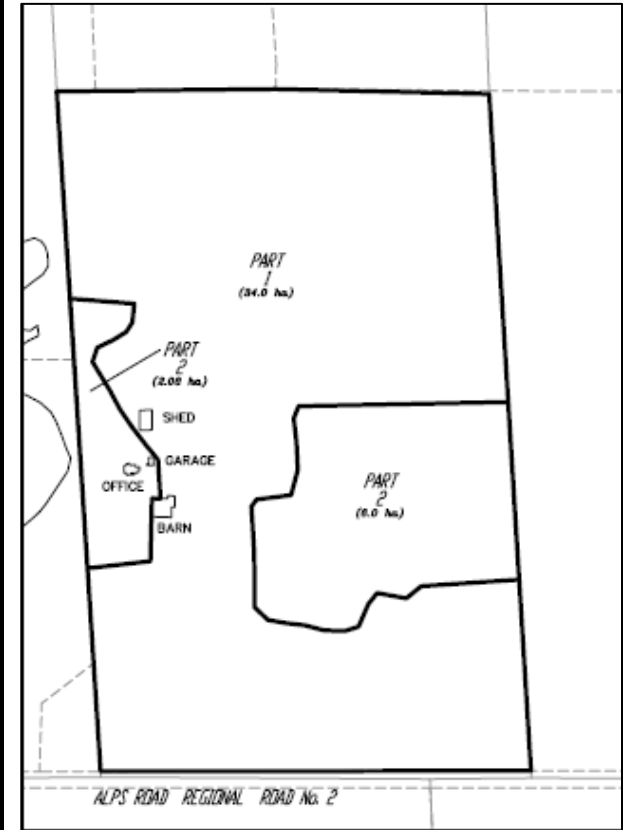
SEE PARTs 139 of Schedule B Section 20.1.251

PART OF LOT 2 & 3
CONCESSION 8
TOWNSHIP OF NORTH DUMFRIES



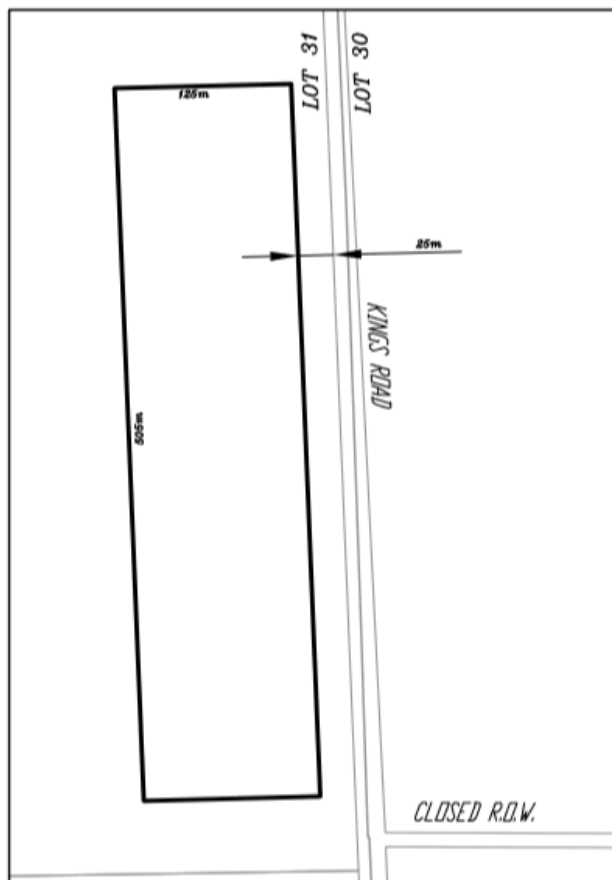
SEE PART 110/111 on Schedule B Section 20.1.252

PART OF LOT 16 & 17
CONCESSION 10
TOWNSHIP OF NORTH DUMFRIES



SEE PART 64 of Schedule B Section 20.1.253

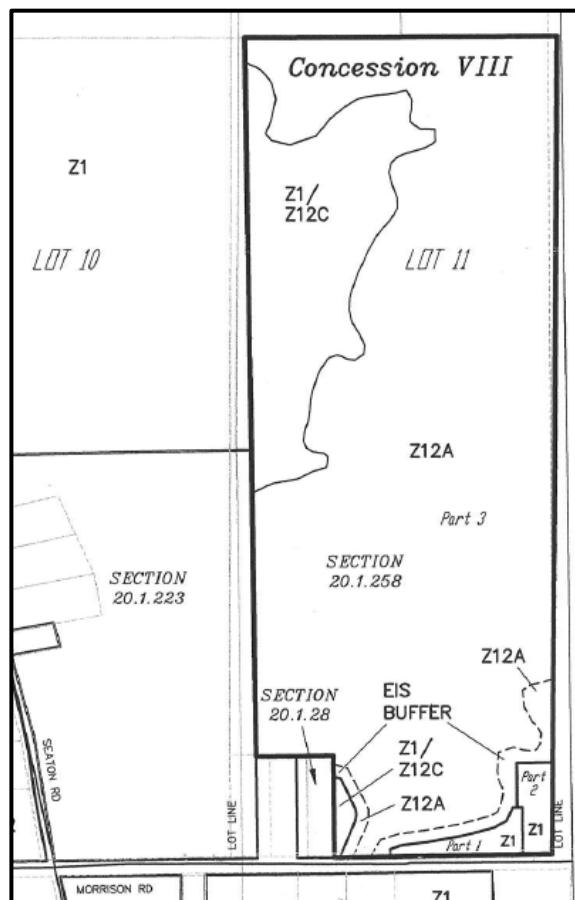
PART OF LOT 31
CONCESSION XII
TOWNSHIP OF NORTH DUMFRIES



SEE PART 93 of Schedule B

Section 20.1.257

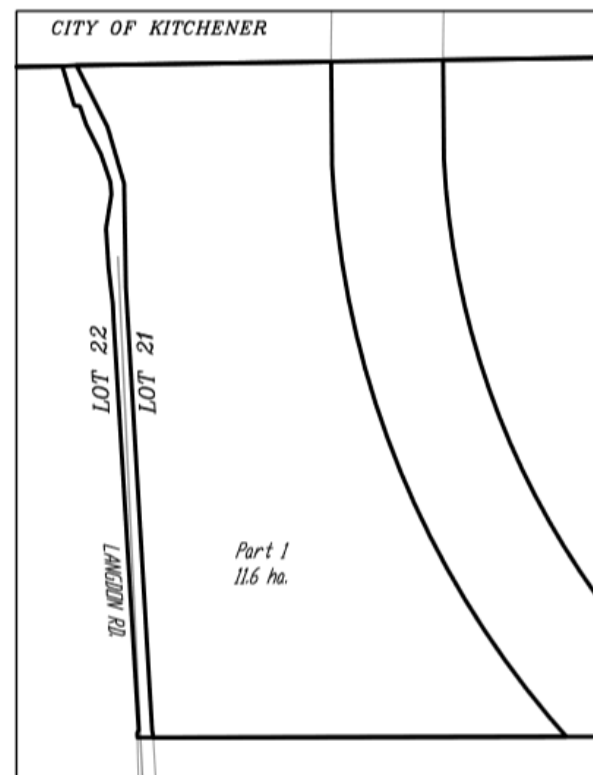
PART OF LOT 11
CONCESSION VIII
TOWNSHIP OF NORTH DUMFRIES
(BEVERLY SECTION)



SEE PART 114 on Schedule B

Section 20.1.252

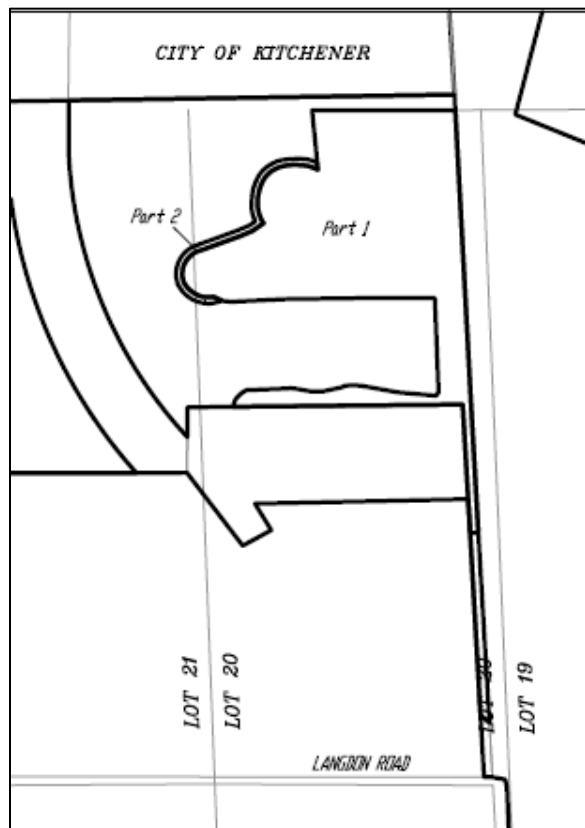
PART OF LOT 21
CONCESSION XII
TOWNSHIP OF NORTH DUMFRIES



SEE PART 20 of Schedule B

Section 20.1.253

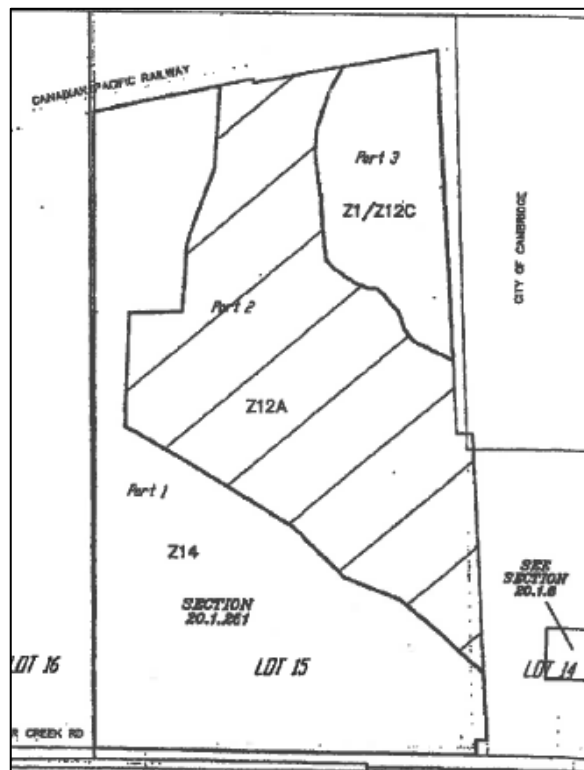
PART OF LOT 20
CONCESSION 12
TOWNSHIP OF NORTH DUMFRIES



SEE PART 90 of Schedule B

Section 20.1.260

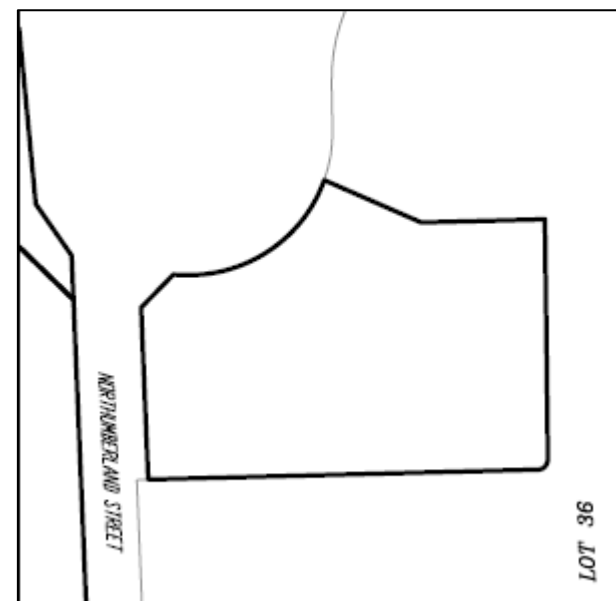
PART OF LOT 15
CONCESSION 11
TOWNSHIP OF NORTH DUMFRIES



SEE PART 76 of Schedule 'B'

SECTION 20.1.261

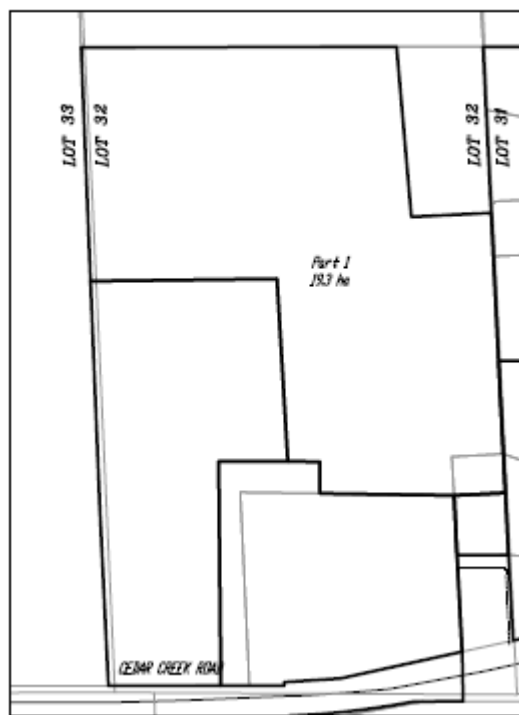
PART OF LOT 36
CONCESSION 9
TOWNSHIP OF NORTH DUMFRIES



SEE PART 61 of Schedule B

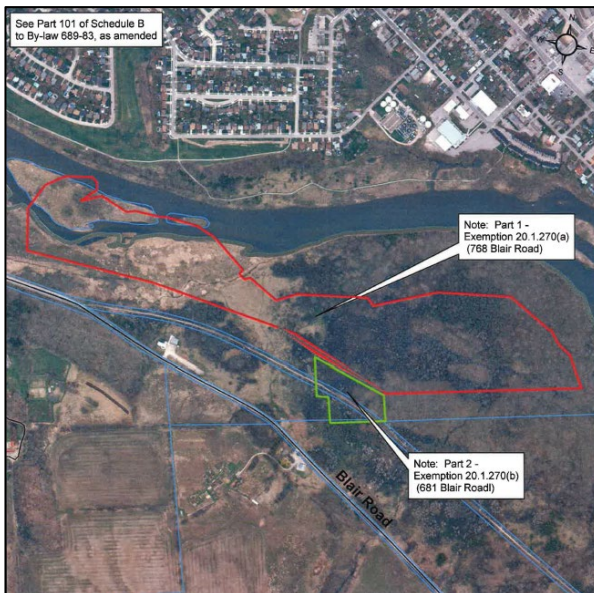
Section 20.1.262

PART OF LOT 32
CONCESSION 11
TOWNSHIP OF NORTH DUMFRIES



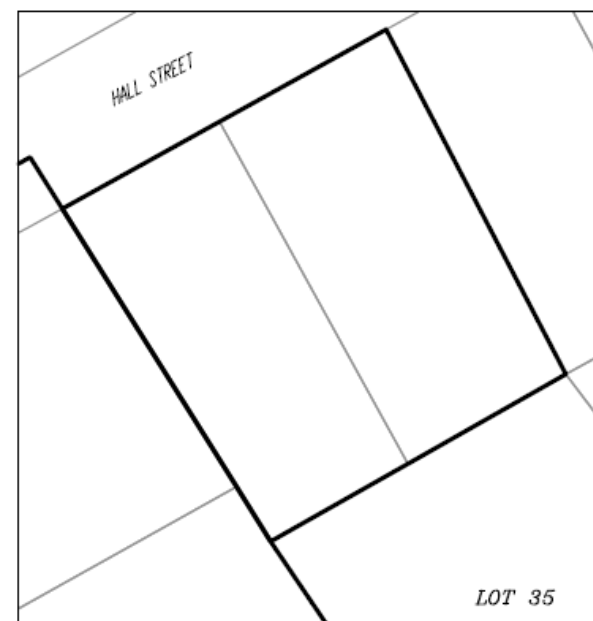
SEE PART 85 of Schedule B Section 20.1.269

PART OF LOT 1 & 17
BESLEY'S OLD SURVEY
TOWNSHIP OF NORTH DUMFRIES



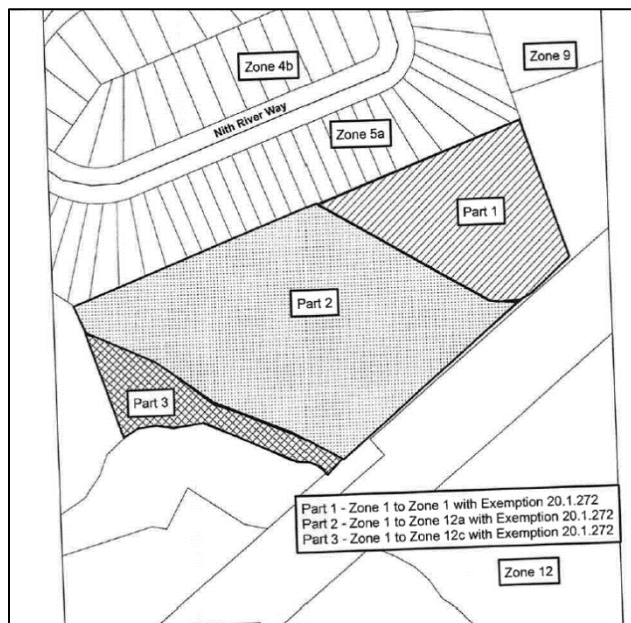
SEE PART 101 on Schedule B Section 20.1.270

ZONING
AYR SETTLEMENT AREA
TOWNSHIP OF NORTH DUMFRIES



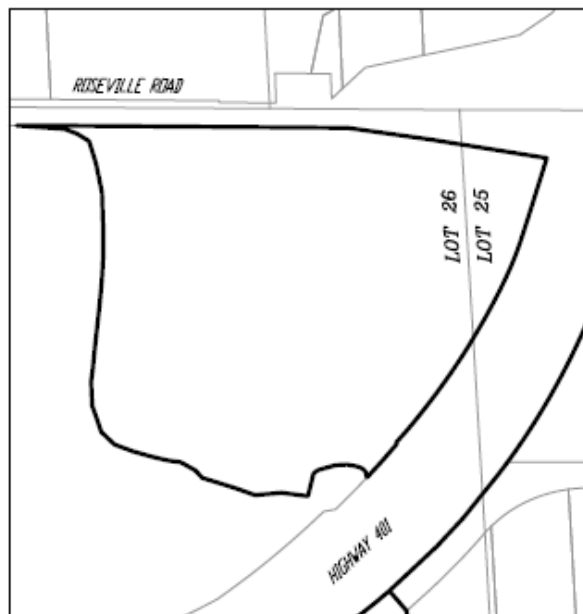
SEE PART 139 of Schedule B Section 20.1.271

PART OF LOT 36
CONCESSION 8
TOWNSHIP OF NORTH DUMFRIES



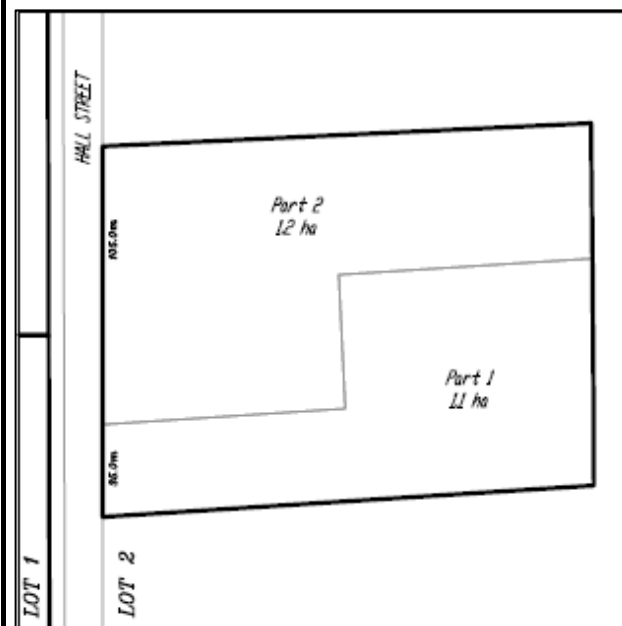
SEE PART 139 of Schedule B Section 20.1.272

PART OF LOT 26
CONCESSION 11
TOWNSHIP OF NORTH DUMFRIES



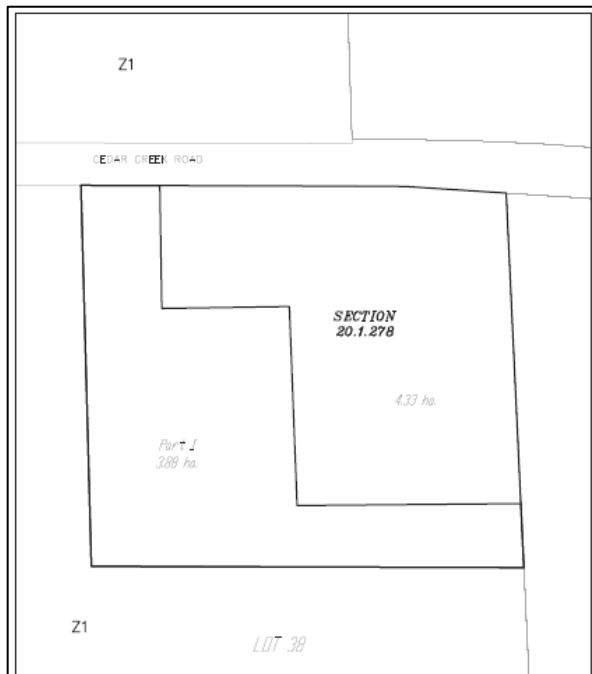
SEE PART 82 on Schedule B Section 20.1.273

PART OF LOT 2
CONCESSION 8
TOWNSHIP OF NORTH DUMFRIES



SEE PART 109 of Schedule B Section 20.1.274

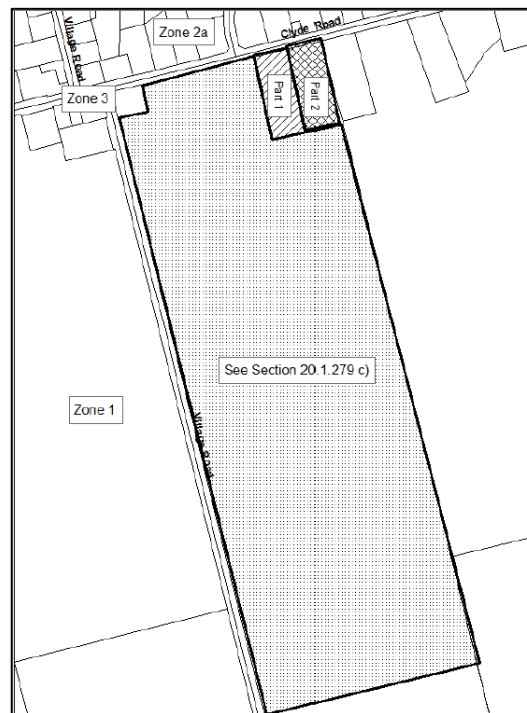
PART OF LOT 38
CONCESSION X
TOWNSHIP OF NORTH DUMFRIES



SEE PART 75 Schedule 'B'

SECTION 20.1.278.

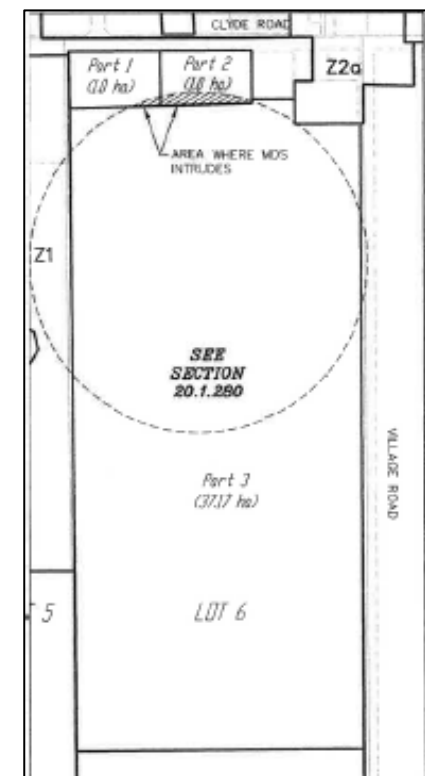
PART OF LOT 7
CONCESSION 9
TOWNSHIP OF NORTH DUMFRIES



SEE PART 130 Schedule 'B'

SECTION 20.1.279.

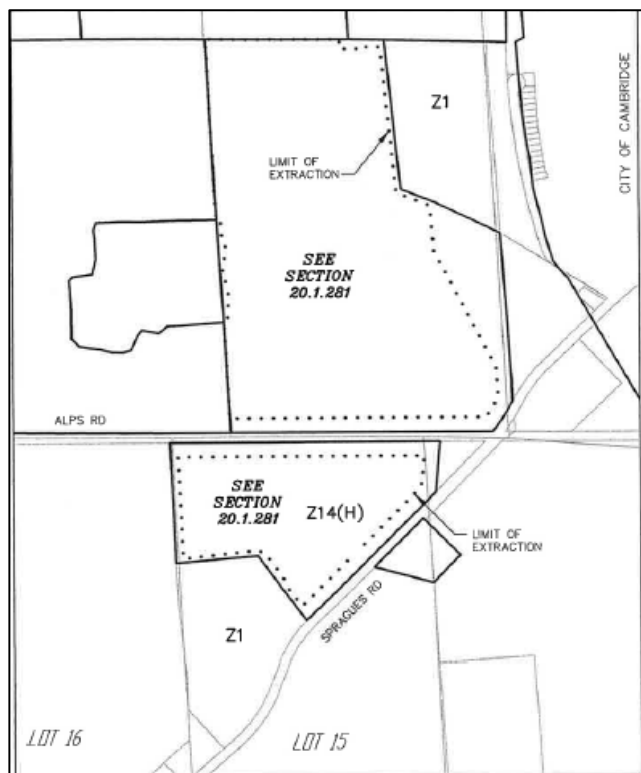
PART OF LOT 6
CONCESSION IX
TOWNSHIP OF NORTH DUMFRIES
(BEVERLY SECTION)



SEE PART 130 Schedule 'B'

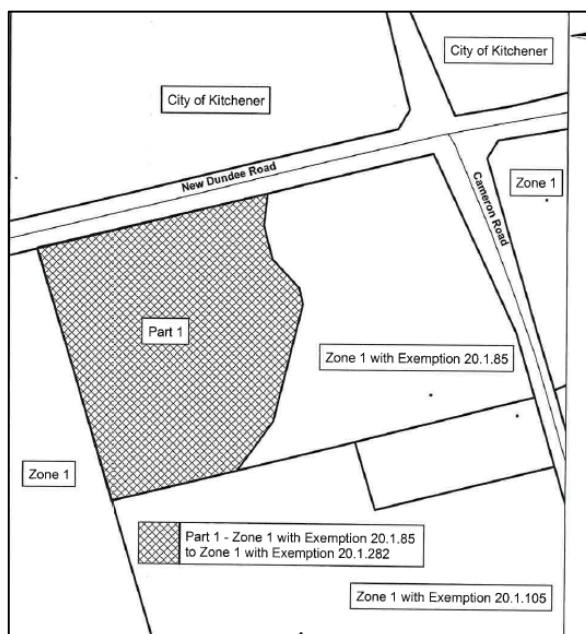
SECTION 20.1.280.

PART LOT 15
CONCESSION 9 & 10
TOWNSHIP OF NORTH DUMFRIES



SEE PARTS 51 & 63 of Schedule B Section 20.1.281

PART LOTS 14, 15 & 16
CONCESSION 9
TOWNSHIP OF NORTH DUMFRIES



SEE PARTS 95 of Schedule B Section 20.1.281

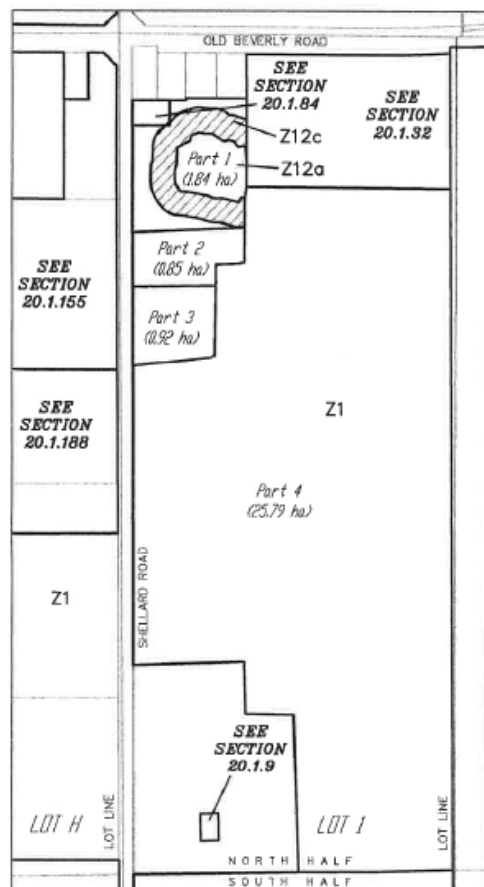
PART LOTS 14 & 15
CONCESSION 10
TOWNSHIP OF NORTH DUMFRIES



Application Pending

SEE PART 51 & 63 of Schedule B Section 20.1.283

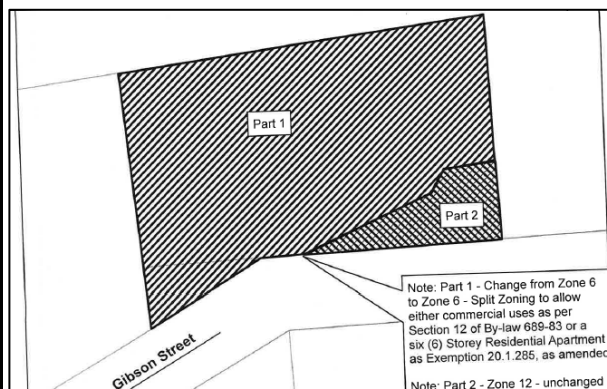
PART OF LOTS H & I
CONCESSION 8
TOWNSHIP OF NORTH DUMFRIES
(BEVERLY SECTION)



SEE PART 115 of Schedule B

Section 20.1.284

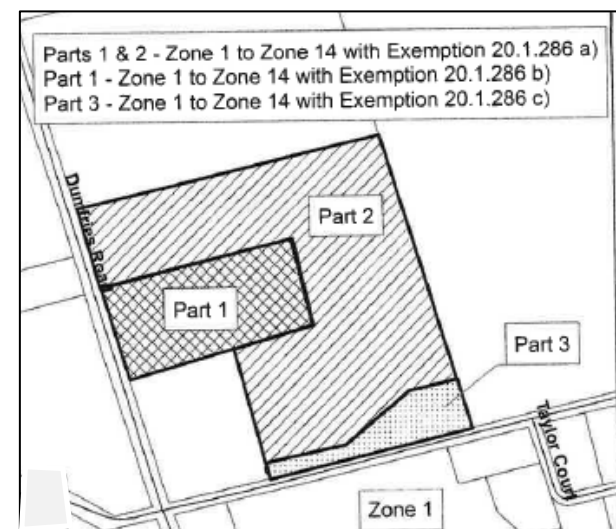
PART OF LOT 51 & 52
PLAN 673
TOWNSHIP OF NORTH DUMFRIES



SEE PART 139 on Schedule B

Section 20.1.285

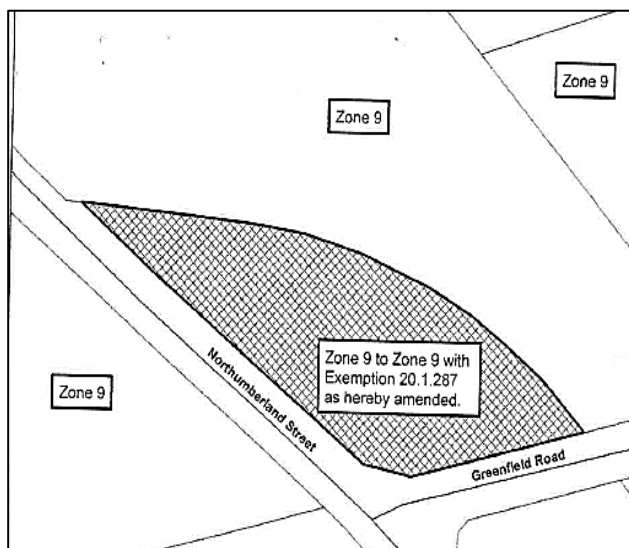
PART OF LOT 24
CONCESSION 9
TOWNSHIP OF NORTH DUMFRIES



SEE PART 55 of Schedule B

Section 20.1.286

PART OF LOTS 35 & 36
CONCESSION 9
TOWNSHIP OF NORTH DUMFRIES



SEE PART 61 of Schedule B

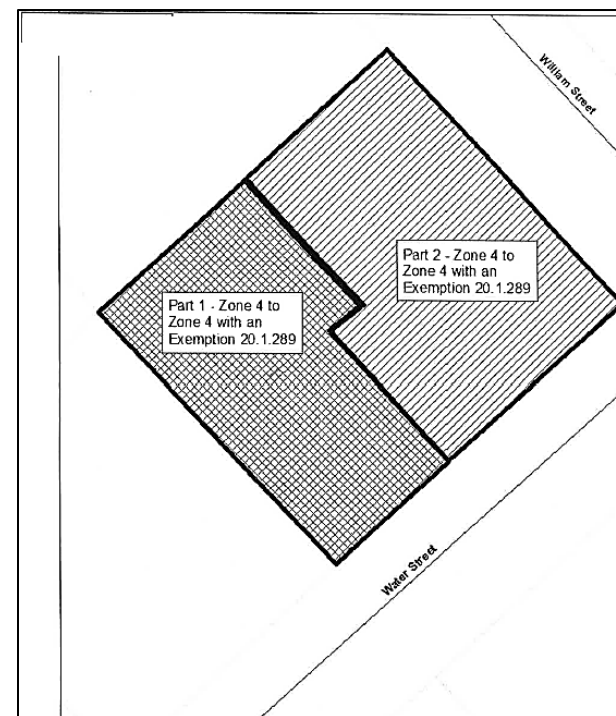
Section 20.1.287

APPLICATION PENDING

SEE PART ** on Schedule B

Section 20.1.288

PART OF LOT 5 & 6
AYR SETTLEMENT AREA
TOWNSHIP OF NORTH DUMFRIES



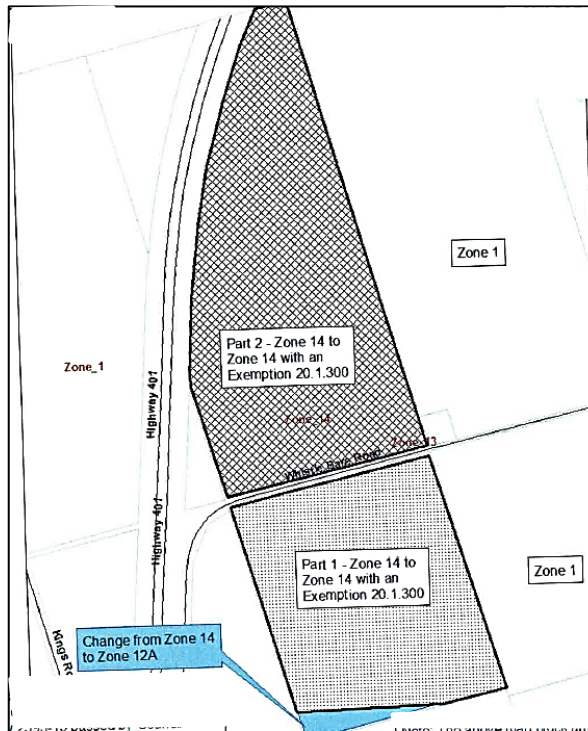
SEE PART 139 of Schedule B

Section 20.1.289

APPLICATION PENDING

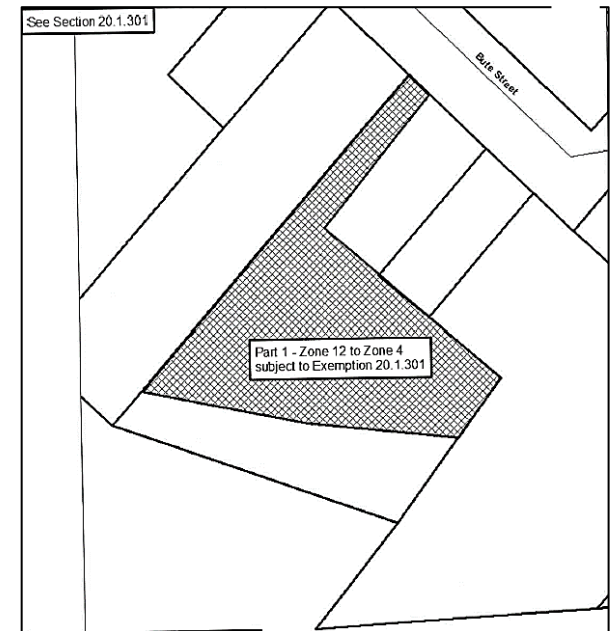
SEE PART ** Schedule 'B' SECTION 20.1.299.

PART OF LOT 29
CONCESSION 12
TOWNSHIP OF NORTH DUMFRIES



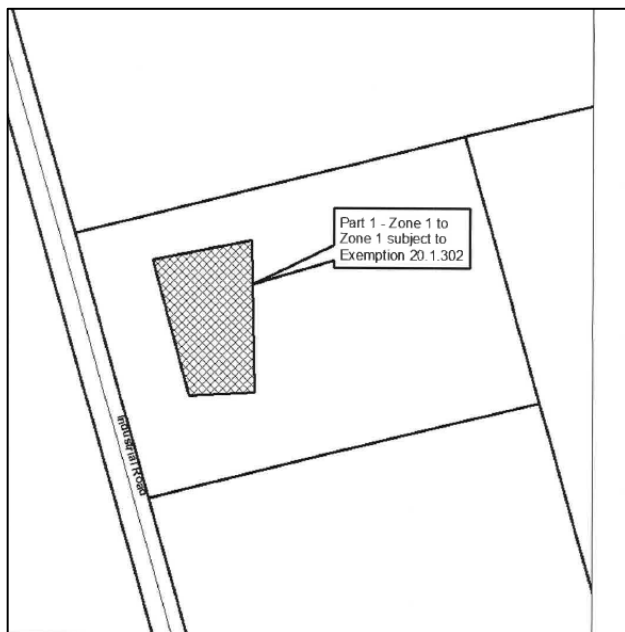
SEE PARTS 92/93 Schedule 'B' Section 20.1.300.

PART OF LOT 10
PLAN 679
TOWNSHIP OF NORTH DUMFRIES



SEE PART 139 Schedule 'B' SECTION 20.1.301.

PART OF LOTS 30
CONCESSION 11
TOWNSHIP OF NORTH DUMFRIES



SEE PART 84 of Schedule B

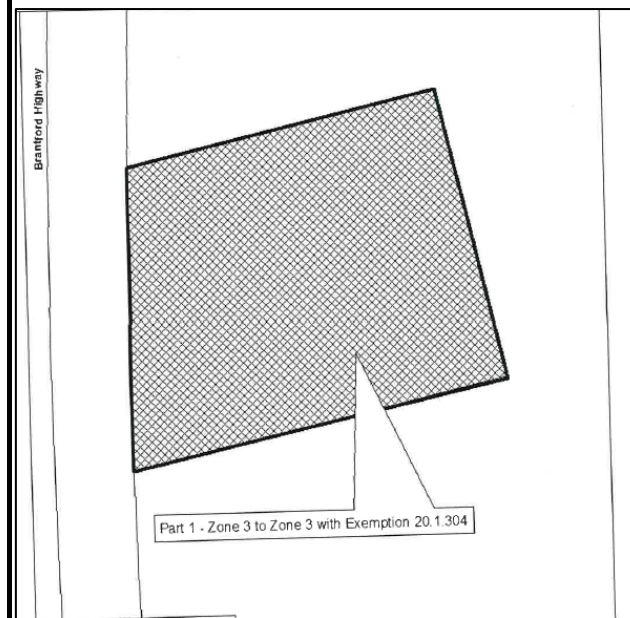
Section 20.1.302

APPLICATION PENDING

SEE PART ** on Schedule B

Section 20.1.303

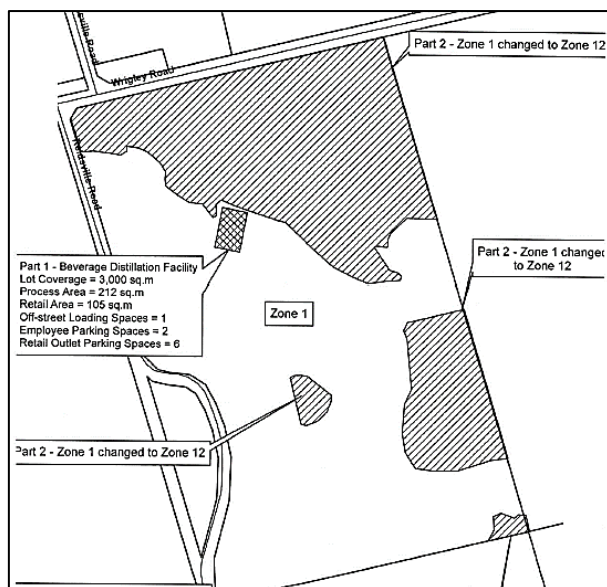
SUBDIVISION LOT 1 & 2
CONCESSION 9
TOWNSHIP OF NORTH DUMFRIES



SEE PART 48 of Schedule B

Section 20.1.304

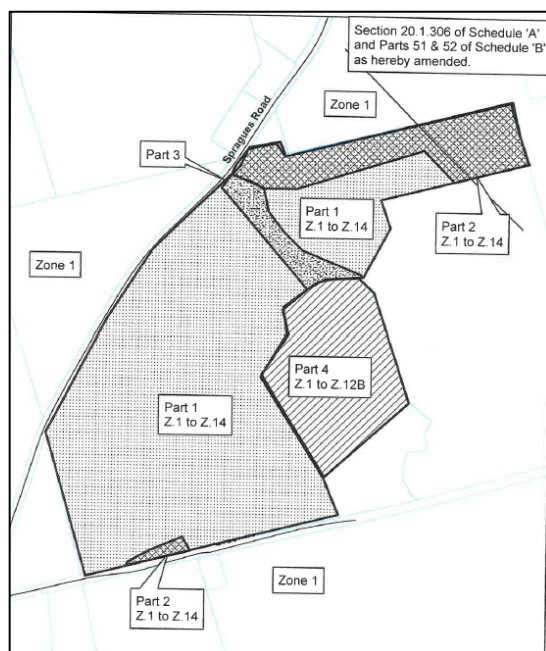
PART LOT 30
CONCESSION 7
TOWNSHIP OF NORTH DUMFRIES



SEE PART 17 of Schedule B

Section 20.1.305

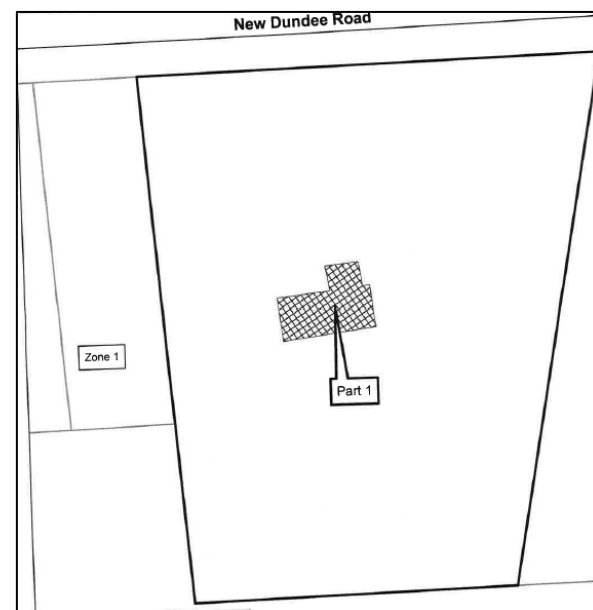
PART LOTS 15-17
CONCESSION 9
TOWNSHIP OF NORTH DUMFRIES



SEE PART 51/52 on Schedule B

Section 20.1.306

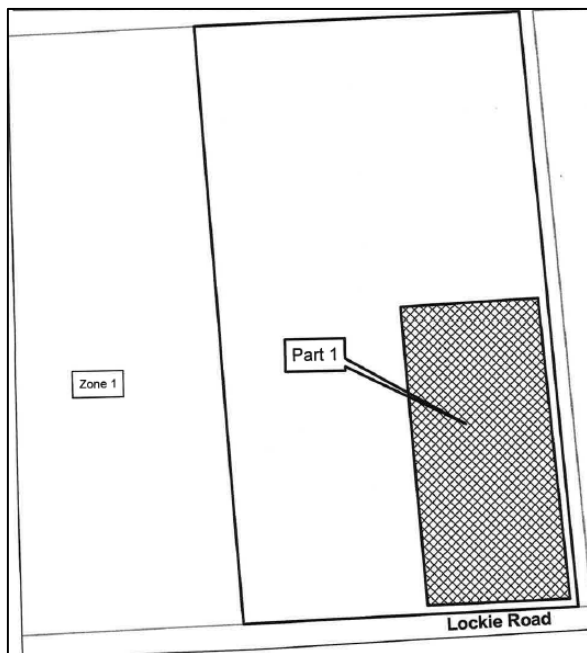
PART LOT 30
CONCESSION 11
TOWNSHIP OF NORTH DUMFRIES



SEE PART 94 of Schedule B

Section 20.1.307

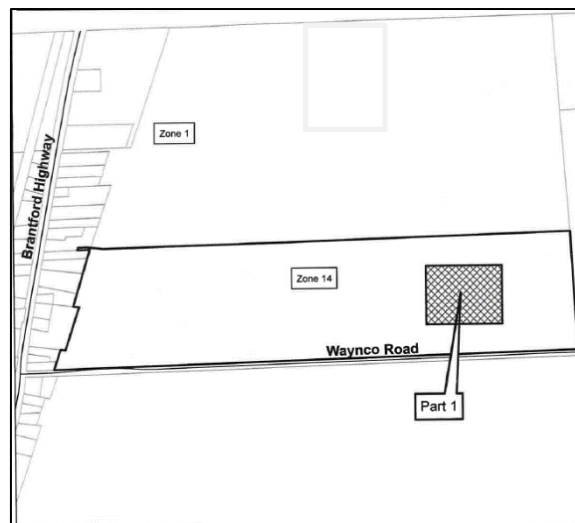
PART OF LOT 1
CONCESSION 7
TOWNSHIP OF NORTH DUMFRIES



SEE PART 5 of Schedule B

Section 20.1.308

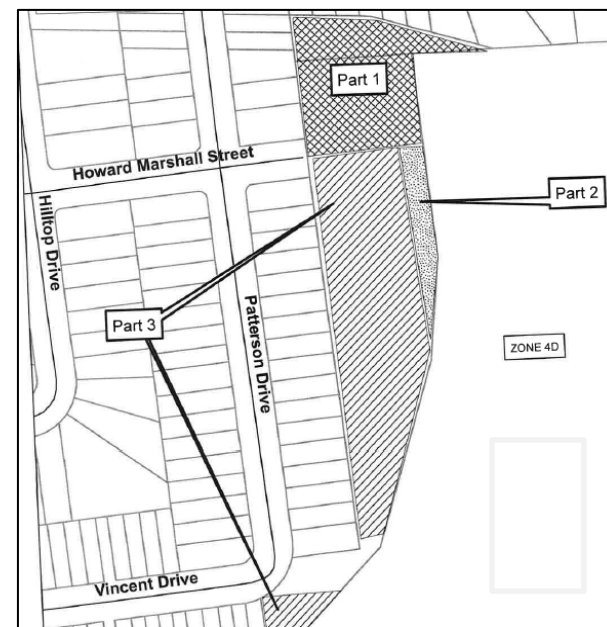
PART OF LOT 1
CONCESSION 9
TOWNSHIP OF NORTH DUMFRIES



SEE PART 47 on Schedule B

Section 20.1.309

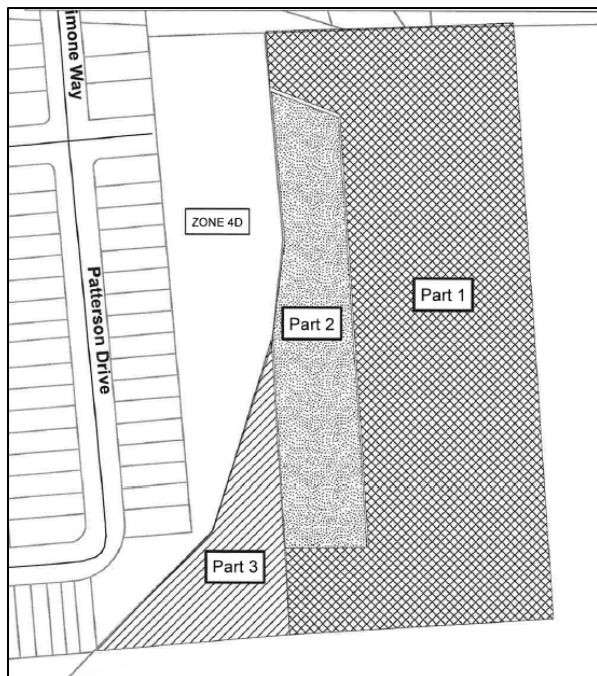
PART OF LOT 33
CONCESSION 7
TOWNSHIP OF NORTH DUMFRIES



SEE PART 139 of Schedule B

Section 20.1.310

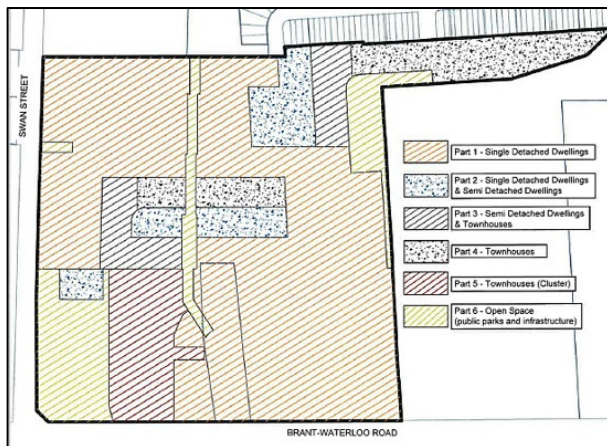
PART OF LOT 32 & 33
CONCESSION 7
TOWNSHIP OF NORTH DUMFRIES



SEE PART 139 of Schedule B

Section 20.1.311

PART OF LOT 33 & 34
CONCESSION 7
TOWNSHIP OF NORTH DUMFRIES



SEE PART 139 on Schedule B

Section 20.1.312



APPLICATION PENDING

SEE PART 139 of Schedule B

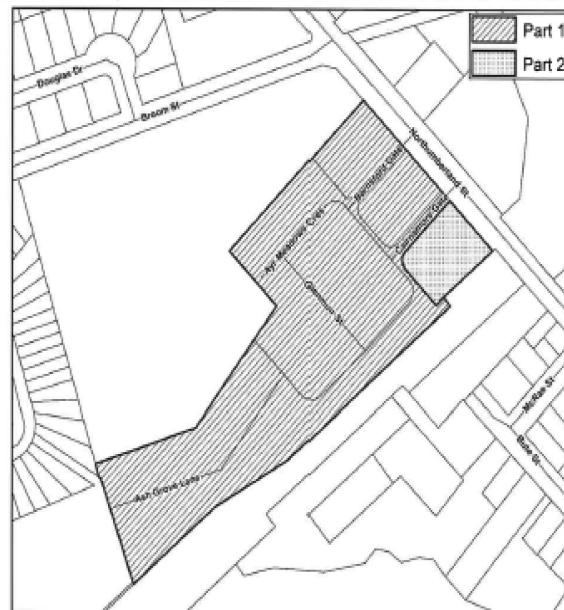
Section 20.1.313

APPLICATION PENDING

SEE PART ** of Schedule B

Section 20.1.314

Section 20.1.315 of Schedule A (Replacement)
By-law No. 3361-22 hereby removes the Holding (H) symbol
for a portion of the lands to allow the construction of a
commercial building at 160 Northumberland Street, Ayr



 **Part 1** : Zone Z.4d (Residential) with Exemption 20.1.315
 **Part 2** : Zone Z.6 (Commercial) with Exemption 20.1.315

This is an excerpt of Schedule 'A' and
Part 139 of Schedule 'B' forming part
of By-law 3361-22 passed by Council
this 7th day of November 2022.

Section 20.1.315 of Schedule 'A'
and Part 139 of Schedule 'B' as
herby amended. Note: This map
block is only part of By-law 3361-
22

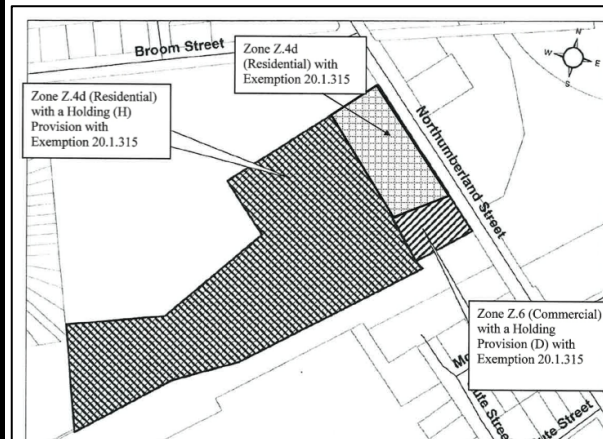
50 BUTE STREET
AYR
TOWNSHIP OF NORTH DUMFRIES



SEE PART 139 of Schedule B

Section 20.1.316

PART OF LOTS 26
CONCESSION 8
TOWNSHIP OF NORTH DUMFRIES



APPLICATION PENDING

SEE PART ** of Schedule B

Section 20.1.314

SEE PART 139 of Schedule B

Section 20.1.315

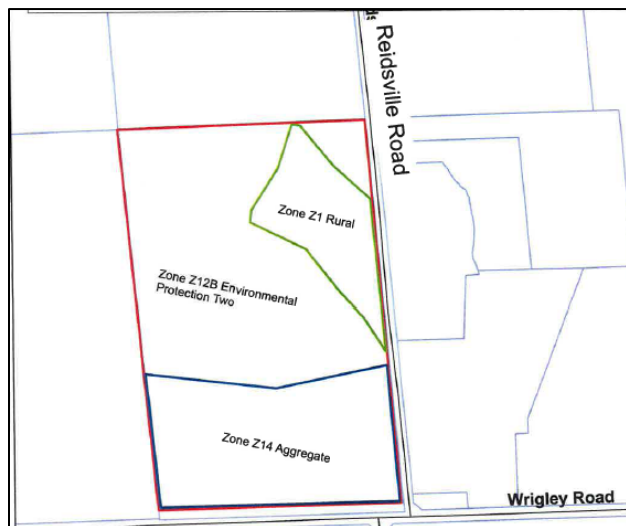
50 BUTE STREET
AYR
TOWNSHIP OF NORTH DUMFRIES



SEE PART 139 of Schedule B

Section 20.1.316

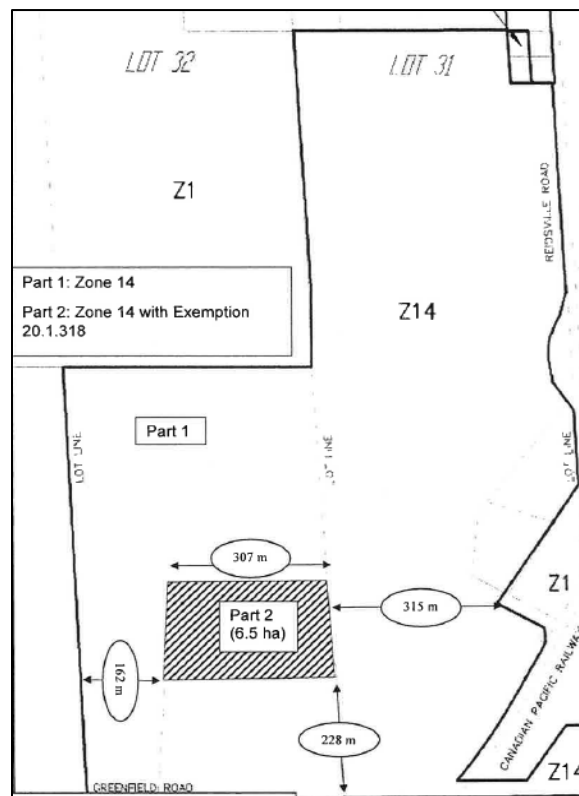
PART OF LOT 31
CONCESSION 8
TOWNSHIP OF NORTH DUMFRIES



SEE PART 40 of Schedule B

Section 20.1.317

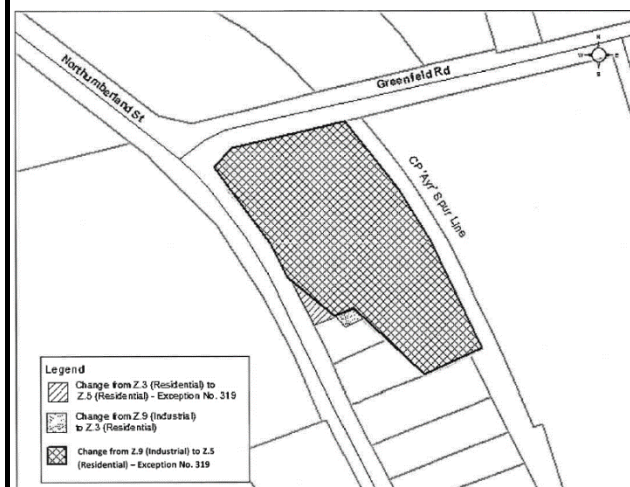
PART OF LOT 31 & 32
CONCESSION 9
TOWNSHIP OF NORTH DUMFRIES



SEE PART 59 on Schedule B

Section 20.1.318

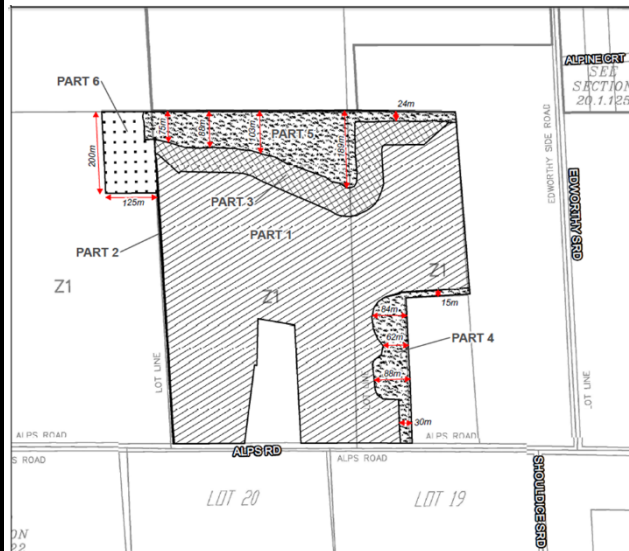
PART OF LOTS 35 & 36
CONCESSION 8
TOWNSHIP OF NORTH DUMFRIES



SEE PART 139 of Schedule B

Section 20.1.319

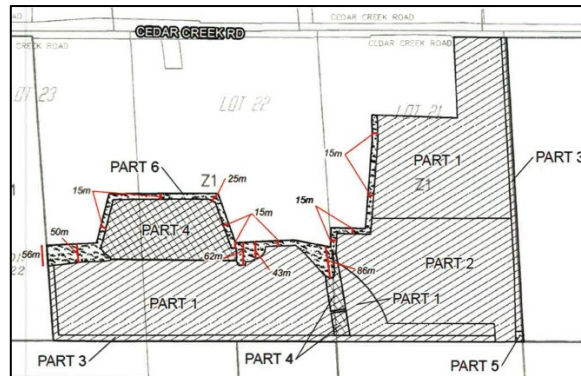
1568 ALPS ROAD
(ZC-04/16)



- Lands to be rezoned from Zone 1 (Z.1) to Zone 14 Exception (Z.14 Exception 20.1.____)
- Lands to be rezoned from Zone 1 (Z.1) to Zone 1 Exception (Z.1 Exception 20.1.____)
- Lands to be rezoned from Zone 1 (Z.1) to Zone 12B Exception (Z.12B Exception 20.1.____)
- Lands to be rezoned from Zone 1 (Z.1) to Zone 14 Exception (Z.14 Exception 20.1.____)
- This area includes an additional provision the requires Part 3 to be rezoned Zone 12B (Z.12B) once the ARA Licence is surrendered. This is Schedule 'A' to Zoning By-law ____ Passed this ____ day of ____, 2017

Section 20.1.320

PART OF LOTS 21-23
CONCESSION 10
TOWNSHIP OF NORTH DUMFRIES

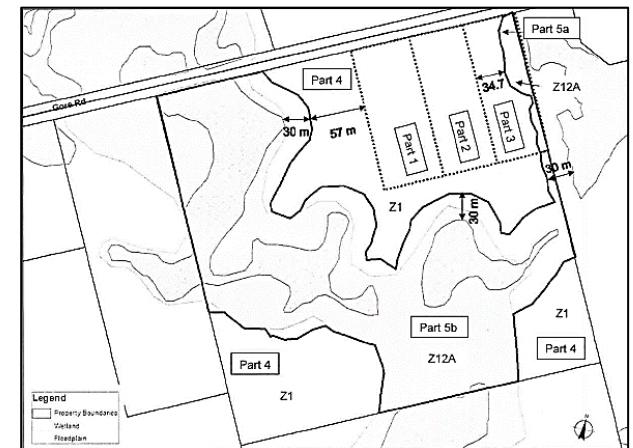


- Lands to be rezoned from Zone 1 (Z.1) to Zone 14 Exception
- Lands to be rezoned from Zone 1 (Z.1) to Zone 12B Exception
- Lands to be rezoned from Zone 1 (Z.1) to Zone 14 Exception
This area includes an additional provision the requires Part 4 to be rezoned Zone 12B (Z.12B) once the ARA Licence is surrendered.

SEE PARTS 66, 67 of Schedule B

Section 20.1.321

PART OF LOTS 35 & 36
CONCESSION 8
TOWNSHIP OF NORTH DUMFRIES

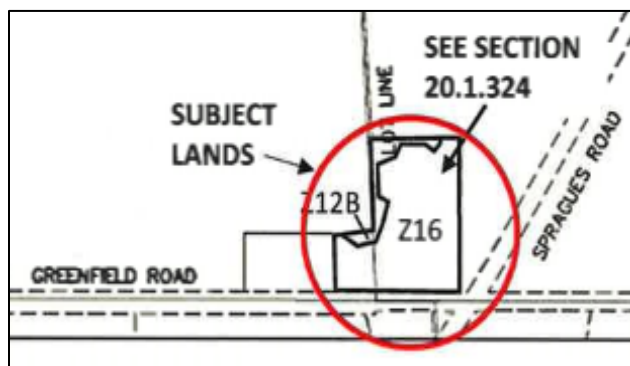


- Property Boundaries
- Violated
- Exception

SEE PART 138 of Schedule B

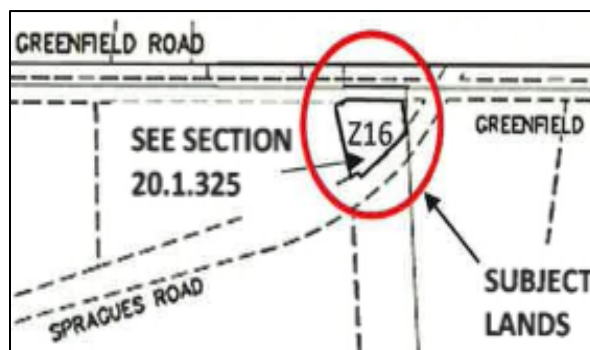
Section 20.1.323

PART OF LOTS 17 AND 18
CONCESSION 9
TOWNSHIP OF NORTH DUMFRIES



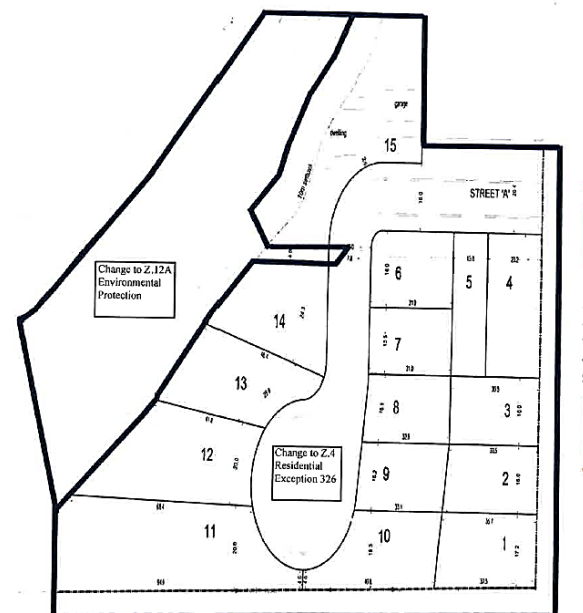
SEE PART 52 of Schedule B Section 20.1.324

PART OF LOTS 17 AND 18
CONCESSION 8
TOWNSHIP OF NORTH DUMFRIES



SEE PART 33 on Schedule B Section 20.1.325

PART OF LOT 36
CONCESSION 8
AYR, TOWNSHIP OF NORTH DUMFRIES



SEE PART 139 on Schedule B Section 20.1.326

PART OF LOT 33, CONCESSION 7, RP-18691,
PARTS 1 AND 2
(30T- 18301 & ZC-01/18))



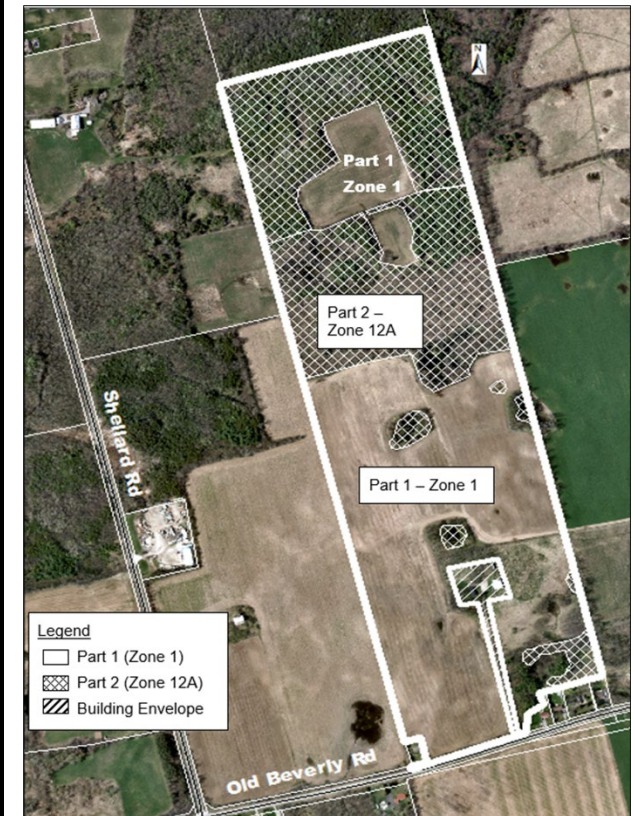
SECTION 20.1.327

1578 ROSEVILLE ROAD
(ZC-01/19)



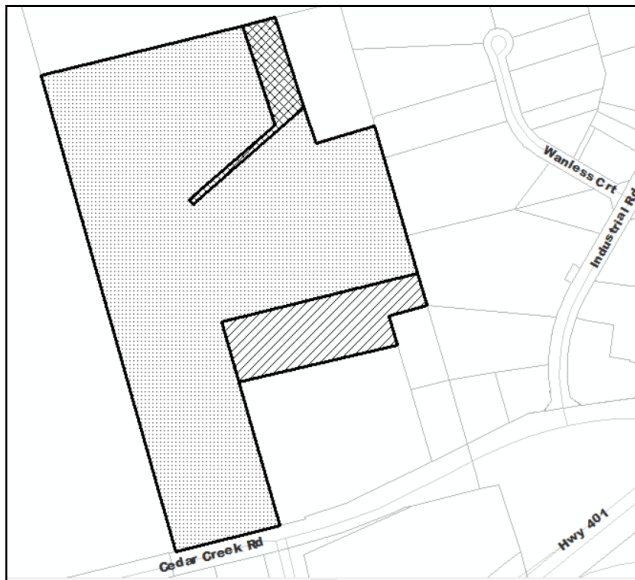
SECTION 20.1.328

3238 OLD BEVERLY ROAD
(ZC-02/19)



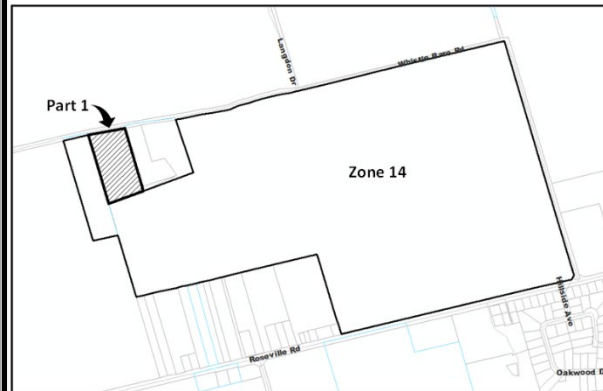
SECTION 20.1.329

PART OF LOT 32, CONCESSION 11
(2852 CEDAR CREEK ROAD)
(30T- 20302 & ZC-05/20)



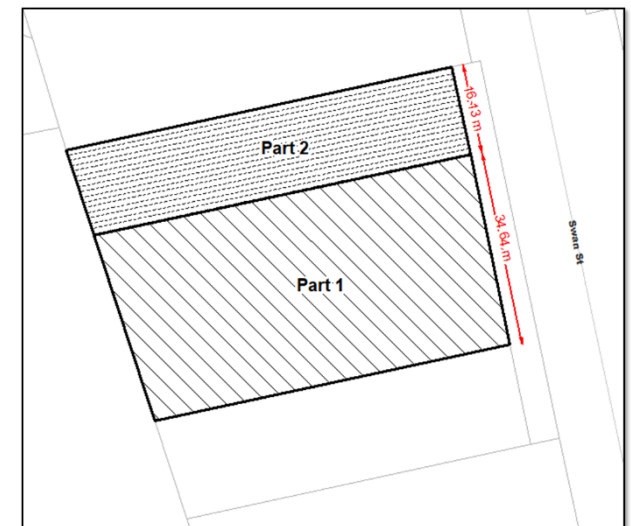
SECTION 20.1.329

1453-1501 WHISTLE BARE ROAD
(ZC-09/20)



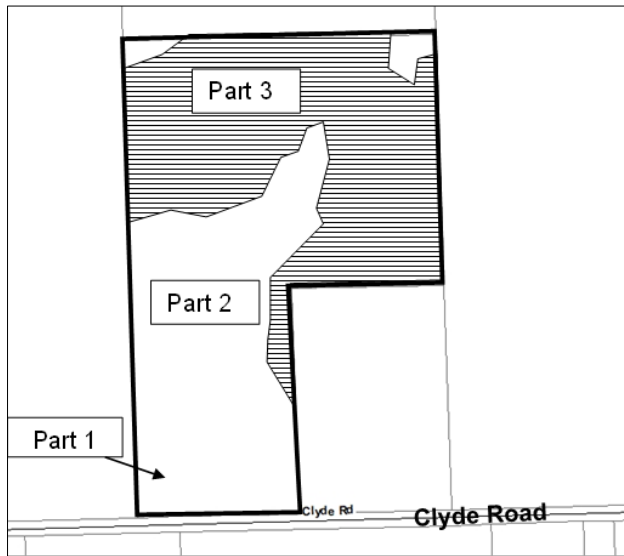
SECTION 20.1.330

1154 SWAN STREET
(ZC-08/20)



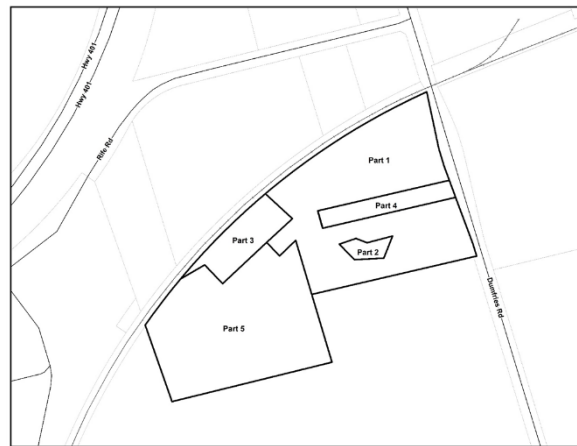
SECTION 20.1.331

1904 CLYDE ROAD
(ZC-02/21)



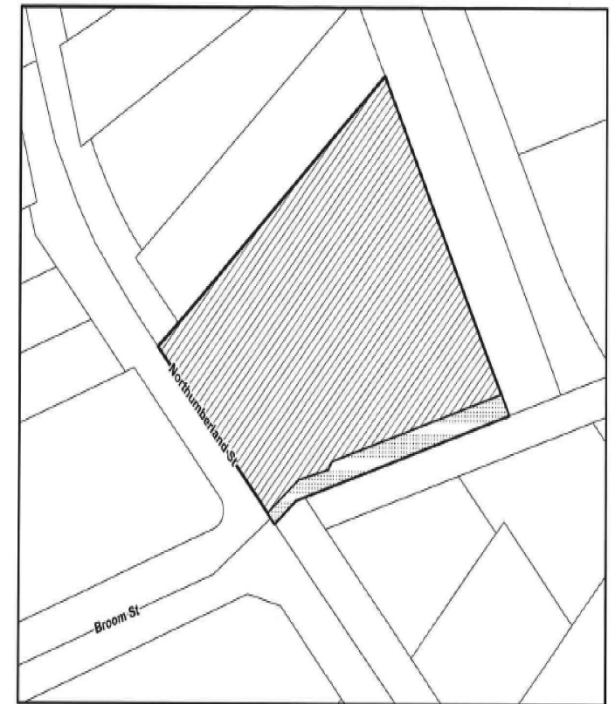
SECTION 20.1.332

PART LOTS 25 AND 26 11
(ROCKLAND ROAD)
(ZC-01/24)



SECTION 20.1.333

197-211 NORTHUMBERLAND STREET
(ZC-05/21)



SECTION 20.1.334

1662 ALPS ROAD
(ZC-03/20)

Part 4

Part 5

Part 3

Part 2

Part 1

Part 6

Part 7

Z1

ALPS ROAD

LOT LINE

LOT LINE

ALPS R

This is an Excerpt of Parts 65 and 66 of Schedule B forming part of By-law 2136-23 passed by Council this 5th day of October, 2023

LOT 20

SECTION 20.1.335

1120 SHEFFIELD ROAD
(ZC-03/23)

The map shows a property divided into three parts. Part 1 and Part 2 are small rectangular lots. Part 3 is a larger lot with a cross-hatched area labeled 'Change to Z.12C (Environmental Protection Overlay)' and a diagonal-hatched area labeled 'Area of Operations'. The map includes labels for 'Morrison Rd' and '1120 Sheffield Rd'.

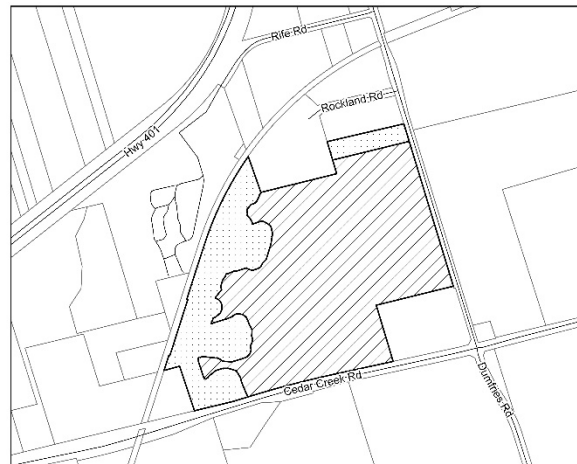
SECTION 20.1.336



REGISTERED PLAN 1445, BLOCK 66
(ZC-02/23)



SECTION 20.1.338

PART OF LOTS 25 AND 26, CONCESSION 11
(ZC-07/20)



-  Amend to Zone Z.9 (Industrial), Exemption 20.1.339
-  Amend to Zone Z.12a (Environmental Protection 1)

SECTION 20.1.339