

**SUPPLEMENTARY DOCUMENTATION
Stage 1-2 Archaeological Assessment
Whistle Bare Campground
1898 Whistle Bare Road**

Part of Lot 28, Concession 12,
Geographic Township of North Dumfries,
Historical Waterloo County now Region of Waterloo

Submitted to:

GSP Group Inc.
72 Victoria Street South, Suite 201
Kitchener ON N2G 4Y9

and the

Ontario's Ministry of Heritage, Sport, Tourism and Culture Industries

Submitted by:



Detritus
CONSULTING LTD.
archaeology · heritage

69 Claremont Avenue,
Kitchener Ontario, N2M 2P5
Mobile/Office: 519-744-7018
e-mail: garth@golden.net www.detcon.net

Licensee: Walter McCall
License Number: P389
PIF Number: P389-0446-2019
CP Number: 2019-166

ORIGINAL SUPPLEMENTARY DOCUMENTATION

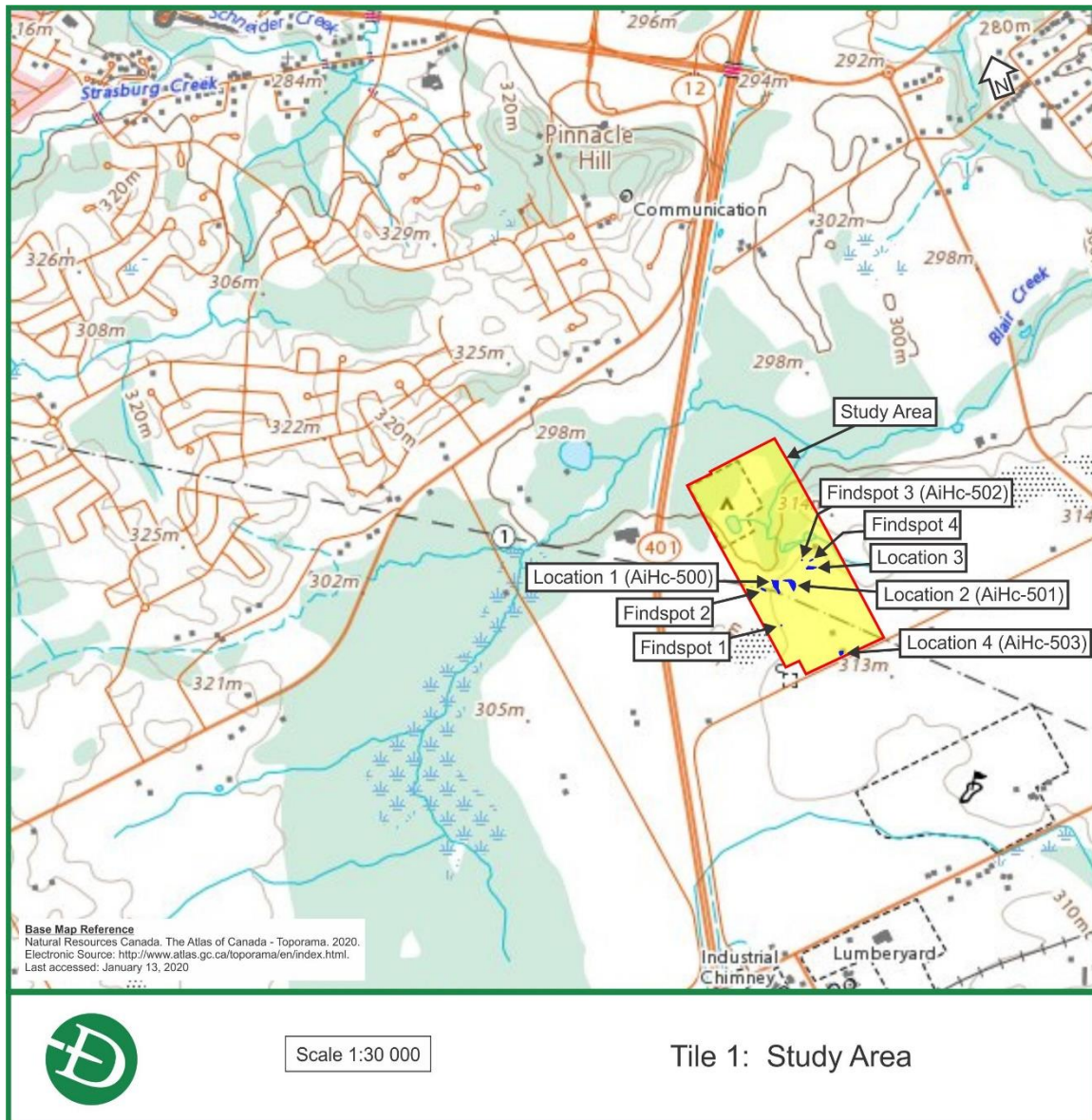
January 31, 2020

Table of Contents

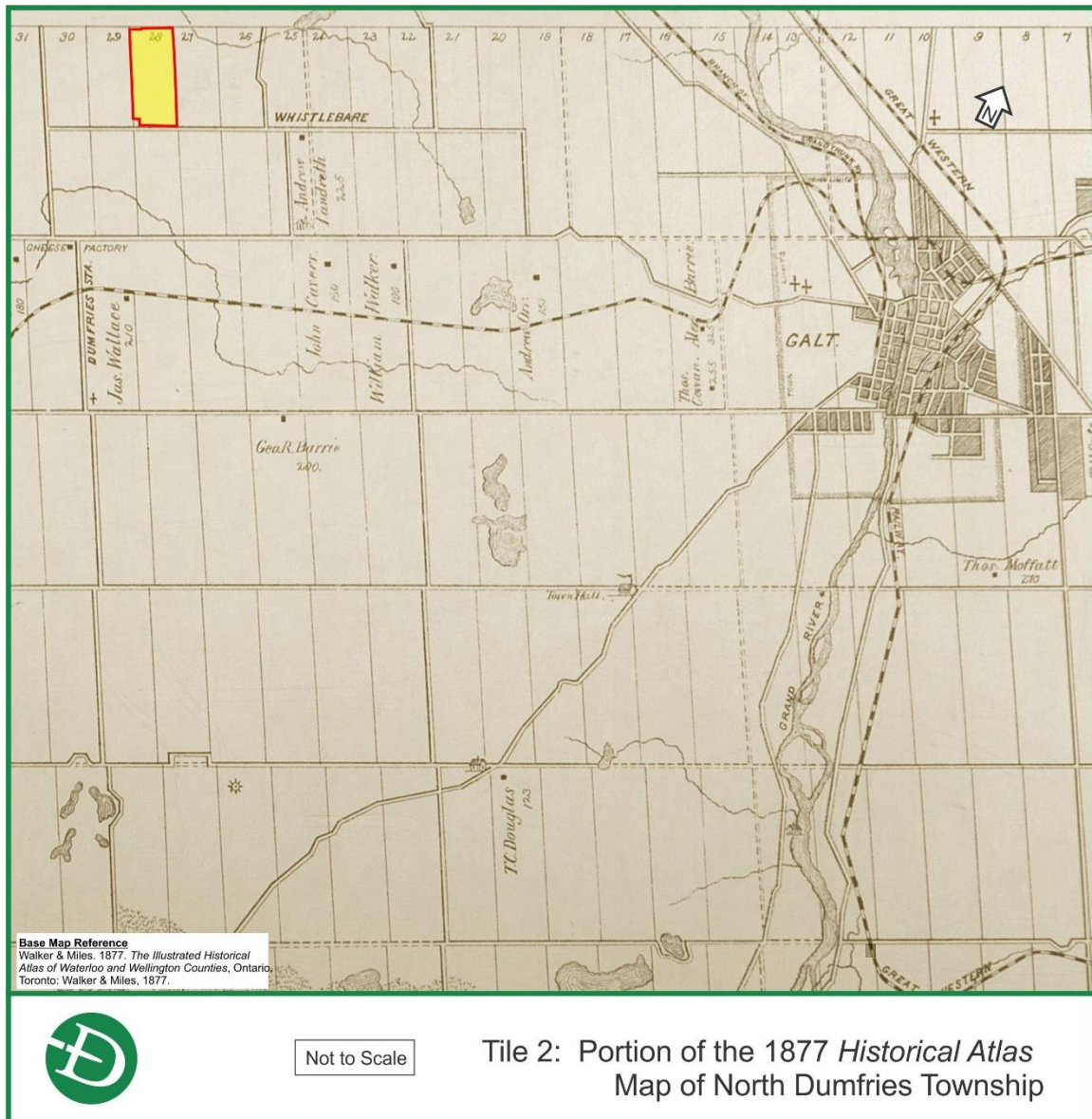
1.0 Maps..... 3

2.0 Universal Transverse Mercator Coordinates 9

1.0 Maps



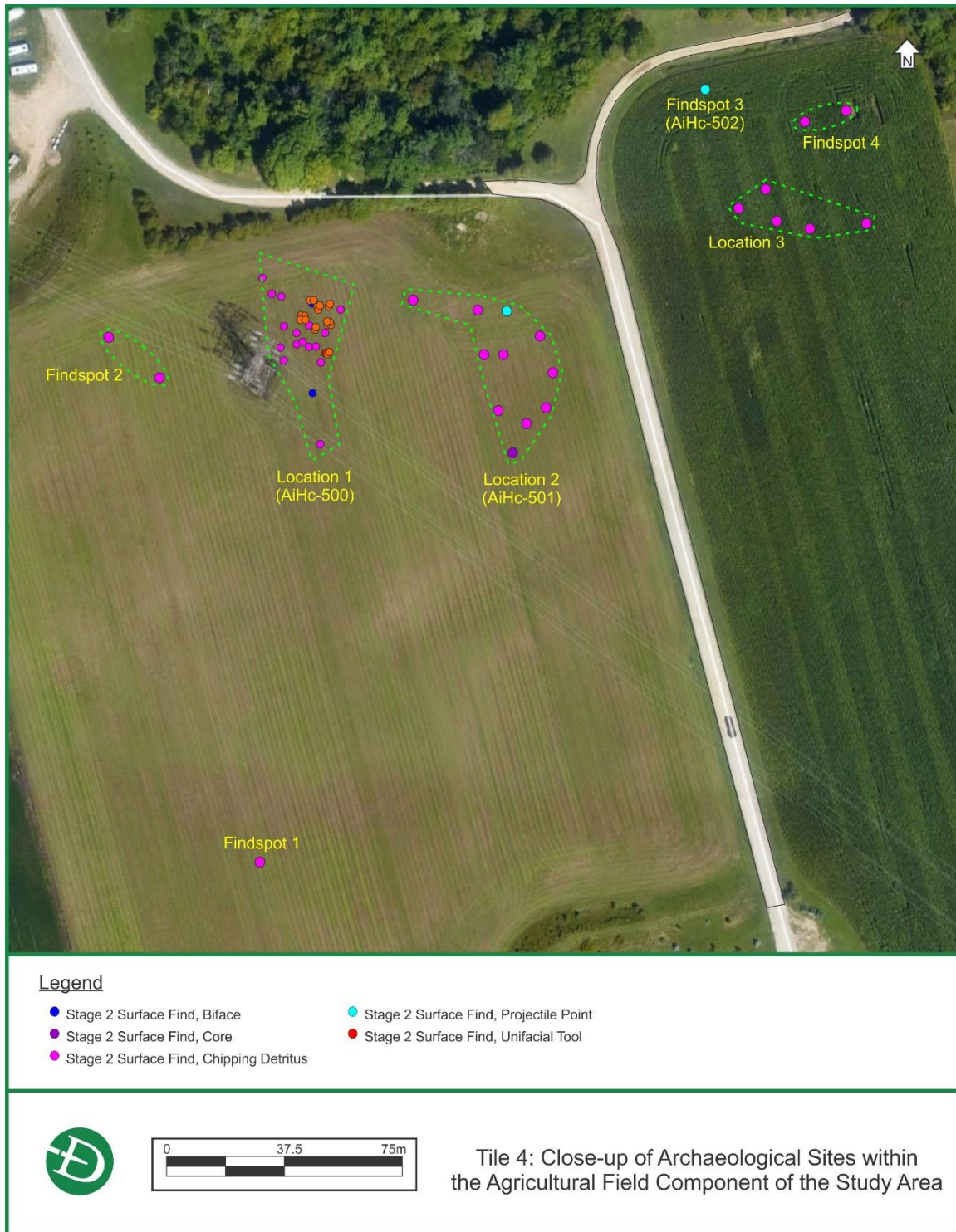
Stage 1-2 Archaeological Assessment, Whistle Bare Campground, 1898 Whistle Bare Road, North Dumfries



Stage 1-2 Archaeological Assessment, Whistle Bare Campground, 1898 Whistle Bare Road, North Dumfries



Stage 1-2 Archaeological Assessment, Whistle Bare Campground, 1898 Whistle Bare Road, North Dumfries

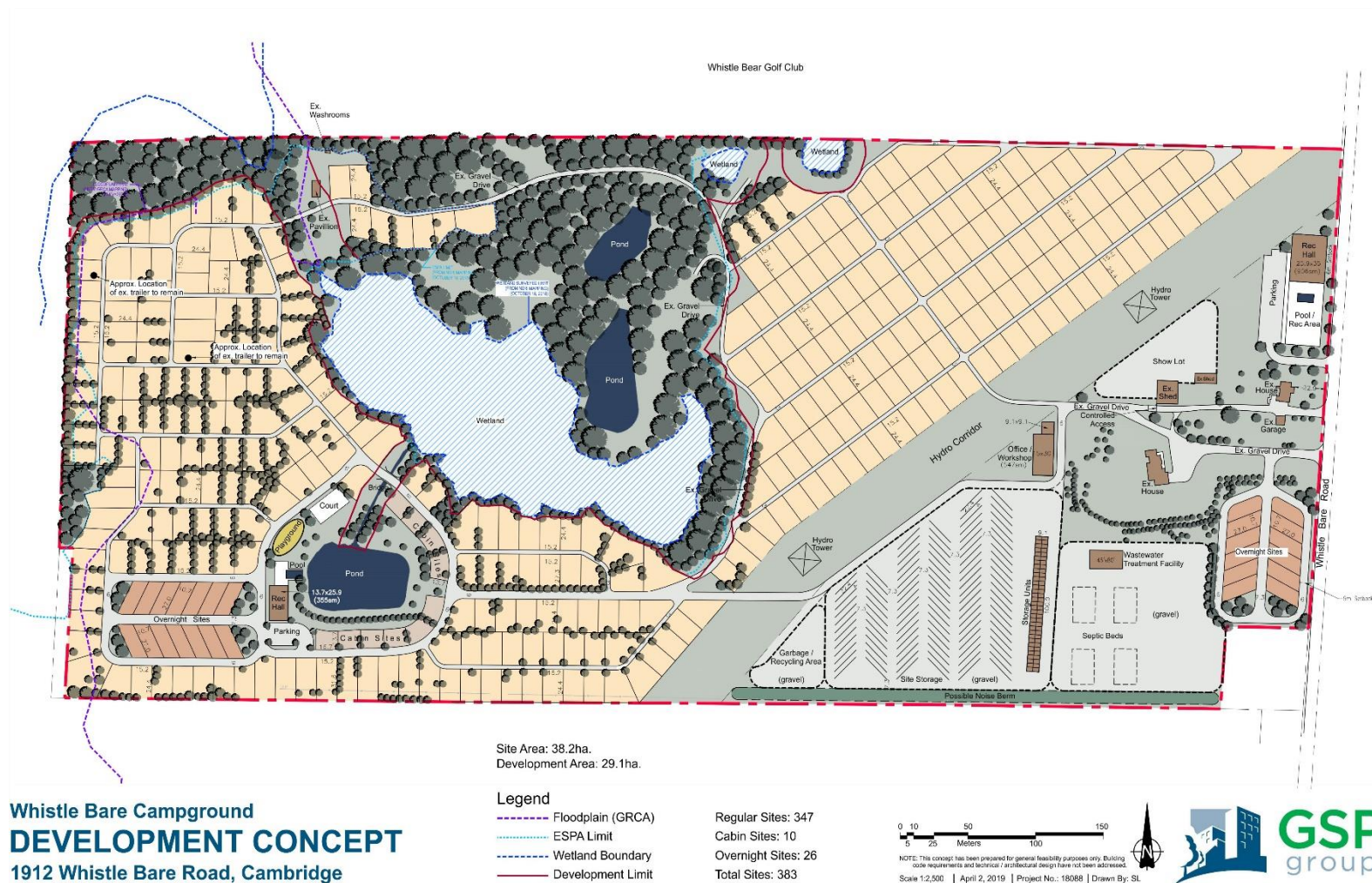


Stage 1-2 Archaeological Assessment, Whistle Bare Campground, 1898 Whistle Bare Road, North Dumfries



Stage 1-2 Archaeological Assessment, Whistle Bare Campground, 1898 Whistle Bare Road, North Dumfries

Tile 6: Development Map



2.0 Universal Transverse Mercator Coordinates

The Universal Transverse Mercator ('UTM') coordinates recorded during the Stage 2 assessment are provided below. The UTM coordinates were recorded using a Garmin eTrex 10 GPS unit with a minimum accuracy 1-2.5m (North American Datum 1983 ('NAD83') and UTM Zone 17T. The UTM coordinates for each site are presented in the following table. Tiles 3 to 5 demonstrate the individual findspots that were recovered in the field at each location/findspot.

Site	Context	Position
Location 1 (AiHc-500)	Surface Find 11	17T 0547893mE 4801602mN
Location 1 (AiHc-500)	Surface Find 12	17T 0547890mE 4801596mN
Location 1 (AiHc-500)	Surface Find 13	17T 0547891mE 4801603mN
Location 1 (AiHc-500)	Surface Find 14 (North)	17T 0547875mE 4801611mN
Location 1 (AiHc-500)	Surface Find 17 (South)	17T 0547894mE 4801558mN
Location 1 (AiHc-500)	Surface Find 20	17T 0547888mE 4801598mN
Location 1 (AiHc-500)	Surface Find 21	17T 0547892mE 4801595mN
Location 1 (AiHc-500)	Surface Find 22	17T 0547886mE 4801594mN
Location 1 (AiHc-500)	Surface Find 23	17T 0547882mE 4801596mN
Location 1 (AiHc-500)	Surface Find 24	17T 0547886mE 4801590mN
Location 1 (AiHc-500)	Surface Find 25	17T 0547881mE 4801589mN
Location 1 (AiHc-500)	Surface Find 26	17T 0547878mE 4801606mN
Location 1 (AiHc-500)	Surface Find 27	17T 0547881mE 4801605mN
Location 1 (AiHc-500)	Surface Find 28	17T 0547895mE 4801594mN
Location 1 (AiHc-500)	Surface Find 29	17T 0547896mE 4801596mN
Location 1 (AiHc-500)	Surface Find 30	17T 0547896mE 4801602mN
Location 1 (AiHc-500)	Surface Find 31 (East)	17T 0547900mE 4801601mN
Location 1 (AiHc-500)	Surface Find 32	17T 0547896mE 4801586mN
Location 1 (AiHc-500)	Surface Find 33	17T 0547895mE 4801586mN
Location 1 (AiHc-500)	Surface Find 34	17T 0547894mE 4801584mN
Location 1 (AiHc-500)	Surface Find 35	17T 0547892mE 4801589mN
Location 1 (AiHc-500)	Surface Find 36 (Centre)	17T 0547888mE 4801591mN
Location 1 (AiHc-500)	Surface Find 37	17T 0547890mE 4801589mN
Location 1 (AiHc-500)	Surface Find 38 (West)	17T 0547882mE 4801585mN
Location 1 (AiHc-500)	Surface Find 39	17T 0547891mE 4801575mN
Location 2 (AiHc-501)	Surface Find 1	17T 0547953mE 4801601mN
Location 2 (AiHc-501)	Surface Find 10 (Northwest)	17T 0547923mE 4801605mN
Location 2 (AiHc-501)	Surface Find 19 (Southeast)	17T 0547966mE 4801570mN
Location 2 (AiHc-501)	Surface Find 2	17T 0547946mE 4801587mN
Location 2 (AiHc-501)	Surface Find 3	17T 0547968mE 4801581mN
Location 2 (AiHc-501)	Surface Find 4	17T 0547944mE 4801601mN
Location 2 (AiHc-501)	Surface Find 5 (Centre)	17T 0547952mE 4801587mN
Location 2 (AiHc-501)	Surface Find 6 (Northeast)	17T 0547964mE 4801593mN
Location 2 (AiHc-501)	Surface Find 7	17T 0547951mE 4801569mN

Stage 1-2 Archaeological Assessment, Whistle Bare Campground, 1898 Whistle Bare Road, North
Dumfries

Site	Context	Position
Location 2 (AiHc-501)	Surface Find 8	17T 0547960mE 4801565mN
Location 2 (AiHc-501)	Surface Find 9 (Southwest)	17T 0547955mE 4801556mN
Location 3	Surface Find 43	17T 0548068mE 4801629mN
Location 3	Surface Find 44	17T 0548050mE 4801628mN
Location 3	Surface Find 46	17T 0548039mE 4801630mN
Location 3	Surface Find 47	17T 0548036mE 4801641mN
Location 3	Surface Find 48	17T 0548027mE 4801634mN
Location 4 (AiHc-503)	Test Pit 1	17T 0548098mE 4801264mN
Location 4 (AiHc-503)	Test Pit 2 (East)	17T 0548102mE 4801266mN
Location 4 (AiHc-503)	Test Pit 3	17T 0548100mE 4801256mN
Location 4 (AiHc-503)	Test Pit 4	17T 0548101mE 4801265mN
Location 4 (AiHc-503)	Test Pit 5	17T 0548097mE 4801264mN
Location 4 (AiHc-503)	Test Pit 6	17T 0548099mE 4801264mN
Location 4 (AiHc-503)	Test Pit 7	17T 0548097mE 4801261mN
Location 4 (AiHc-503)	Test Pit 8 (Centre)	17T 0548095mE 4801262mN
Location 4 (AiHc-503)	Test Pit 9	17T 0548092mE 4801266mN
Location 4 (AiHc-503)	Test Pit 10	17T 0548090mE 4801261mN
Location 4 (AiHc-503)	Test Pit 11 (North)	17T 0548089mE 4801268mN
Location 4 (AiHc-503)	Test Pit 12 (South)	17T 0548088mE 4801251mN
Location 4 (AiHc-503)	Test Pit 13	17T 0548086mE 4801266mN
Location 4 (AiHc-503)	Test Pit 14	17T 0548086mE 4801265mN
Location 4 (AiHc-503)	Test Pit 15 (West)	17T 0548086mE 4801258mN
Findspot 1	Surface Find 18	17T 0547875mE 4801425mN
Findspot 2	Surface Find 15	17T 0547842mE 4801579mN
Findspot 2	Surface Find 16	17T 0547826mE 4801592mN
Findspot 3 (AiHc-502)	Surface Find 40	17T 0548016mE 4801672mN
Findspot 4	Surface Find 41	17T 0548061mE 4801666mN
Findspot 4	Surface Find 42	17T 0548048mE 4801662mN
Landmark #1	Telephone Pole South side of Whistle Bare Road, Southeast of House at 1898 Whistle Bare Road	17T 0548130mE 4801242mN
Landmark #2	Telephone Pole South side of Whistle Bare Road, Southwest of House at 1898 Whistle Bare Road	17T 0548066mE 4801228mN